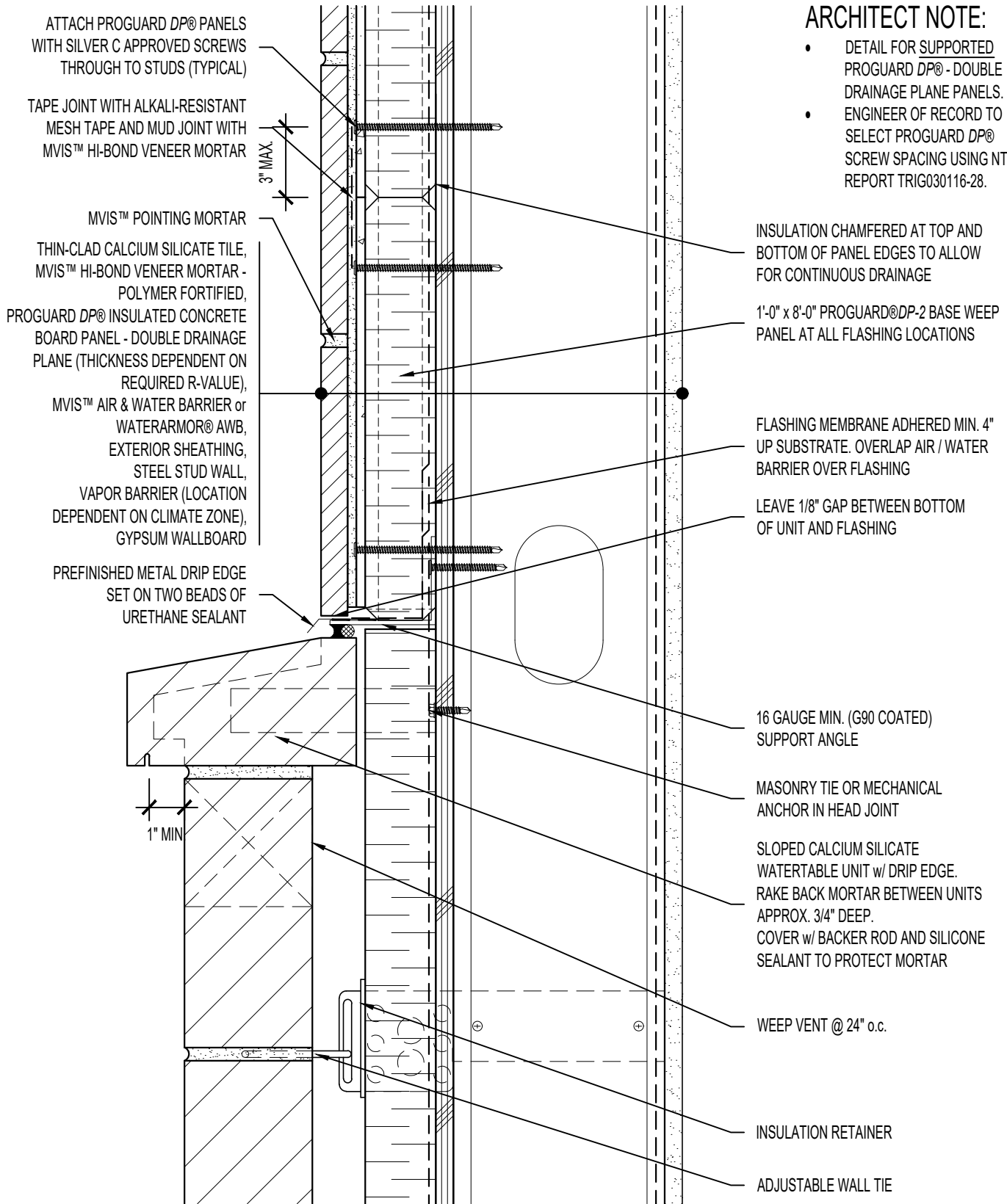


ARCHITECT NOTE:

- DETAIL FOR SUPPORTED PROGUARD DP® - DOUBLE DRAINAGE PLANE PANELS.
- ENGINEER OF RECORD TO SELECT PROGUARD DP® SCREW SPACING USING NTA REPORT TRIG030116-28.



ARRISCRAFT-CADD

TITLE: FULL-BED / THIN ADHERED
CALCIUM SILICATE TRANSITION
(SLOPED WATERTABLE)

DETAIL No:
SS08SAT - DP2S

U109

DATE DRAWN:
16 Jan 2021

SCALE:
3"=1'-0"

DRAWN BY:
TRI