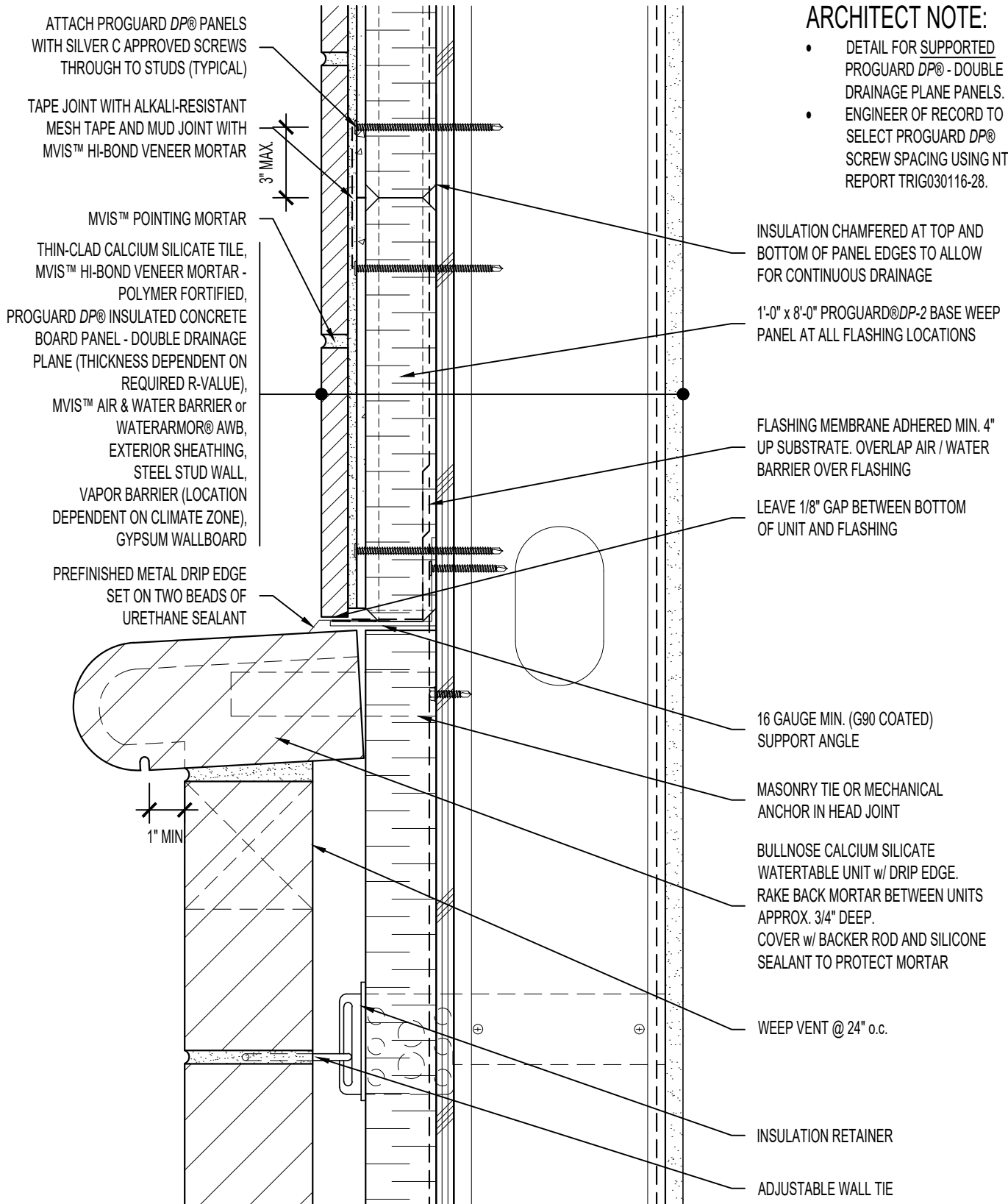


**ARCHITECT NOTE:**

- DETAIL FOR SUPPORTED PROGUARD DP® - DOUBLE DRAINAGE PLANE PANELS.
- ENGINEER OF RECORD TO SELECT PROGUARD DP® SCREW SPACING USING NTA REPORT TRIG030116-28.



ATTACH PROGUARD DP® PANELS WITH SILVER C APPROVED SCREWS THROUGH TO STUDS (TYPICAL)

TAPE JOINT WITH ALKALI-RESISTANT MESH TAPE AND MUD JOINT WITH MVIS™ HI-BOND VENEER MORTAR

3" MAX

MVIS™ POINTING MORTAR

THIN-CLAD CALCIUM SILICATE TILE, MVIS™ HI-BOND VENEER MORTAR - POLYMER FORTIFIED,

PROGUARD DP® INSULATED CONCRETE BOARD PANEL - DOUBLE DRAINAGE PLANE (THICKNESS DEPENDENT ON REQUIRED R-VALUE),

MVIS™ AIR & WATER BARRIER or WATERARMOR® AWB, EXTERIOR SHEATHING, STEEL STUD WALL, VAPOR BARRIER (LOCATION DEPENDENT ON CLIMATE ZONE), GYPSUM WALLBOARD

PREFINISHED METAL DRIP EDGE SET ON TWO BEADS OF URETHANE SEALANT

1" MIN

INSULATION CHAMFERED AT TOP AND BOTTOM OF PANEL EDGES TO ALLOW FOR CONTINUOUS DRAINAGE

1'-0" x 8'-0" PROGUARD® DP-2 BASE WEEP PANEL AT ALL FLASHING LOCATIONS

FLASHING MEMBRANE ADHERED MIN. 4" UP SUBSTRATE. OVERLAP AIR / WATER BARRIER OVER FLASHING

LEAVE 1/8" GAP BETWEEN BOTTOM OF UNIT AND FLASHING

16 GAUGE MIN. (G90 COATED) SUPPORT ANGLE

MASONRY TIE OR MECHANICAL ANCHOR IN HEAD JOINT

BULLNOSE CALCIUM SILICATE WATERTABLE UNIT w/ DRIP EDGE. RAKE BACK MORTAR BETWEEN UNITS APPROX. 3/4" DEEP. COVER w/ BACKER ROD AND SILICONE SEALANT TO PROTECT MORTAR

WEEP VENT @ 24" o.c.

INSULATION RETAINER

ADJUSTABLE WALL TIE



**ARRISCRAFT-CADD**

TITLE: FULL-BED / THIN ADHERED CALCIUM SILICATE TRANSITION (BULLNOSE WATERTABLE)

DETAIL No: SS08SAT - DP2S

**U108**

DATE DRAWN: 16 Jan 2021

SCALE: 3"=1'-0"

DRAWN BY: TRI