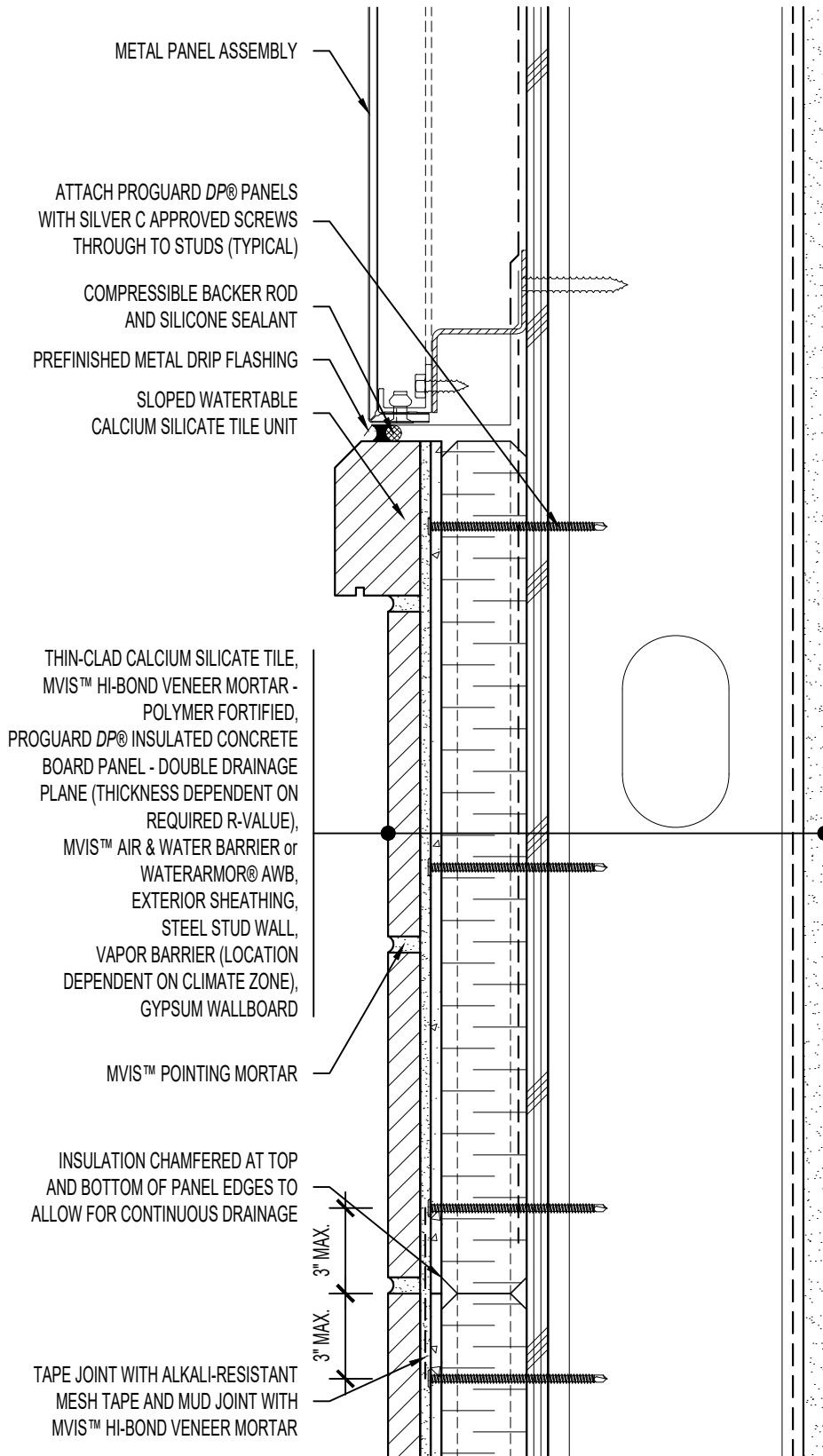


ARCHITECT NOTE:

- DETAIL FOR SUPPORTED PROGUARD DP® - DOUBLE DRAINAGE PLANE PANELS.
- ENGINEER OF RECORD TO SELECT PROGUARD DP® SCREW SPACING USING NTA REPORT TRIG030116-28.



METAL PANEL ASSEMBLY

ATTACH PROGUARD DP® PANELS WITH SILVER C APPROVED SCREWS THROUGH TO STUDS (TYPICAL)

COMPRESSIBLE BACKER ROD AND SILICONE SEALANT

PREFINISHED METAL DRIP FLASHING

SLOPED WATERTABLE CALCIUM SILICATE TILE UNIT

THIN-CLAD CALCIUM SILICATE TILE, MVIS™ HI-BOND VENEER MORTAR - POLYMER FORTIFIED, PROGUARD DP® INSULATED CONCRETE BOARD PANEL - DOUBLE DRAINAGE PLANE (THICKNESS DEPENDENT ON REQUIRED R-VALUE), MVIS™ AIR & WATER BARRIER or WATERARMOR® AWB, EXTERIOR SHEATHING, STEEL STUD WALL, VAPOR BARRIER (LOCATION DEPENDENT ON CLIMATE ZONE), GYPSUM WALLBOARD

MVIS™ POINTING MORTAR

INSULATION CHAMFERED AT TOP AND BOTTOM OF PANEL EDGES TO ALLOW FOR CONTINUOUS DRAINAGE

3" MAX.
3" MAX.

TAPE JOINT WITH ALKALI-RESISTANT MESH TAPE AND MUD JOINT WITH MVIS™ HI-BOND VENEER MORTAR



ARRISCRAFT-CADD

TITLE:
**METAL PANEL / CALCIUM SILICATE
TILE TRANSITION (SLOPED)**

DETAIL No:
SS08SAT - DP2S

U107

DATE DRAWN:
16 Jan 2021

SCALE:
3"=1'-0"

DRAWN BY:
TRI