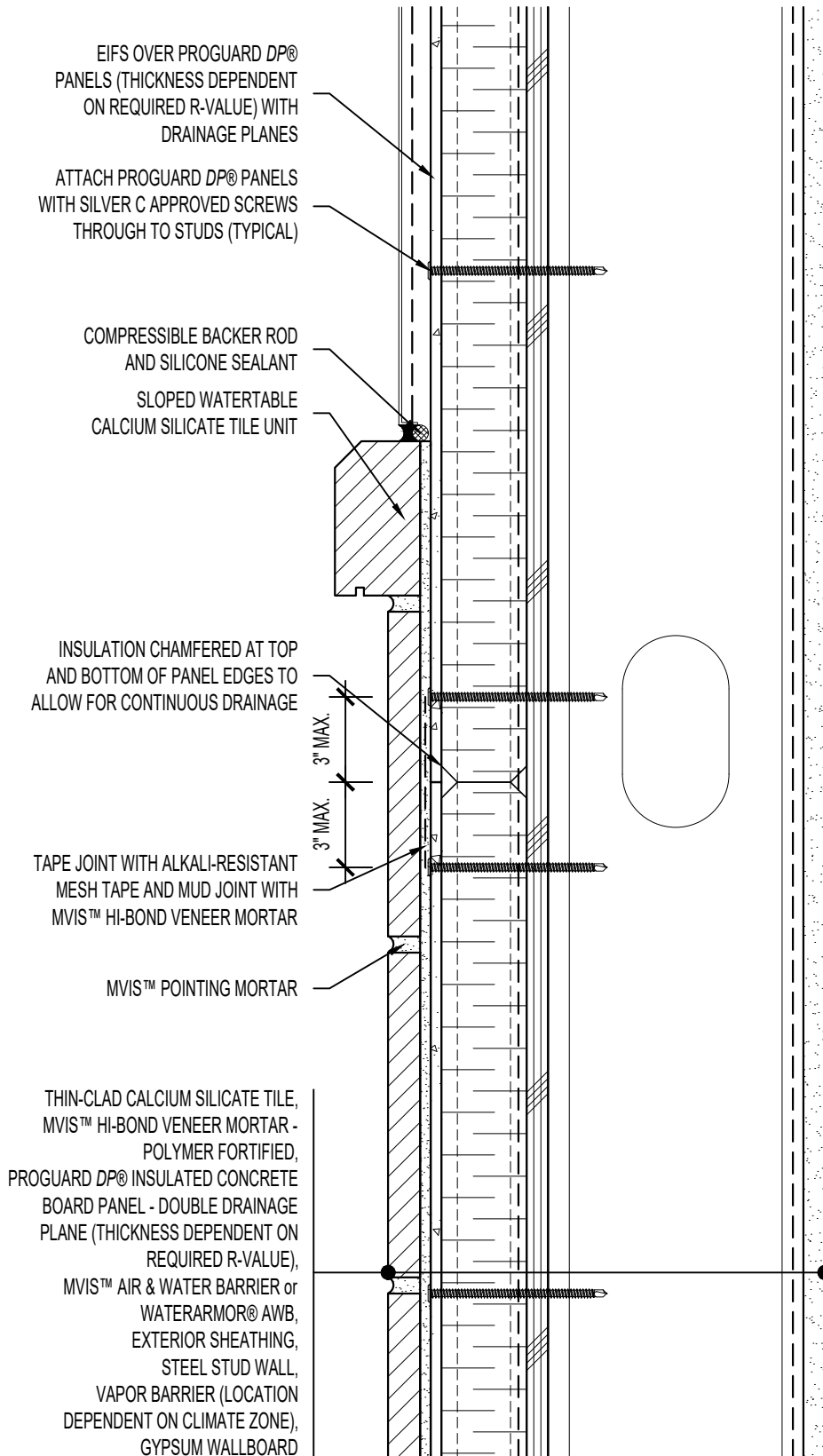


**ARCHITECT NOTE:**

- DETAIL FOR SUPPORTED PROGUARD DP® - DOUBLE DRAINAGE PLANE PANELS.
- ENGINEER OF RECORD TO SELECT PROGUARD DP® SCREW SPACING USING NTA REPORT TRIG030116-28.



EIFS OVER PROGUARD DP®  
PANELS (THICKNESS DEPENDENT  
ON REQUIRED R-VALUE) WITH  
DRAINAGE PLANES

ATTACH PROGUARD DP® PANELS  
WITH SILVER C APPROVED SCREWS  
THROUGH TO STUDS (TYPICAL)

COMPRESSIBLE BACKER ROD  
AND SILICONE SEALANT

SLOPED WATERTABLE  
CALCIUM SILICATE TILE UNIT

INSULATION CHAMFERED AT TOP  
AND BOTTOM OF PANEL EDGES TO  
ALLOW FOR CONTINUOUS DRAINAGE

3" MAX.  
3" MAX.

TAPE JOINT WITH ALKALI-RESISTANT  
MESH TAPE AND MUD JOINT WITH  
MVIS™ HI-BOND VENEER MORTAR

MVIS™ POINTING MORTAR

THIN-CLAD CALCIUM SILICATE TILE,  
MVIS™ HI-BOND VENEER MORTAR -  
POLYMER FORTIFIED,  
PROGUARD DP® INSULATED CONCRETE  
BOARD PANEL - DOUBLE DRAINAGE  
PLANE (THICKNESS DEPENDENT ON  
REQUIRED R-VALUE),  
MVIS™ AIR & WATER BARRIER or  
WATERARMOR® AWB,  
EXTERIOR SHEATHING,  
STEEL STUD WALL,  
VAPOR BARRIER (LOCATION  
DEPENDENT ON CLIMATE ZONE),  
GYPSUM WALLBOARD



**ARRISCRAFT-CADD**

TITLE: EIFS / CALCIUM SILICATE TILE  
TRANSITION (SLOPED) -  
CONTINUOUS PROGUARD DP®

DETAIL No:  
SS08SAT - DP2S

**U103**

|                            |                    |                  |
|----------------------------|--------------------|------------------|
| DATE DRAWN:<br>16 Jan 2021 | SCALE:<br>3"=1'-0" | DRAWN BY:<br>TRI |
|----------------------------|--------------------|------------------|