

NOTE: REFER TO

DOOR THRESHOLD: SS08SAT-DP2SU052
 DOOR JAMB: SS08SAT-DP2SU072
 MVIS™ POINTING MORTAR

THIN-CLAD CALCIUM SILICATE TILE,
 MVIS™ HI-BOND VENEER
 MORTAR - POLYMER FORTIFIED,
 PROGUARD DP® INSULATED CONCRETE
 BOARD PANEL - DOUBLE DRAINAGE
 PLANE (THICKNESS DEPENDENT ON
 REQUIRED R-VALUE),
 MVIS™ AIR & WATER BARRIER or
 WATERARMOR® AWB,
 EXTERIOR SHEATHING,
 STEEL STUD WALL,
 VAPOR BARRIER (LOCATION
 DEPENDENT ON CLIMATE ZONE),
 GYPSUM WALLBOARD

ATTACH PROGUARD DP® PANELS
 WITH SILVER C APPROVED SCREWS
 THROUGH TO STUDS (TYPICAL)

1/4" CONCRETE BOARD MECHANICALLY
 ATTACHED TO 16 GAUGE SUPPORT

COMPRESSIBLE BACKER ROD
 AND SILICONE SEALANT
 SILICONE COMPATIBLE
 WEEP VENTS @ 24" o.c.

16 GAUGE MIN. (G90 COATED)
 SUPPORT ANGLE

WATERPROOFING
 TRANSITION MATERIAL

COMPRESSIBLE BACKER ROD AND
 SILICONE SEALANT AROUND FRAME

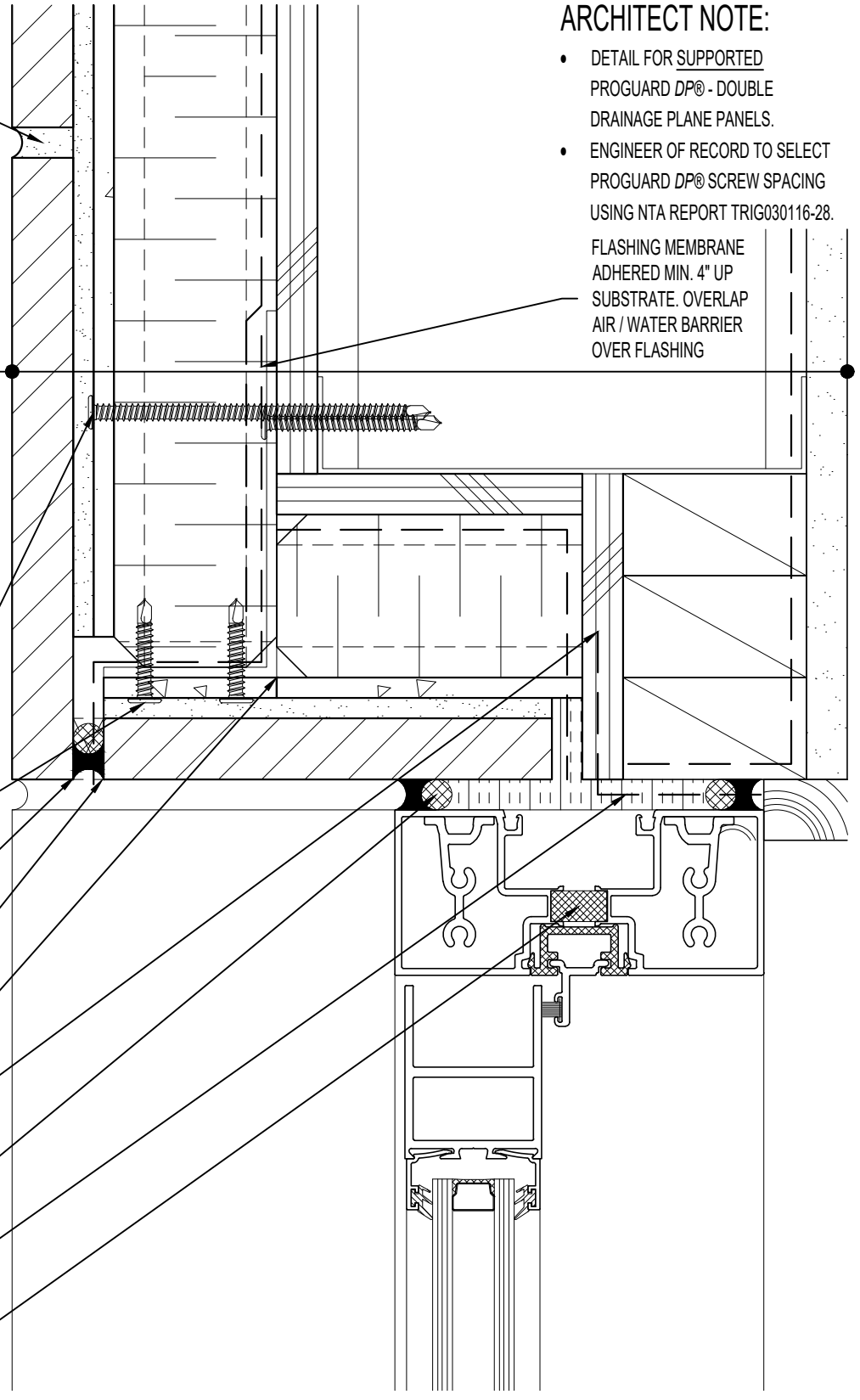
SPRAY APPLIED FOAM INSULATING
 AIR SEAL AROUND FRAME

PREMANUFACTURED
 THERMALLY BROKEN ALUMINUM
 WINDOW ASSEMBLY

ARCHITECT NOTE:

- DETAIL FOR SUPPORTED PROGUARD DP® - DOUBLE DRAINAGE PLANE PANELS.
- ENGINEER OF RECORD TO SELECT PROGUARD DP® SCREW SPACING USING NTA REPORT TRIG030116-28.

FLASHING MEMBRANE
 ADHERED MIN. 4" UP
 SUBSTRATE. OVERLAP
 AIR / WATER BARRIER
 OVER FLASHING



ARRISCRAFT-CADD

DETAIL No:
 SS08SAT - DP2S

TITLE:
 ALUMINUM DOOR HEAD -
 DEEP RECESSED DOOR

U062

DATE DRAWN: 02 Aug 2017	SCALE: 1-1/2"=1'-0"	DRAWN BY: TRI
----------------------------	------------------------	------------------