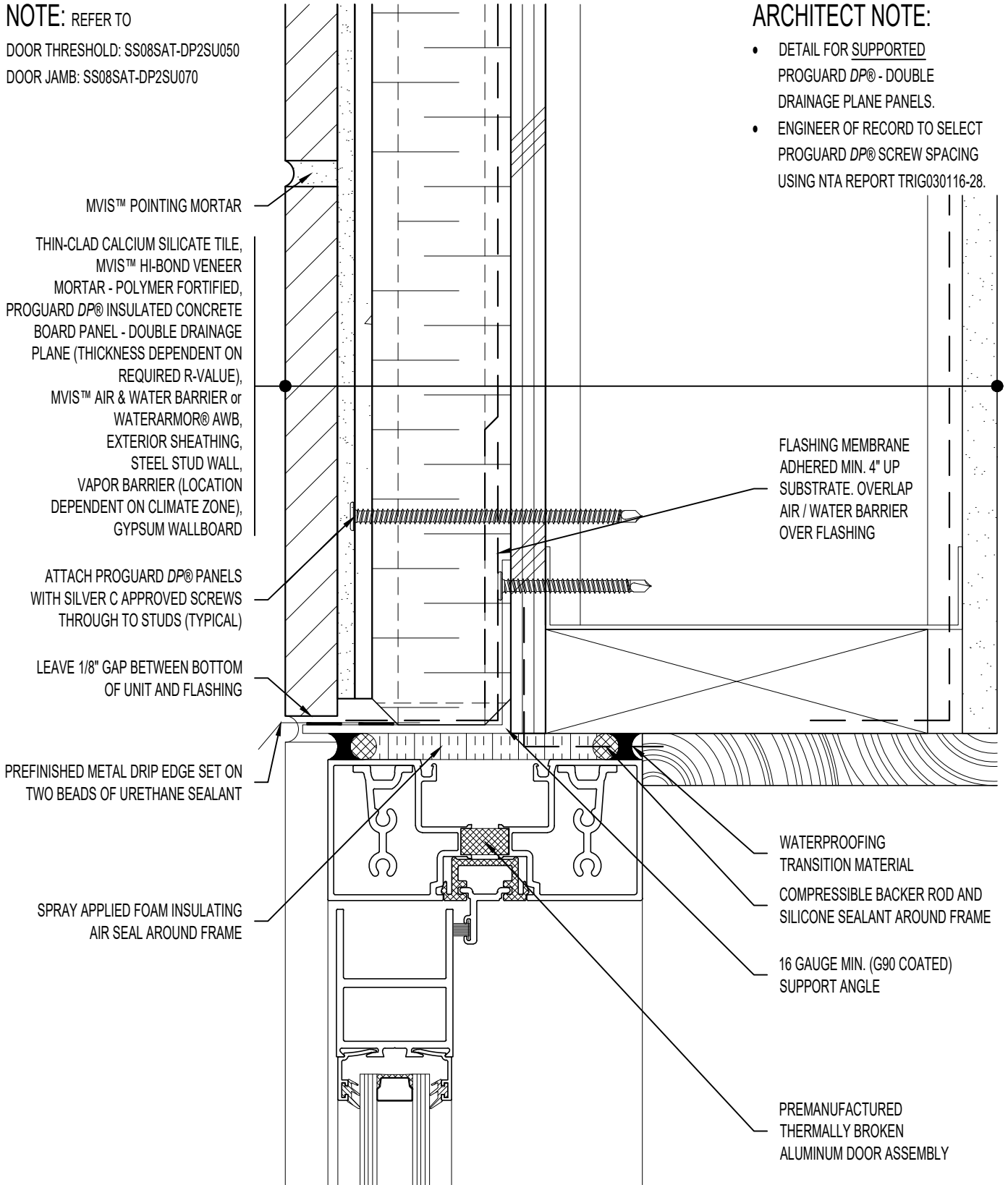


NOTE: REFER TO

DOOR THRESHOLD: SS08SAT-DP2SU050
 DOOR JAMB: SS08SAT-DP2SU070

ARCHITECT NOTE:

- DETAIL FOR SUPPORTED PROGUARD DP® - DOUBLE DRAINAGE PLANE PANELS.
- ENGINEER OF RECORD TO SELECT PROGUARD DP® SCREW SPACING USING NTA REPORT TRIG030116-28.



MVIS™ POINTING MORTAR

THIN-CLAD CALCIUM SILICATE TILE,
 MVIS™ HI-BOND VENEER
 MORTAR - POLYMER FORTIFIED,
 PROGUARD DP® INSULATED CONCRETE
 BOARD PANEL - DOUBLE DRAINAGE
 PLANE (THICKNESS DEPENDENT ON
 REQUIRED R-VALUE),
 MVIS™ AIR & WATER BARRIER or
 WATERARMOR® AWB,
 EXTERIOR SHEATHING,
 STEEL STUD WALL,
 VAPOR BARRIER (LOCATION
 DEPENDENT ON CLIMATE ZONE),
 GYPSUM WALLBOARD

ATTACH PROGUARD DP® PANELS
 WITH SILVER C APPROVED SCREWS
 THROUGH TO STUDS (TYPICAL)

LEAVE 1/8" GAP BETWEEN BOTTOM
 OF UNIT AND FLASHING

PREFINISHED METAL DRIP EDGE SET ON
 TWO BEADS OF URETHANE SEALANT

SPRAY APPLIED FOAM INSULATING
 AIR SEAL AROUND FRAME

FLASHING MEMBRANE
 ADHERED MIN. 4" UP
 SUBSTRATE. OVERLAP
 AIR / WATER BARRIER
 OVER FLASHING

WATERPROOFING
 TRANSITION MATERIAL
 COMPRESSIBLE BACKER ROD AND
 SILICONE SEALANT AROUND FRAME

16 GAUGE MIN. (G90 COATED)
 SUPPORT ANGLE

PREMANUFACTURED
 THERMALLY BROKEN
 ALUMINUM DOOR ASSEMBLY



ARRISCRAFT-CADD

DETAIL No:
 SS08SAT - DP2S

TITLE:
 ALUMINUM DOOR HEAD

U060

DATE DRAWN: 02 Aug 2017
 SCALE: 1-1/2"=1'-0"
 DRAWN BY: TRI