

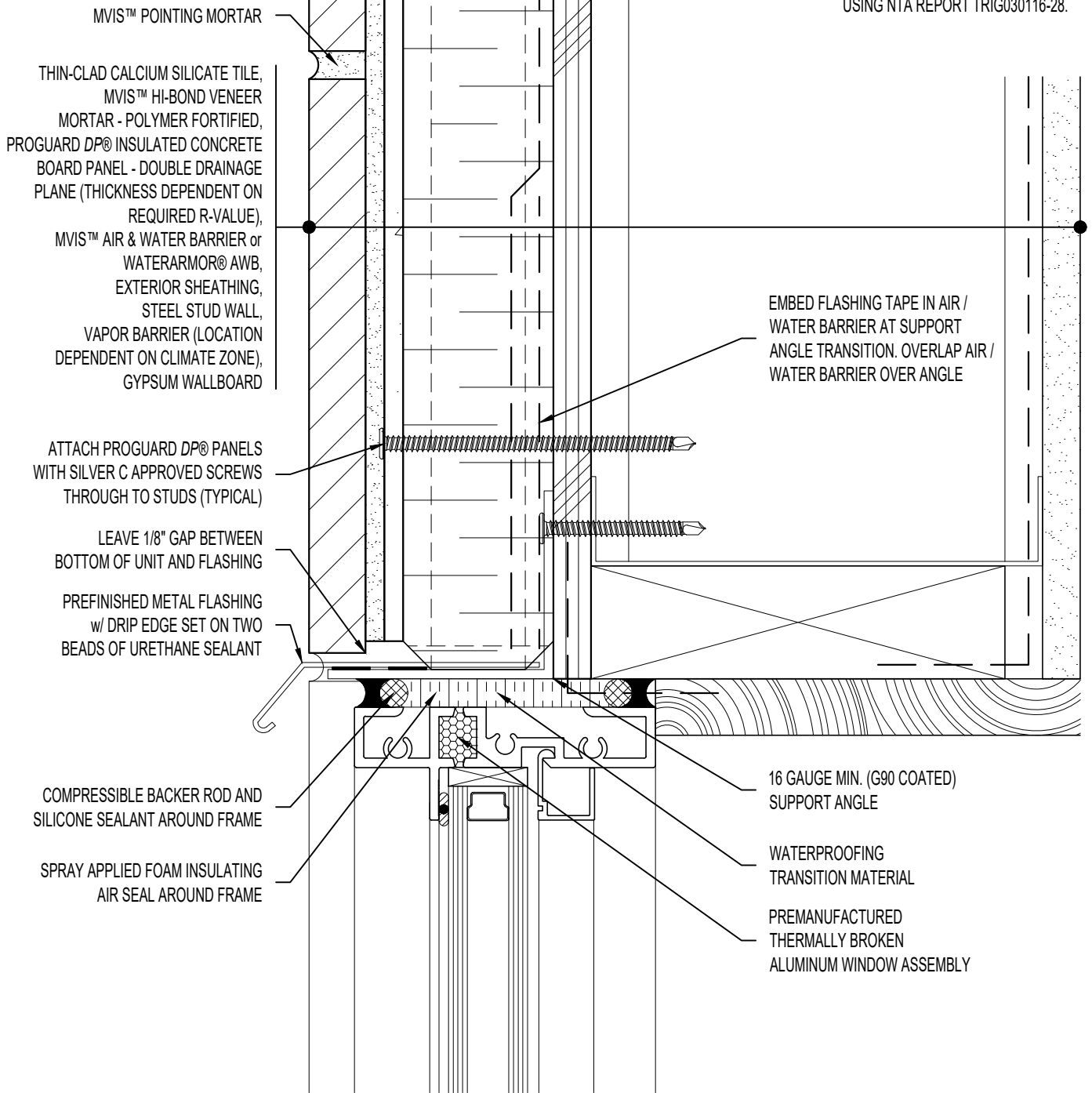
NOTE: REFER TO

WINDOW SILL: SS08SAT-DP2SU020-22

WINDOW JAMB: SS08SAT-DP2SU040-41

ARCHITECT NOTE:

- DETAIL FOR SUPPORTED PROGUARD DP® - DOUBLE DRAINAGE PLANE PANELS.
- ENGINEER OF RECORD TO SELECT PROGUARD DP® SCREW SPACING USING NTA REPORT TRIG030116-28.



MVIS™ POINTING MORTAR

THIN-CLAD CALCIUM SILICATE TILE,
 MVIS™ HI-BOND VENEER
 MORTAR - POLYMER FORTIFIED,
 PROGUARD DP® INSULATED CONCRETE
 BOARD PANEL - DOUBLE DRAINAGE
 PLANE (THICKNESS DEPENDENT ON
 REQUIRED R-VALUE),
 MVIS™ AIR & WATER BARRIER or
 WATERARMOR® AWB,
 EXTERIOR SHEATHING,
 STEEL STUD WALL,
 VAPOR BARRIER (LOCATION
 DEPENDENT ON CLIMATE ZONE),
 GYPSUM WALLBOARD

ATTACH PROGUARD DP® PANELS
 WITH SILVER C APPROVED SCREWS
 THROUGH TO STUDS (TYPICAL)

LEAVE 1/8" GAP BETWEEN
 BOTTOM OF UNIT AND FLASHING

PREFINISHED METAL FLASHING
 w/ DRIP EDGE SET ON TWO
 BEADS OF URETHANE SEALANT

COMPRESSIBLE BACKER ROD AND
 SILICONE SEALANT AROUND FRAME

SPRAY APPLIED FOAM INSULATING
 AIR SEAL AROUND FRAME

EMBED FLASHING TAPE IN AIR /
 WATER BARRIER AT SUPPORT
 ANGLE TRANSITION. OVERLAP AIR /
 WATER BARRIER OVER ANGLE

16 GAUGE MIN. (G90 COATED)
 SUPPORT ANGLE

WATERPROOFING
 TRANSITION MATERIAL

PREMANUFACTURED
 THERMALLY BROKEN
 ALUMINUM WINDOW ASSEMBLY



ARRISCRAFT-CADD

DETAIL No:
 SS08SAT - DP2S

TITLE:
 ALUMINUM WINDOW HEAD

U030

DATE DRAWN: 02 Aug 2017
 SCALE: 1-1/2"=1'-0"
 DRAWN BY: TRI