

NOTE: REFER TO

WINDOW HEAD: SS08SAT-DP2SU032
 WINDOW JAMB: SS08SAT-DP2SU045

ARCHITECT NOTE:

- DETAIL FOR SUPPORTED PROGUARD DP® - DOUBLE DRAINAGE PLANE PANELS.
- ENGINEER OF RECORD TO SELECT PROGUARD DP® SCREW SPACING USING NTA REPORT TRIG030116-28.

COMPRESSIBLE BACKER ROD AND SILICONE SEALANT AROUND FRAME

PREMANUFACTURED THERMALLY BROKEN ALUMINUM WINDOW ASSEMBLY

SPRAY APPLIED FOAM INSULATING AIR SEAL AROUND FRAME

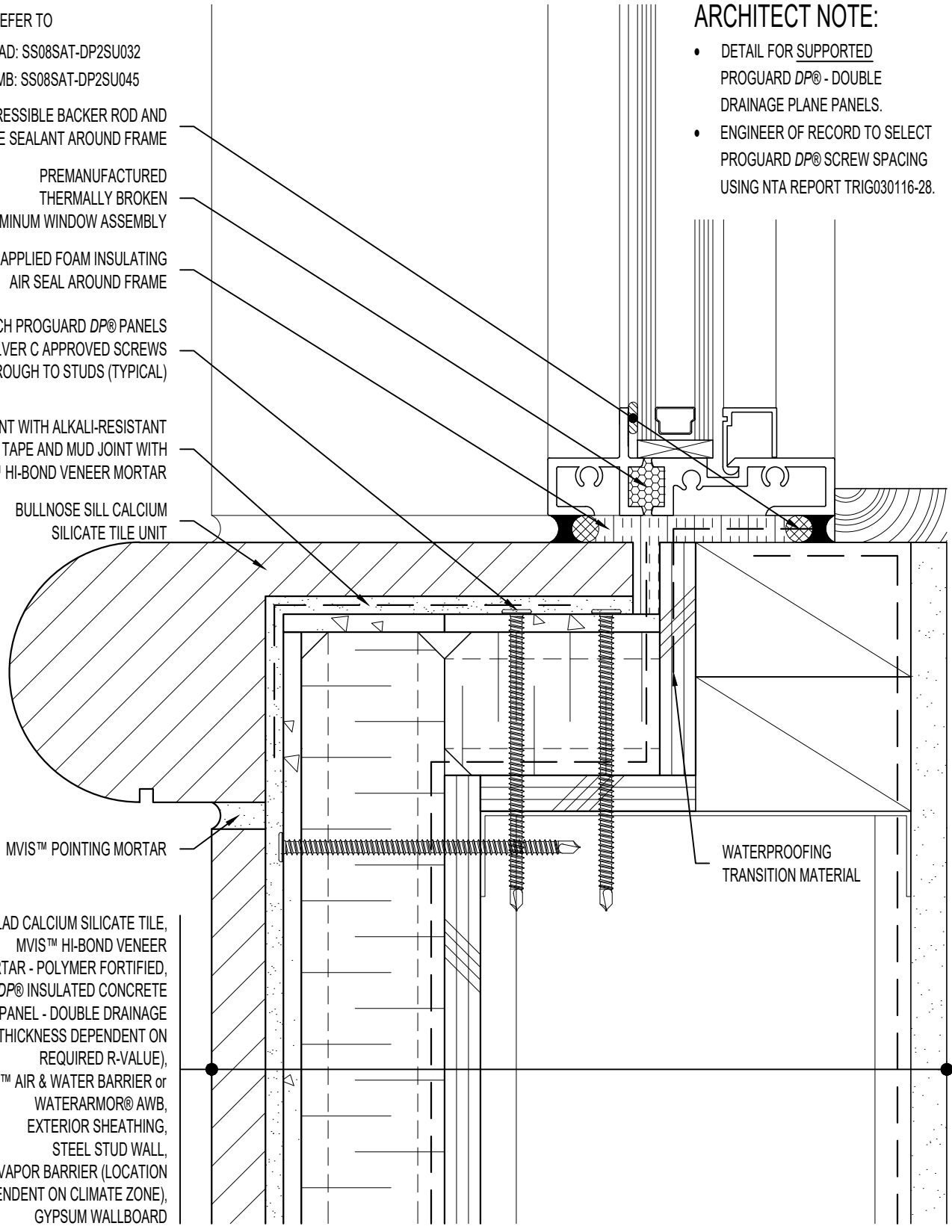
ATTACH PROGUARD DP® PANELS WITH SILVER C APPROVED SCREWS THROUGH TO STUDS (TYPICAL)

TAPE JOINT WITH ALKALI-RESISTANT MESH TAPE AND MUD JOINT WITH MVIS™ HI-BOND VENEER MORTAR

BULLNOSE SILL CALCIUM SILICATE TILE UNIT

MVIS™ POINTING MORTAR

THIN-CLAD CALCIUM SILICATE TILE, MVIS™ HI-BOND VENEER MORTAR - POLYMER FORTIFIED, PROGUARD DP® INSULATED CONCRETE BOARD PANEL - DOUBLE DRAINAGE PLANE (THICKNESS DEPENDENT ON REQUIRED R-VALUE), MVIS™ AIR & WATER BARRIER or WATERARMOR® AWB, EXTERIOR SHEATHING, STEEL STUD WALL, VAPOR BARRIER (LOCATION DEPENDENT ON CLIMATE ZONE), GYPSUM WALLBOARD



WATERPROOFING TRANSITION MATERIAL



ARRISCRAFT-CADD

DETAIL No:
 SS08SAT - DP2S

TITLE:
 BULLNOSE WINDOW SILL -
 DEEP RECESSED WINDOW

U027

DATE DRAWN: 02 Aug 2017 SCALE: 1-1/2"=1'-0" DRAWN BY: TRI