

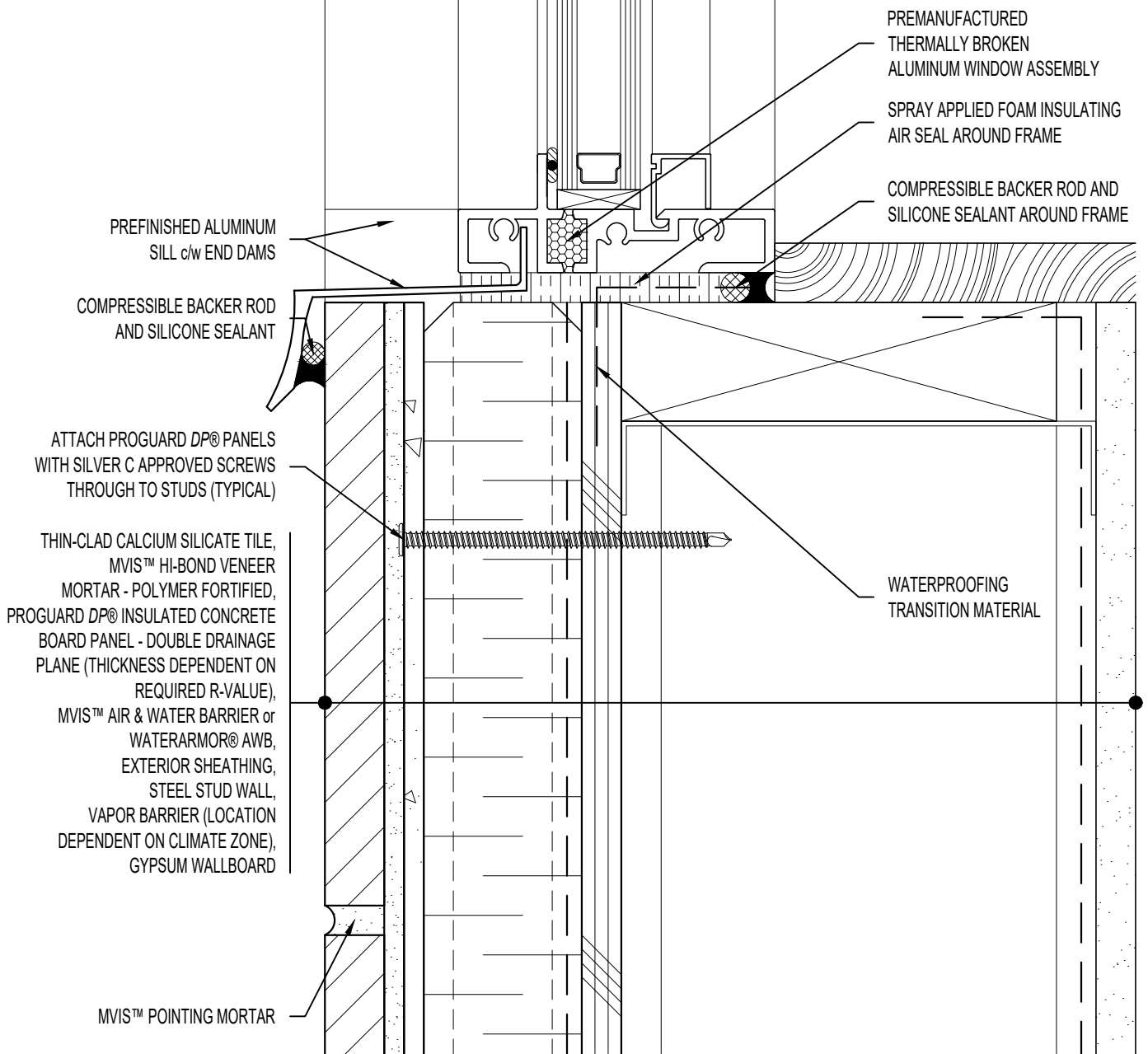
**NOTE:** REFER TO

WINDOW HEAD: SS08SAT-DP2SU031

WINDOW JAMB: SS08SAT-DP2SU042

**ARCHITECT NOTE:**

- DETAIL FOR SUPPORTED PROGUARD DP® - DOUBLE DRAINAGE PLANE PANELS.
- ENGINEER OF RECORD TO SELECT PROGUARD DP® SCREW SPACING USING NTA REPORT TRIG030116-28.



PREFINISHED ALUMINUM SILL c/w END DAMS

COMPRESSIBLE BACKER ROD AND SILICONE SEALANT

ATTACH PROGUARD DP® PANELS WITH SILVER C APPROVED SCREWS THROUGH TO STUDS (TYPICAL)

THIN-CLAD CALCIUM SILICATE TILE, MVIS™ HI-BOND VENEER MORTAR - POLYMER FORTIFIED, PROGUARD DP® INSULATED CONCRETE BOARD PANEL - DOUBLE DRAINAGE PLANE (THICKNESS DEPENDENT ON REQUIRED R-VALUE), MVIS™ AIR & WATER BARRIER or WATERARMOR® AWB, EXTERIOR SHEATHING, STEEL STUD WALL, VAPOR BARRIER (LOCATION DEPENDENT ON CLIMATE ZONE), GYPSUM WALLBOARD

MVIS™ POINTING MORTAR

PREMANUFACTURED THERMALLY BROKEN ALUMINUM WINDOW ASSEMBLY

SPRAY APPLIED FOAM INSULATING AIR SEAL AROUND FRAME

COMPRESSIBLE BACKER ROD AND SILICONE SEALANT AROUND FRAME

WATERPROOFING TRANSITION MATERIAL



**ARRISCRAFT-CADD**

DETAIL No:  
SS08SAT - DPSU

TITLE:  
ALUMINUM WINDOW SILL -  
RECESSED WINDOW

**U023**

DATE DRAWN:  
16 Jan 2021

SCALE:  
1-1/2"=1'-0"

DRAWN BY:  
TRI