

NOTE: REFER TO

WINDOW HEAD: SS08SAT-DP2SU030
 WINDOW JAMB: SS08SAT-DP2SU041

ARCHITECT NOTE:

- DETAIL FOR SUPPORTED PROGUARD DP® - DOUBLE DRAINAGE PLANE PANELS.
 - ENGINEER OF RECORD TO SELECT PROGUARD DP® SCREW SPACING USING NTA REPORT TRIG030116-28.
- PREMANUFACTURED THERMALLY BROKEN ALUMINUM WINDOW ASSEMBLY
- SPRAY APPLIED FOAM INSULATING AIR SEAL AROUND FRAME
- 16 GAUGE MIN. (G90 COATED) WINDOW SUPPORT ANGLE
- COMPRESSIBLE BACKER ROD AND SILICONE SEALANT AROUND FRAME

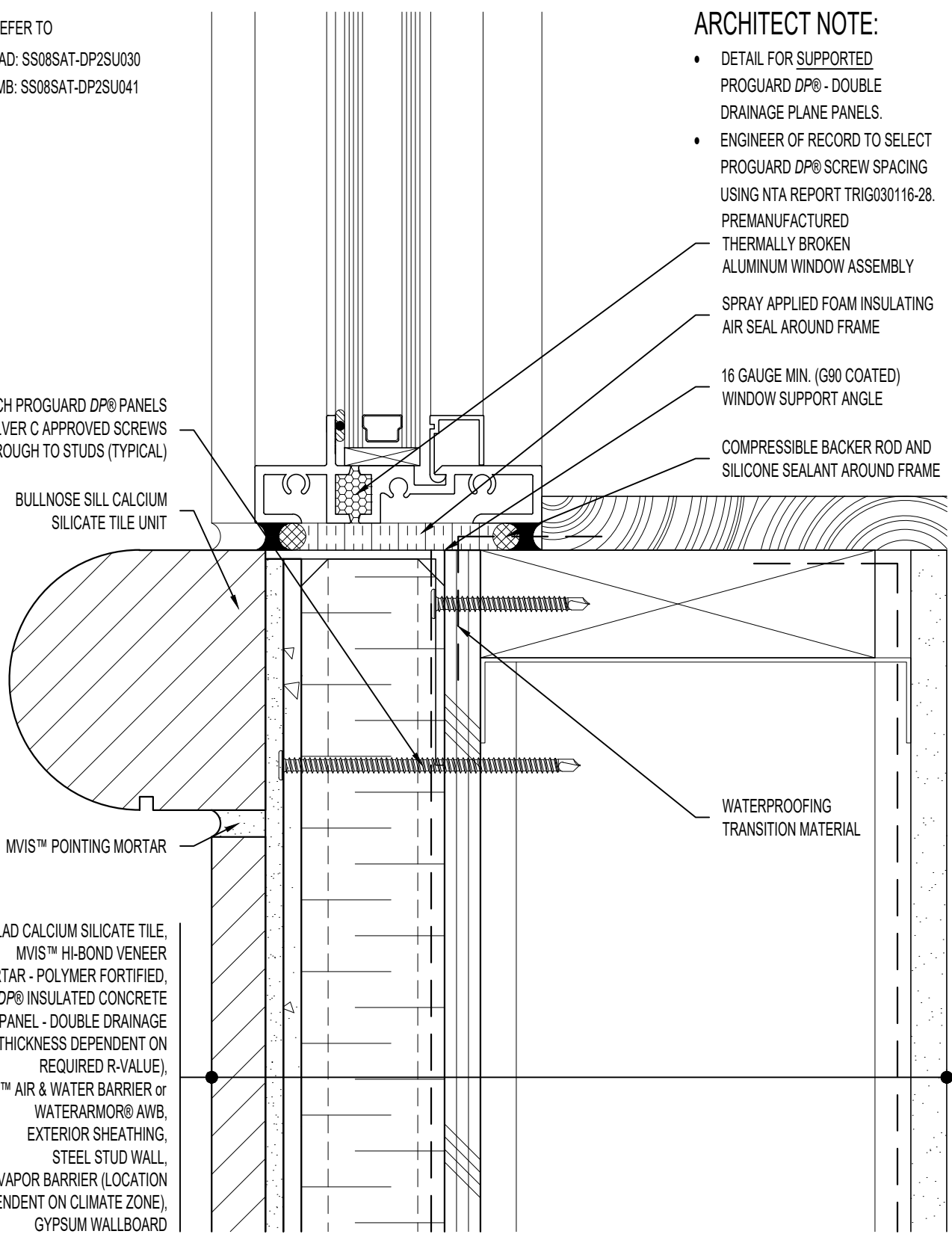
ATTACH PROGUARD DP® PANELS WITH SILVER C APPROVED SCREWS THROUGH TO STUDS (TYPICAL)

BULLNOSE SILL CALCIUM SILICATE TILE UNIT

MVIS™ POINTING MORTAR

THIN-CLAD CALCIUM SILICATE TILE, MVIS™ HI-BOND VENEER
 MORTAR - POLYMER FORTIFIED,
 PROGUARD DP® INSULATED CONCRETE BOARD PANEL - DOUBLE DRAINAGE PLANE (THICKNESS DEPENDENT ON REQUIRED R-VALUE),
 MVIS™ AIR & WATER BARRIER or WATERARMOR® AWB,
 EXTERIOR SHEATHING,
 STEEL STUD WALL,
 VAPOR BARRIER (LOCATION DEPENDENT ON CLIMATE ZONE),
 GYPSUM WALLBOARD

WATERPROOFING TRANSITION MATERIAL



ARRISCRAFT-CADD

DETAIL No:
 SS08SAT - DP2S

TITLE:
 BULLNOSE WINDOW SILL

U021

DATE DRAWN: 16 Jan 2021
 SCALE: 1-1/2"=1'-0"
 DRAWN BY: TRI