

THIN-CLAD CALCIUM SILICATE TILE,  
 MVIS™ HI-BOND VENEER MORTAR -  
 POLYMER FORTIFIED,  
 PROGUARD DP® INSULATED CONCRETE  
 BOARD PANEL - DOUBLE DRAINAGE  
 PLANE (THICKNESS DEPENDENT ON  
 REQUIRED R-VALUE),  
 MVIS™ AIR & WATER BARRIER or  
 WATERARMOR® AWB,  
 EXTERIOR SHEATHING,  
 STEEL STUD WALL,  
 VAPOR BARRIER (LOCATION  
 DEPENDENT ON CLIMATE ZONE),  
 GYPSUM WALLBOARD

**ARCHITECT NOTE:**

- DETAIL FOR SUPPORTED PROGUARD DP® - DOUBLE DRAINAGE PLANE PANELS.
- ENGINEER OF RECORD TO SELECT PROGUARD DP® SCREW SPACING USING NTA REPORT TRIG030116-28.

INSULATION CHAMFERED AT TOP AND BOTTOM OF PANEL EDGES TO ALLOW FOR CONTINUOUS DRAINAGE

1'-0" x 8'-0" PROGUARD DP® BASE WEEP PANEL - DOUBLE DRAINAGE PLANE AT ALL FLASHING LOCATIONS

EMBED FLASHING TAPE IN AIR / WATER BARRIER AT METAL FLASHING TRANSITION. OVERLAP AIR / WATER BARRIER OVER FLASHING

METAL FLASHING ATTACHED MIN. 4" UP SUBSTRATE WITH 1-1/2" SILVER C APPROVED SCREWS (ONE HIGH, ONE LOW) THROUGH TO STUDS

ATTACH PROGUARD DP® PANELS WITH SILVER C APPROVED SCREWS THROUGH TO STUDS (TYPICAL)

3" MAX.  
 3" MAX.

TAPE JOINT WITH ALKALI-RESISTANT MESH TAPE AND MUD JOINT WITH MVIS™ HI-BOND VENEER MORTAR

POINTING MORTAR

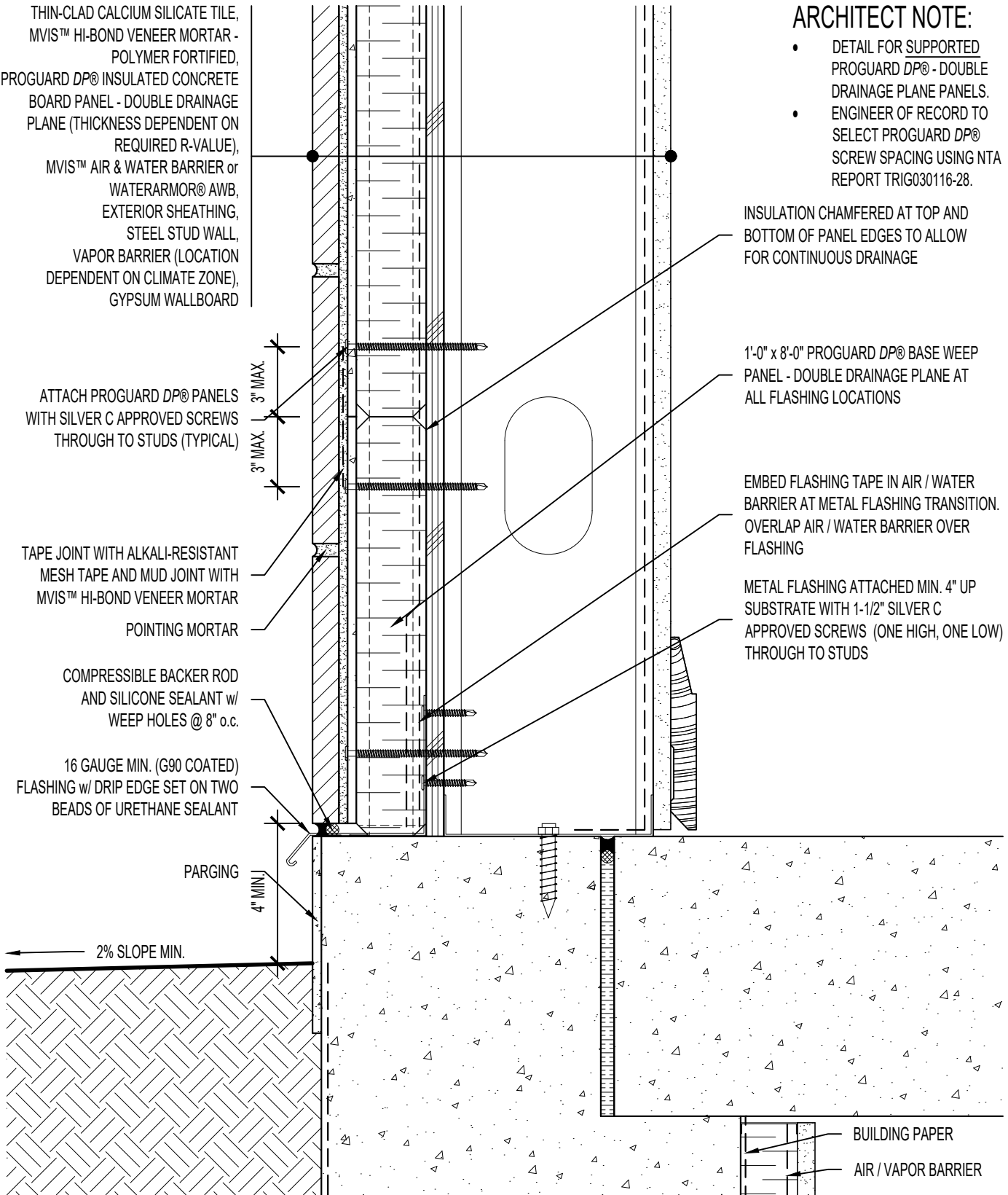
COMPRESSIBLE BACKER ROD AND SILICONE SEALANT w/ WEEP HOLES @ 8" o.c.

16 GAUGE MIN. (G90 COATED) FLASHING w/ DRIP EDGE SET ON TWO BEADS OF URETHANE SEALANT

PARGING

4" MIN.

2% SLOPE MIN.



BUILDING PAPER  
 AIR / VAPOR BARRIER



**ARRISCRAFT-CADD**

DETAIL No:  
 SS08SAT - DP2S

TITLE:  
 FOUNDATION TO WALL  
 JUNCTION WITH SOIL

**U000**

DATE DRAWN: 02 Aug 2017  
 SCALE: 3"=1'-0"  
 DRAWN BY: TRI