

GYPSUM WALLBOARD,
 STEEL STUD WALL,
 STEEL STUD FURRING,
 EXTERIOR SHEATHING,
 AIR/VAPOR BARRIER MEMBRANE,
 16 GAUGE Z-CHANNEL,
 RIGID OR SEMI RIGID INSULATION
 (THICKNESS DEPENDANT ON
 REQUIRED R-VALUE),
 ALUMINUM CHANNELS,
 1" AIR SPACE,
 CALCIUM SILICATE CLIP UNIT

 REQUIRED SHIM TO SEPARATE
 ALUMINUM CHANNEL FROM
 Z-CHANNEL, MAX. SHIMS 3/4" THICK

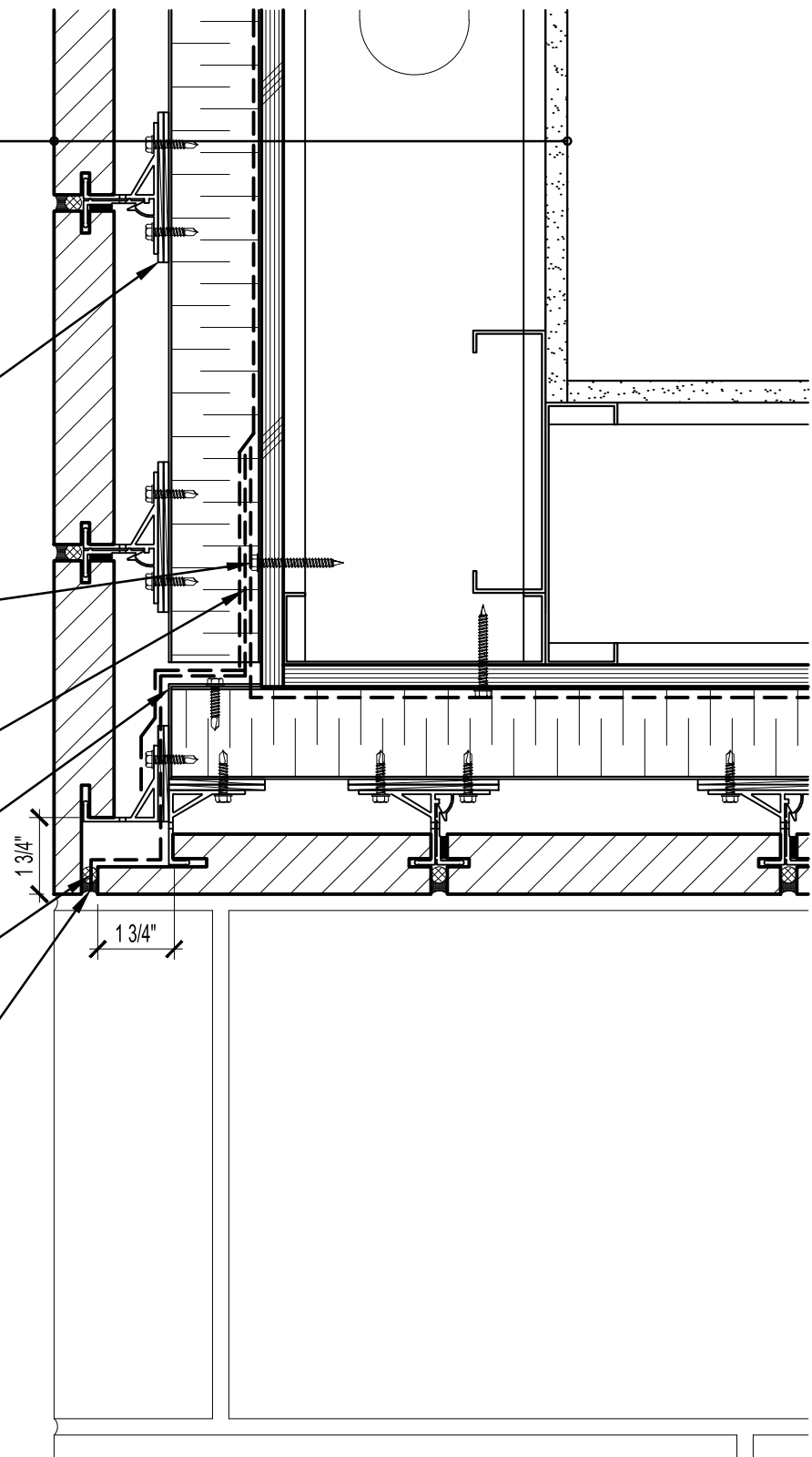
 Z-CHANNEL FASTENERS @ 16" O.C.
 C/W SHIMS AS REQUIRED, MAX.
 SHIMS 3/4" THICK

 FLASHING MEMBRANE
 ADHERED TO SUBSTRATE

 SHEET METAL ANGLE ATTACHED
 TO SOFFIT "Z" CHANNELS (ALL
 SAME GAUGE)

 COMPRESSIBLE BACKER
 ROD AND SEALANT

 UNOBSTRUCTED
 WEEP SYSTEM @ 24" O/C



ARRISCRAFT
 INTERNATIONAL
 BUILDING STONE • BRICK • LIMESTONE

ARRISCRAFT • CADD

TITLE:

SOFFIT RETURN

DATE DRAWN:
01/15/12

SCALE:
3"=1'-0"

DRAWN BY:
D.D.N.

DETAIL No:

SS 08SU

AC160