

GYPSUM WALLBOARD,
 STEEL STUD WALL,
 STEEL STUD FURRING,
 EXTERIOR SHEATHING,
 AIR/VAPOR BARRIER MEMBRANE,
 16 GAUGE Z-CHANNEL,
 RIGID OR SEMI RIGID INSULATION
 (THICKNESS DEPENDANT ON
 REQUIRED R-VALUE),
 ALUMINUM CHANNELS,
 1" AIR SPACE,
 CALCIUM SILICATE CLIP UNIT

REQUIRED SHIM TO SEPARATE
 ALUMINUM CHANNEL FROM
 Z-CHANNEL, MAX. SHIMS 3/4" THICK

BACKER ROD AND SEALANT

Z-CHANNEL FASTENERS
 @ 16" O.C. C/W SHIMS AS
 REQUIRED, MAX. SHIMS
 3/4" THICK

FLASHING MEMBRANE
 ADHERED TO SUBSTRATE

SHEET METAL ANGLE ATTACHED
 TO SOFFIT "Z" CHANNELS (ALL
 SAME GAUGE)

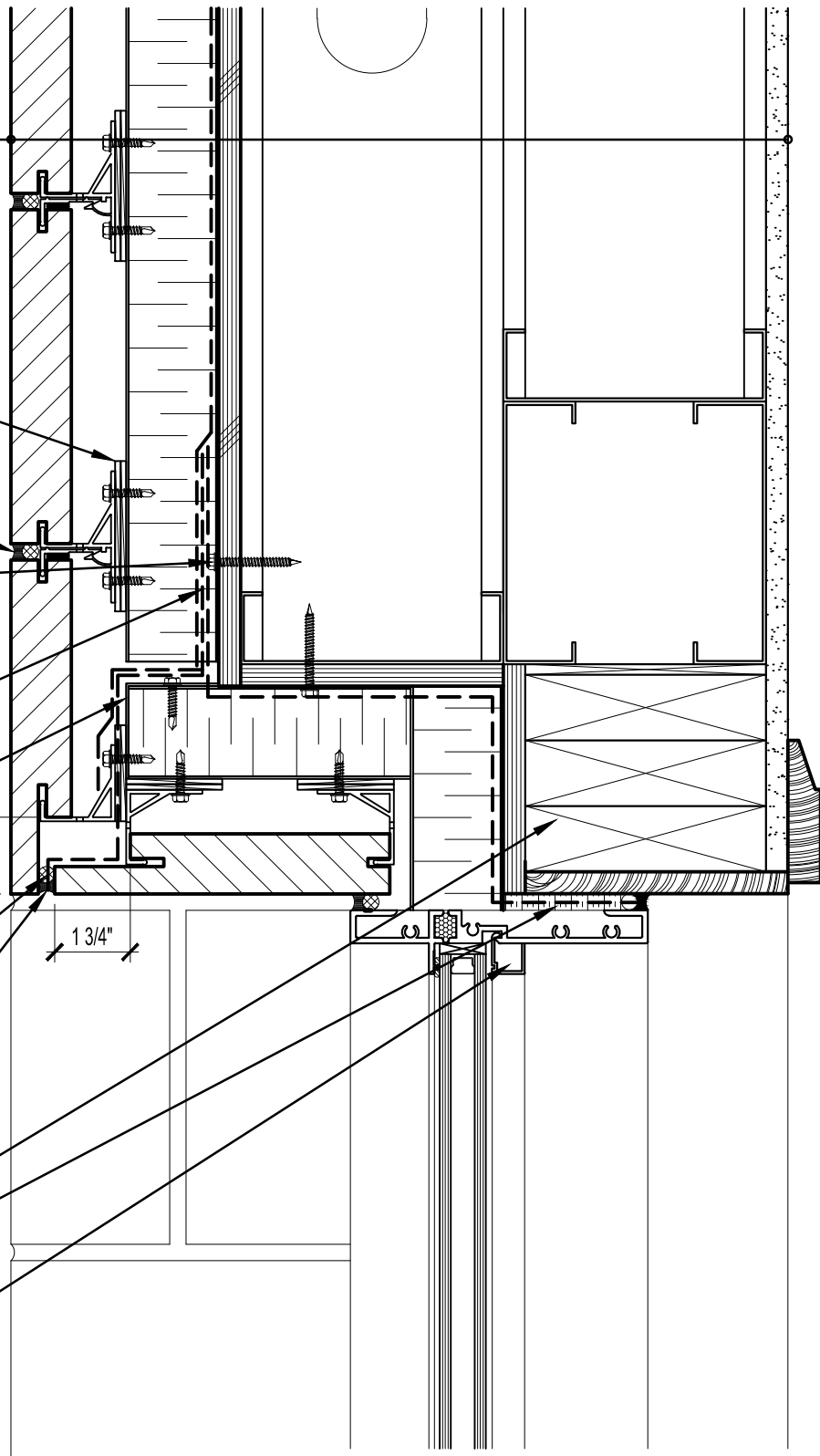
1 3/4"
 1 3/4"

COMPRESSIBLE BACKER
 ROD AND SEALANT

UNOBSTRUCTED
 WEEP SYSTEM @ 24" O/C

WOOD BLOCKING
 SPRAY APPLIED FOAM INSULATING
 AIR SEAL ALL AROUND FRAME

PREMANUFACTURED
 THERMALLY BROKEN ALUMINUM
 WINDOW ASSEMBLY



ARRISCRAFT
 INTERNATIONAL
 BUILDING STONE • BRICK • LIMESTONE

ARRISCRAFT • CADD

TITLE:

OPTIONAL RECESSED
 ALUMINUM WINDOW HEAD

DATE DRAWN:
 01/15/12

SCALE:
 3"=1'-0"

DRAWN BY:
 D.D.N.

DETAIL No:
 SS 08SU

AC033