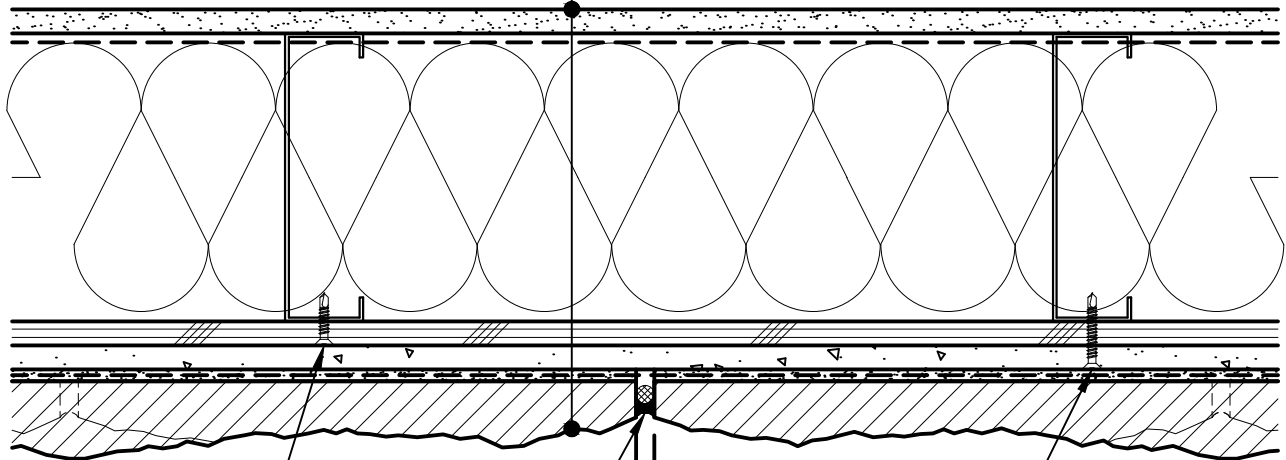


GYPSUM WALLBOARD,
 VAPOR BARRIER (LOCATION
 DEPENDENT ON CLIMATE ZONE),
 STEEL STUD WALL,
 BATT INSULATION (THICKNESS
 DEPENDENT ON REQUIRED R-VALUE),
 EXTERIOR SHEATHING,
 CEMENT BOARD,
 LATICRETE AIR & WATER BARRIER,
 HI-BOND MASONRY VENEER MORTAR -
 POLYMER FORTIFIED,
 CALCIUM SILICATE TILE UNIT




ATTACH SHEATHING WITH
 APPROVED SCREWS
 (TYPICAL @ EVERY STUD)

MOVEMENT JOINT SEALED
 WITH SILICONE SEALANT
 AND BACKER ROD

$\frac{3}{8}$ " MIN.

ATTACH CEMENT BOARD
 WITH APPROVED SCREWS
 (TYPICAL @ EVERY STUD)

			ARRISCRAFT-CADD		DETAIL No: SS08RAT
DATE DRAWN: 03/02/15			TITLE: VERTICAL EXPANSION JOINT DETAIL		U141
SCALE: 3"=1'-0"			DRAWN BY: TRI		