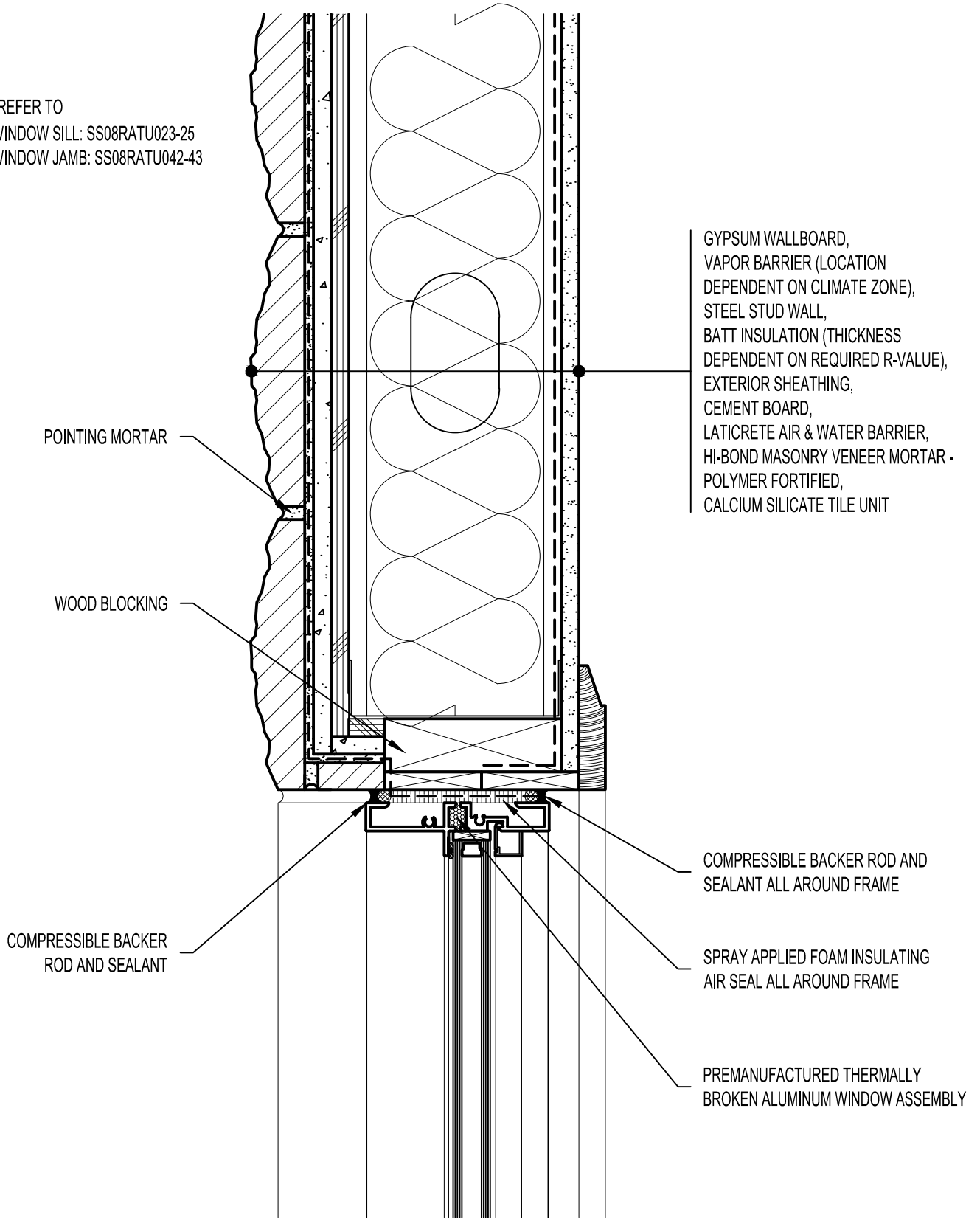


REFER TO  
 WINDOW SILL: SS08RATU023-25  
 WINDOW JAMB: SS08RATU042-43



GYPSUM WALLBOARD,  
 VAPOR BARRIER (LOCATION  
 DEPENDENT ON CLIMATE ZONE),  
 STEEL STUD WALL,  
 BATT INSULATION (THICKNESS  
 DEPENDENT ON REQUIRED R-VALUE),  
 EXTERIOR SHEATHING,  
 CEMENT BOARD,  
 LATICRETE AIR & WATER BARRIER,  
 HI-BOND MASONRY VENEER MORTAR -  
 POLYMER FORTIFIED,  
 CALCIUM SILICATE TILE UNIT

POINTING MORTAR

WOOD BLOCKING

COMPRESSIBLE BACKER  
 ROD AND SEALANT

COMPRESSIBLE BACKER ROD AND  
 SEALANT ALL AROUND FRAME

SPRAY APPLIED FOAM INSULATING  
 AIR SEAL ALL AROUND FRAME

PREMANUFACTURED THERMALLY  
 BROKEN ALUMINUM WINDOW ASSEMBLY

**Arriscraft**  
 Building Stone · Brick · Limestone

**ARRISCRAFT-CADD**

DETAIL No:  
 SS08RAT

TITLE:  
 ALUMINUM WINDOW HEAD -  
 RECESSED WINDOW

**U031**

DATE DRAWN:  
 03/02/15

SCALE:  
 3"=1'-0"

DRAWN BY:  
 TRI