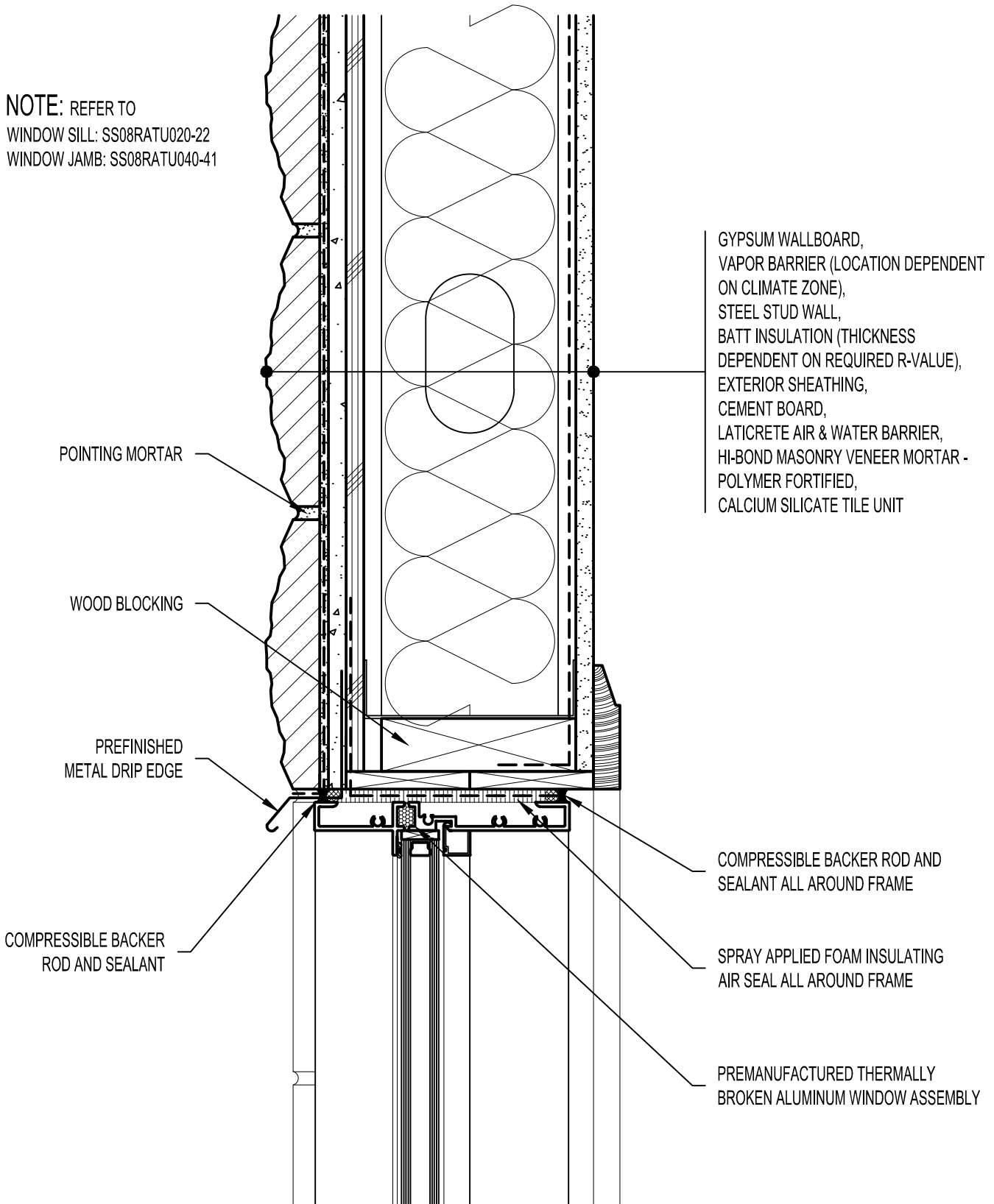


NOTE: REFER TO  
 WINDOW SILL: SS08RATU020-22  
 WINDOW JAMB: SS08RATU040-41



POINTING MORTAR

WOOD BLOCKING

PREFINISHED  
 METAL DRIP EDGE

COMPRESSIBLE BACKER  
 ROD AND SEALANT

GYPSUM WALLBOARD,  
 VAPOR BARRIER (LOCATION DEPENDENT  
 ON CLIMATE ZONE),  
 STEEL STUD WALL,  
 BATT INSULATION (THICKNESS  
 DEPENDENT ON REQUIRED R-VALUE),  
 EXTERIOR SHEATHING,  
 CEMENT BOARD,  
 LATICRETE AIR & WATER BARRIER,  
 HI-BOND MASONRY VENEER MORTAR -  
 POLYMER FORTIFIED,  
 CALCIUM SILICATE TILE UNIT

COMPRESSIBLE BACKER ROD AND  
 SEALANT ALL AROUND FRAME

SPRAY APPLIED FOAM INSULATING  
 AIR SEAL ALL AROUND FRAME

PREMANUFACTURED THERMALLY  
 BROKEN ALUMINUM WINDOW ASSEMBLY

**Arriscraft**  
 Building Stone · Brick · Limestone

**ARRISCRAFT-CADD**

DETAIL No:  
 SS08RAT

TITLE:  
 ALUMINUM WINDOW HEAD

**U030**

DATE DRAWN:  
 03/02/15

SCALE:  
 3"=1'-0"

DRAWN BY:  
 TRI