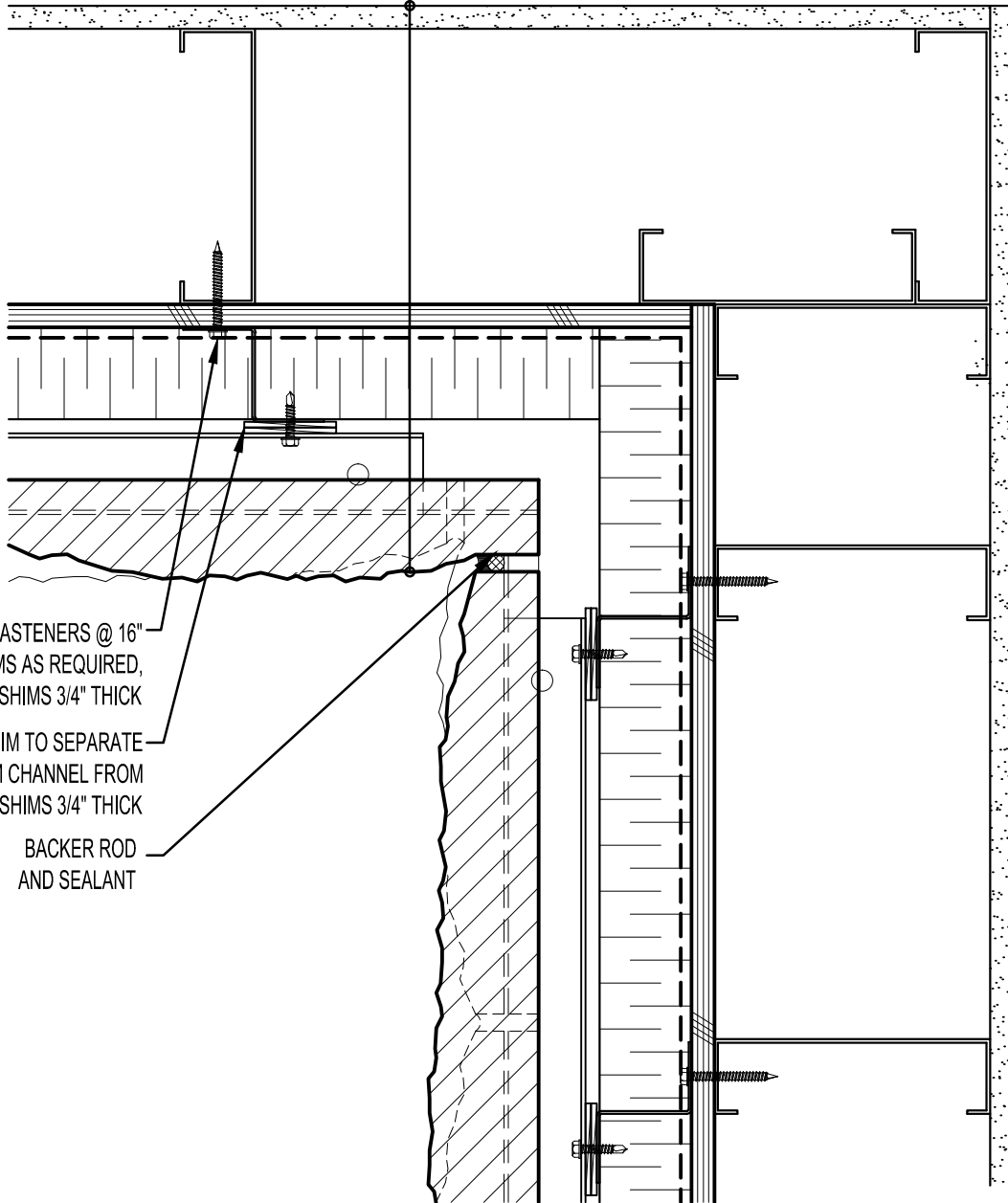


GYPSUM WALLBOARD,  
 STEEL STUD WALL,  
 EXTERIOR SHEATHING,  
 AIR/VAPOR BARRIER MEMBRANE,  
 16 GAUGE Z-CHANNEL,  
 RIGID OR SEMI RIGID INSULATION  
 (THICKNESS DEPENDANT ON  
 REQUIRED R-VALUE),  
 ALUMINUM CHANNELS,  
 1" AIR SPACE,  
 CALCIUM SILICATE CLIP UNIT



Z-CHANNEL FASTENERS @ 16"  
 O.C. C/W SHIMS AS REQUIRED,  
 MAX. SHIMS 3/4" THICK  
 REQUIRED SHIM TO SEPARATE  
 ALUMINUM CHANNEL FROM  
 Z-CHANNEL, MAX. SHIMS 3/4" THICK  
 BACKER ROD  
 AND SEALANT



**ARRISCRAFT**  
 INTERNATIONAL  
 BUILDING STONE • BRICK • LIMESTONE

**ARRISCRAFT • CADD**

TITLE:  
 TYPICAL INSIDE BONDED  
 CORNER

DATE DRAWN:  
 01/15/12

SCALE:  
 3"=1'-0"

DRAWN BY:  
 D.D.N.

DETAIL No:  
 SS 08RU

**AC153**