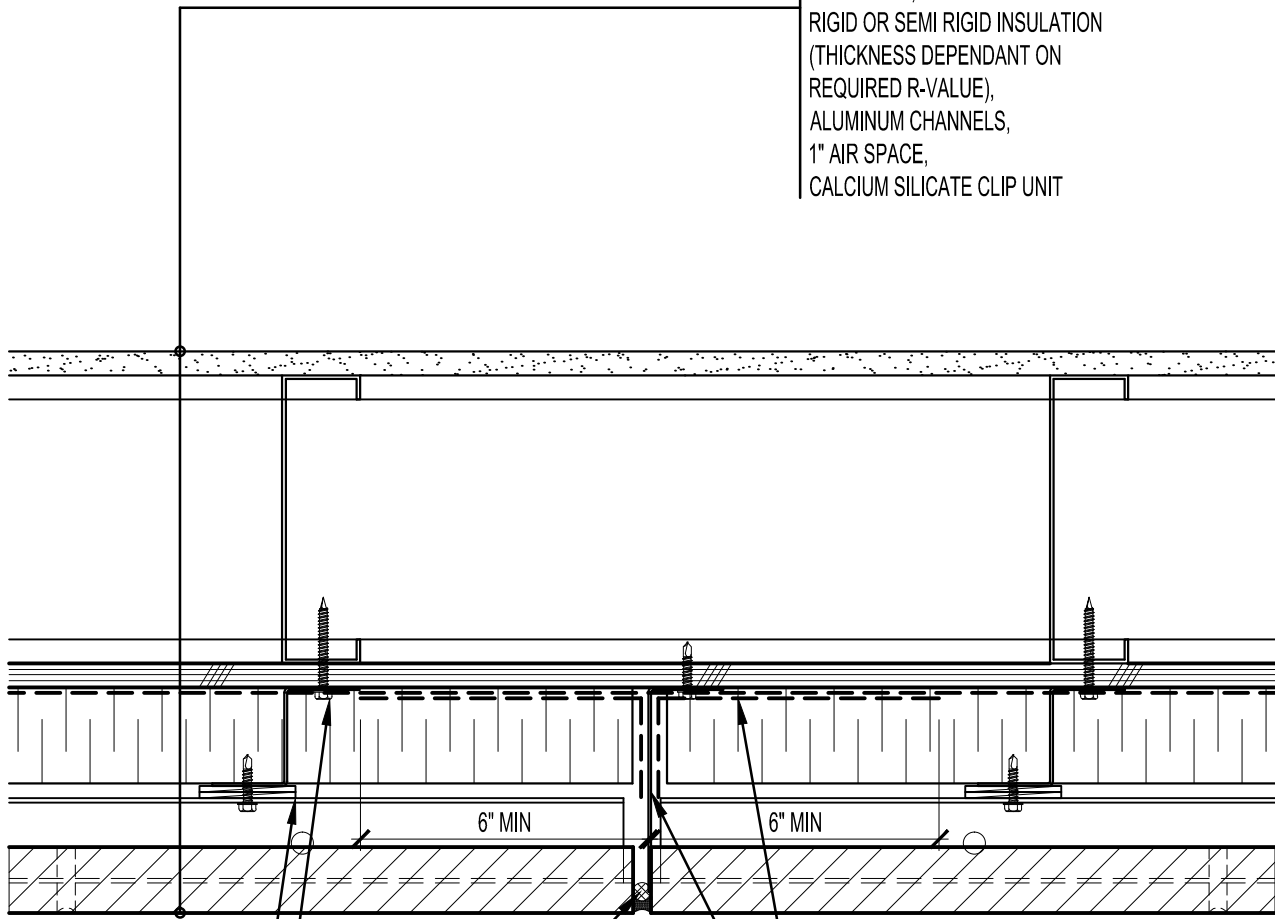


GYPSUM WALLBOARD,
 STEEL STUD WALL,
 EXTERIOR SHEATHING,
 AIR/VAPOR BARRIER MEMBRANE,
 Z-CHANNEL,
 RIGID OR SEMI RIGID INSULATION
 (THICKNESS DEPENDANT ON
 REQUIRED R-VALUE),
 ALUMINUM CHANNELS,
 1" AIR SPACE,
 CALCIUM SILICATE CLIP UNIT



REQUIRED SHIM TO
 SEPARATE
 ALUMINUM CHANNEL
 FROM Z-CHANNEL, MAX
 SHIMS 3/4" THICK
 Z-CHANNEL FASTENERS
 @ 16" O.C. C/W SHIMS AS
 REQUIRED, MAX SHIMS
 3/4" THICK
 BACKER ROD
 AND SEALANT

FLASHING ADHERED TO STAINLESS
 STEEL METAL FLASHING TO SEAL
 COMPARTMENT
 CONTINUOUS STAINLESS STEEL
 METAL FLASHING EMBEDDED IN
 CONTINUOUS VERTICAL JOINT AND
 SEALED WITH A GOOD QUALITY
 BACKER ROD AND SEALANT TO
 CREATE COMPARTMENTS - SPACED
 NO MORE THEN 25'-0" APART



ARRISCRAFT
 INTERNATIONAL
 BUILDING STONE • BRICK • LIMESTONE

ARRISCRAFT • CADD
 TITLE:
 TYPICAL COMPARTMENTALIZATION
 AND MOVEMENT JOINT DETAIL

DATE DRAWN:
 01/15/12
 SCALE:
 3"=1'-0"
 DRAWN BY:
 D.D.N.

DETAIL No:
AC141