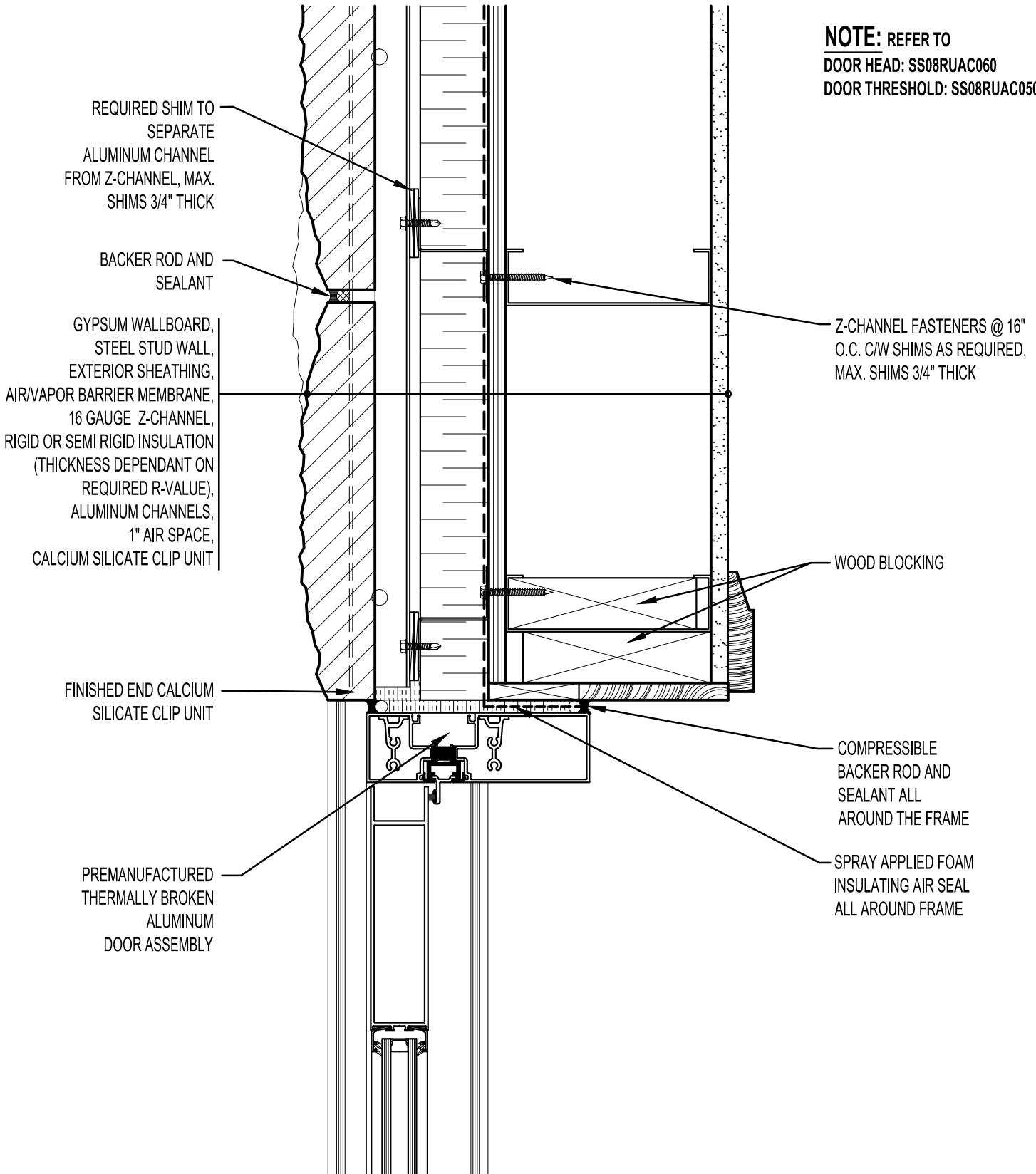


**NOTE:** REFER TO  
 DOOR HEAD: SS08RUAC060  
 DOOR THRESHOLD: SS08RUAC050



REQUIRED SHIM TO SEPARATE ALUMINUM CHANNEL FROM Z-CHANNEL, MAX. SHIMS 3/4" THICK

BACKER ROD AND SEALANT

GYPSUM WALLBOARD, STEEL STUD WALL, EXTERIOR SHEATHING, AIR/VAPOR BARRIER MEMBRANE, 16 GAUGE Z-CHANNEL, RIGID OR SEMI RIGID INSULATION (THICKNESS DEPENDANT ON REQUIRED R-VALUE), ALUMINUM CHANNELS, 1" AIR SPACE, CALCIUM SILICATE CLIP UNIT

FINISHED END CALCIUM SILICATE CLIP UNIT

PREMANUFACTURED THERMALLY BROKEN ALUMINUM DOOR ASSEMBLY

Z-CHANNEL FASTENERS @ 16" O.C. C/W SHIMS AS REQUIRED, MAX. SHIMS 3/4" THICK

WOOD BLOCKING

COMPRESSIBLE BACKER ROD AND SEALANT ALL AROUND THE FRAME

SPRAY APPLIED FOAM INSULATING AIR SEAL ALL AROUND FRAME



**ARRISCRAFT**  
 INTERNATIONAL  
 BUILDING STONE • BRICK • LIMESTONE

**ARRISCRAFT • CADD**

TITLE:  
 ALUMINUM DOOR  
 JAMB (PLAN VIEW)

DATE DRAWN:  
 01/15/12

SCALE:  
 3"=1'-0"

DRAWN BY:  
 D.D.N.

DETAIL No:  
 SS 08RU

**AC070**