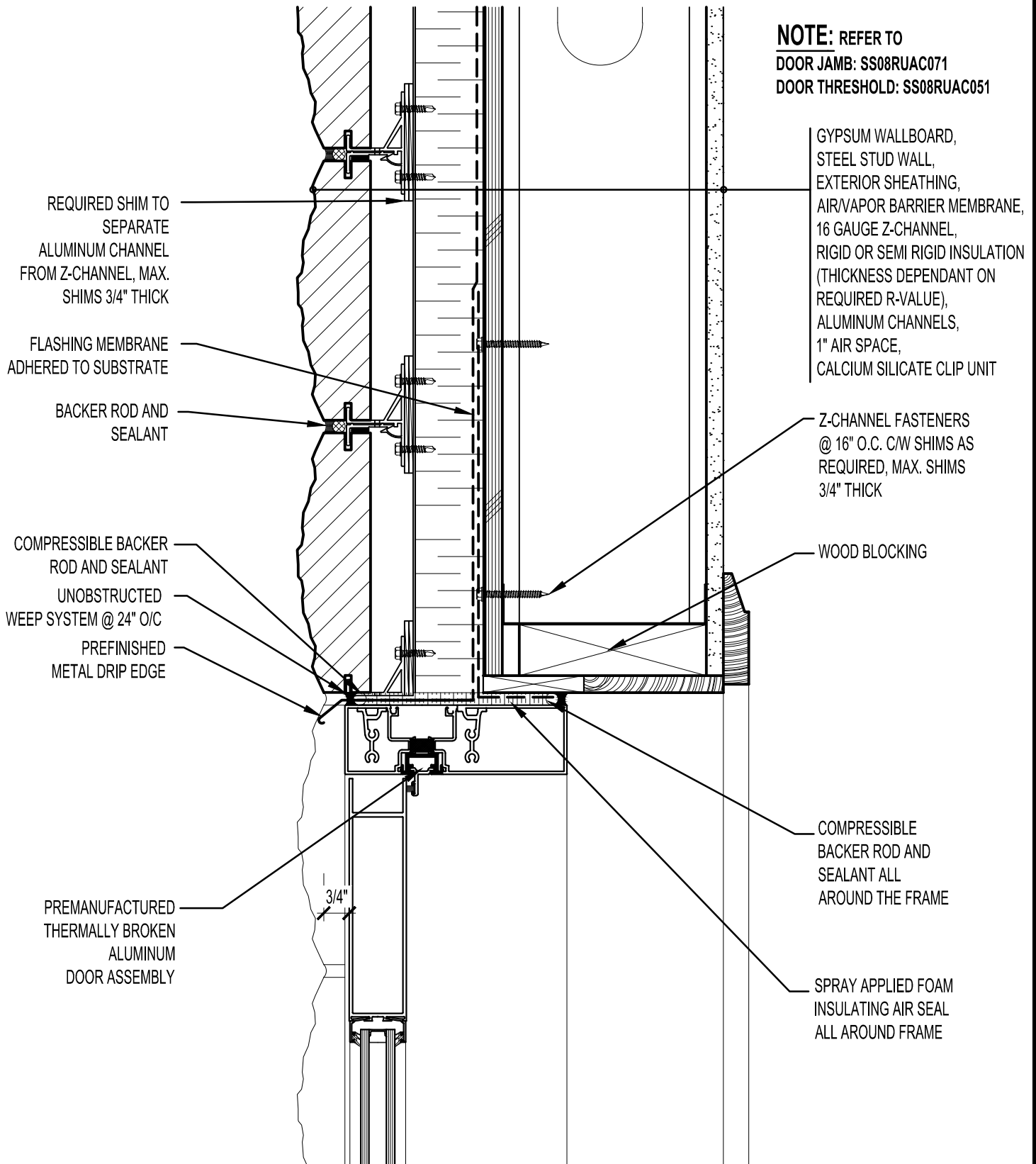


NOTE: REFER TO
DOOR JAMB: SS08RUAC071
DOOR THRESHOLD: SS08RUAC051



GYPSUM WALLBOARD,
 STEEL STUD WALL,
 EXTERIOR SHEATHING,
 AIR/VAPOR BARRIER MEMBRANE,
 16 GAUGE Z-CHANNEL,
 RIGID OR SEMI RIGID INSULATION
 (THICKNESS DEPENDANT ON
 REQUIRED R-VALUE),
 ALUMINUM CHANNELS,
 1" AIR SPACE,
 CALCIUM SILICATE CLIP UNIT

Z-CHANNEL FASTENERS
 @ 16" O.C. C/W SHIMS AS
 REQUIRED, MAX. SHIMS
 3/4" THICK

WOOD BLOCKING

COMPRESSIBLE
 BACKER ROD AND
 SEALANT ALL
 AROUND THE FRAME

SPRAY APPLIED FOAM
 INSULATING AIR SEAL
 ALL AROUND FRAME

PREMANUFACTURED
 THERMALLY BROKEN
 ALUMINUM
 DOOR ASSEMBLY

ARRISCRAFT • CADD

DATE DRAWN:
01/15/12

DETAIL No:
SS 08RU

TITLE:
ALUMINUM DOOR
HEAD - DOOR @ KERF

SCALE:
3"=1'-0"

DRAWN BY:
D.D.N.

AC061



ARRISCRAFT
 INTERNATIONAL
 BUILDING STONE • BRICK • LIMESTONE