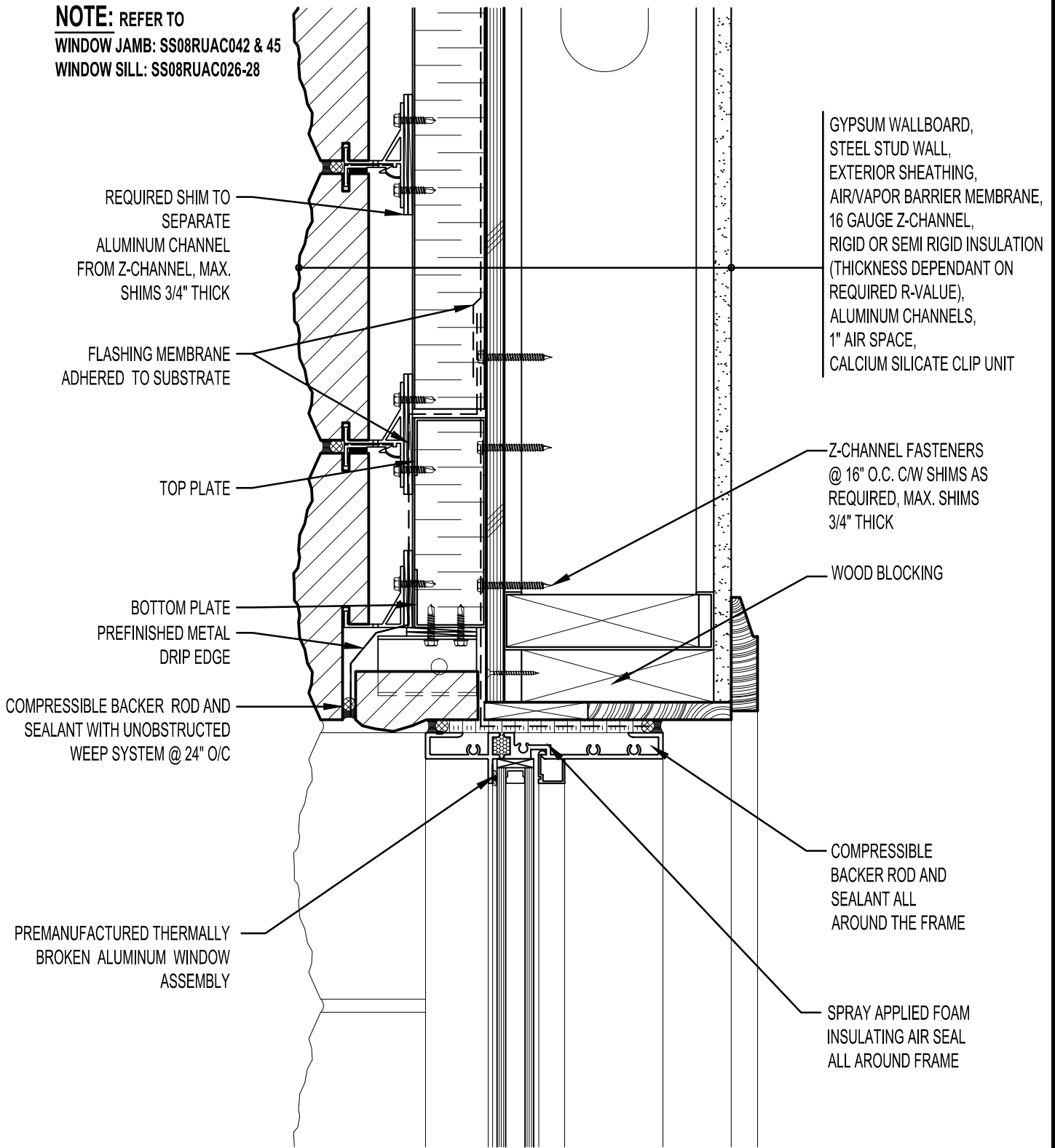


NOTE: REFER TO
 WINDOW JAMB: SS08RUAC042 & 45
 WINDOW SILL: SS08RUAC026-28



REQUIRED SHIM TO SEPARATE ALUMINUM CHANNEL FROM Z-CHANNEL, MAX. SHIMS 3/4" THICK

FLASHING MEMBRANE ADHERED TO SUBSTRATE

TOP PLATE

BOTTOM PLATE
 PREFINISHED METAL
 DRIP EDGE

COMPRESSIBLE BACKER ROD AND SEALANT WITH UNOBSTRUCTED WEEP SYSTEM @ 24" O/C

PREMANUFACTURED THERMALLY BROKEN ALUMINUM WINDOW ASSEMBLY

GYPSUM WALLBOARD, STEEL STUD WALL, EXTERIOR SHEATHING, AIR/VAPOR BARRIER MEMBRANE, 16 GAUGE Z-CHANNEL, RIGID OR SEMI RIGID INSULATION (THICKNESS DEPENDANT ON REQUIRED R-VALUE), ALUMINUM CHANNELS, 1" AIR SPACE, CALCIUM SILICATE CLIP UNIT

Z-CHANNEL FASTENERS @ 16" O.C. C/W SHIMS AS REQUIRED, MAX. SHIMS 3/4" THICK

WOOD BLOCKING

COMPRESSIBLE BACKER ROD AND SEALANT ALL AROUND THE FRAME

SPRAY APPLIED FOAM INSULATING AIR SEAL ALL AROUND FRAME



ARRISCRAFT
 INTERNATIONAL
 BUILDING STONE • BRICK • LIMESTONE

ARRISCRAFT • CADD

TITLE:
 ALUMINUM WINDOW HEAD
 WITH RETURN CLIP UNIT

DATE DRAWN:
 01/15/12

SCALE:
 3"=1'-0"

DRAWN BY:
 D.D.N.

DETAIL No:
 SS 08RU

AC031