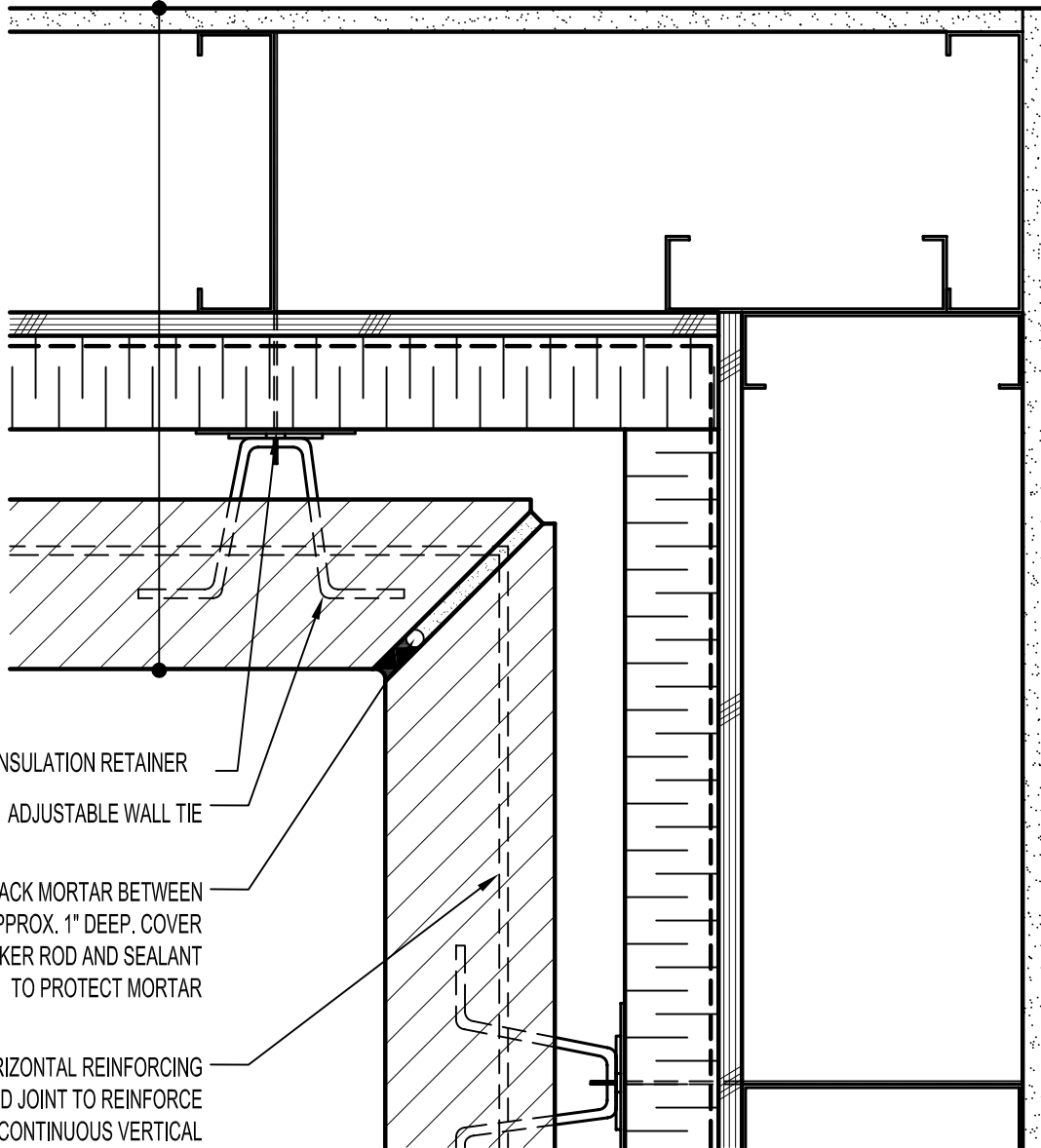


GYPSUM WALLBOARD,  
 STEEL STUD WALL,  
 EXTERIOR SHEATHING,  
 AIR/VAPOR BARRIER  
 MEMBRANE,  
 RIGID OR SEMI-RIGID  
 INSULATION (THICKNESS  
 DEPENDANT ON REQUIRED  
 R-VALUE),  
 MIN. 1" AIR SPACE,  
 CALCIUM SILICATE MASONRY UNIT (CSMU).



INSULATION RETAINER

ADJUSTABLE WALL TIE

RAKE BACK MORTAR BETWEEN  
 UNITS APPROX. 1" DEEP. COVER  
 WITH BACKER ROD AND SEALANT  
 TO PROTECT MORTAR

HORIZONTAL REINFORCING  
 IN BED JOINT TO REINFORCE  
 CONTINUOUS VERTICAL  
 CORNER JOINT



**ARRISCRAFT**  
 INTERNATIONAL  
 BUILDING STONE • BRICK • LIMESTONE

**ARRISCRAFT • CADD**

TITLE:

**INSIDE MITERED CORNER**

DATE DRAWN:  
 08/30/04

SCALE:  
 3"=1'-0"

DRAWN BY:  
 LPS

DETAIL No:

SS 04S

**U151**