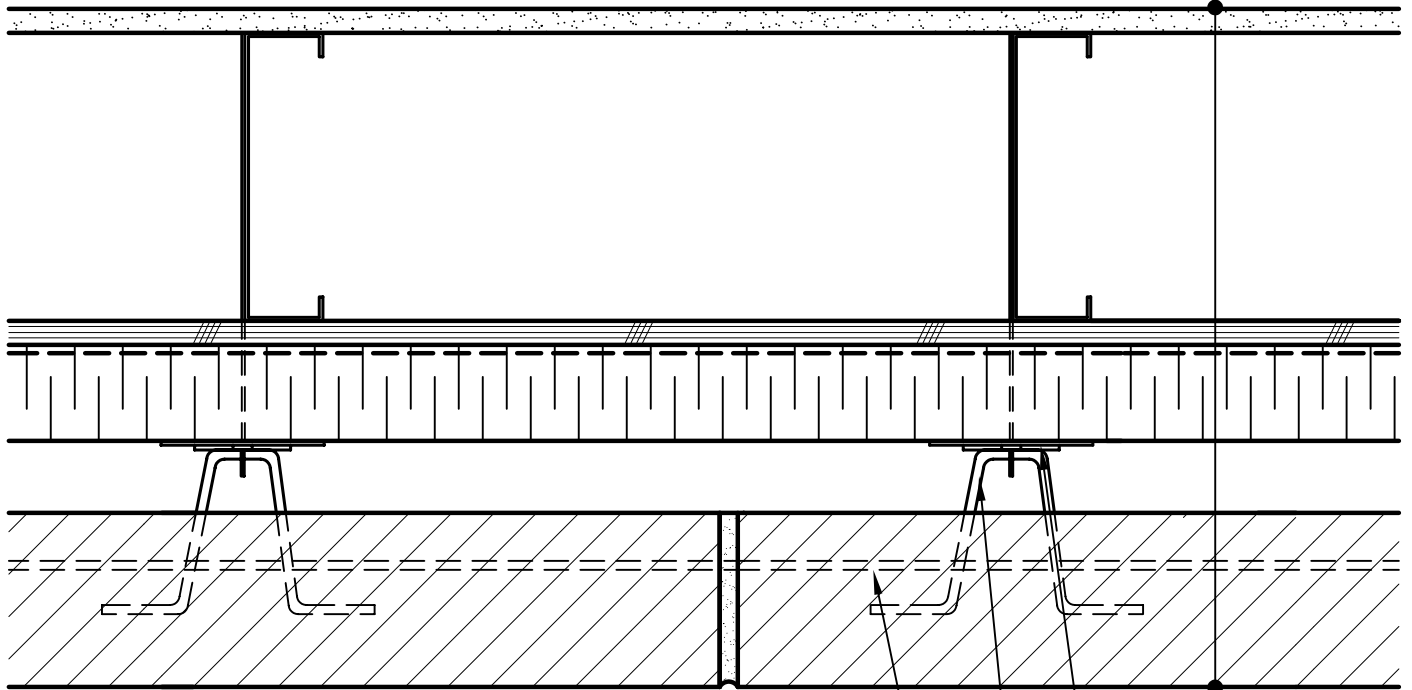


GYPSUM WALLBOARD,
 STEEL STUD WALL,
 EXTERIOR SHEATHING,
 AIR/VAPOR BARRIER
 MEMBRANE,
 RIGID OR SEMI-RIGID
 INSULATION (THICKNESS
 DEPENDANT ON REQUIRED
 R-VALUE),
 MIN. 1" AIR SPACE,
 CALCIUM SILICATE MASONRY UNIT (CSMU).




 3/8" MIN.

INSULATION RETAINER
 ADJUSTABLE WALL TIE
 HORIZONTAL REINFORCING
 IN BED JOINTS TO REINFORCE
 CONTINUOUS VERTICAL JOINTS



ARRISCRAFT
 INTERNATIONAL
 BUILDING STONE • BRICK • LIMESTONE

ARRISCRAFT • CADD

TITLE:

STACK BOND JOINT

DATE DRAWN:
 08/30/04

SCALE:
 3"=1'-0"

DRAWN BY:
 LPS

DETAIL No:

SS 04S

U142