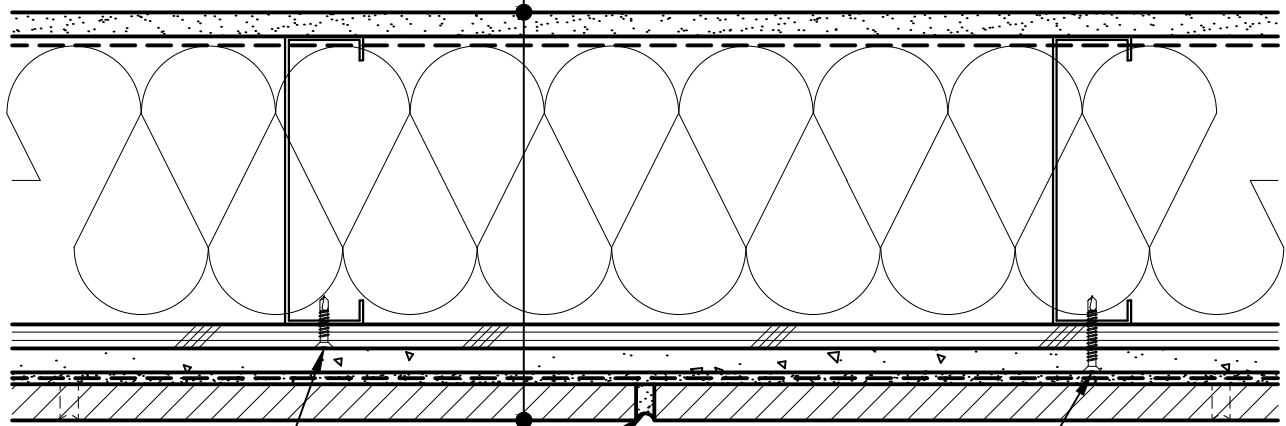


GYPSUM WALLBOARD,
 VAPOR BARRIER (LOCATION
 DEPENDENT ON CLIMATE ZONE),
 STEEL STUD WALL,
 BATT INSULATION (THICKNESS
 DEPENDENT ON REQUIRED R-VALUE),
 EXTERIOR SHEATHING,
 CEMENT BOARD,
 LATICRETE AIR & WATER BARRIER,
 HI-BOND MASONRY VENEER MORTAR -
 POLYMER FORTIFIED,
 CALCIUM SILICATE TILE UNIT



ATTACH SHEATHING WITH
 APPROVED SCREWS
 (TYPICAL @ EVERY STUD)

POINTING MORTAR

ATTACH CEMENT BOARD WITH APPROVED
 SCREWS (TYPICAL @ EVERY STUD)

Arriscraft
 Building Stone · Brick · Limestone

ARRISCRAFT-CADD

DETAIL No:

SS04SAT

TITLE:

TYPICAL VERTICAL
 JOINT DETAIL

U140

DATE DRAWN:
 03/02/15

SCALE:
 3"=1'-0"

DRAWN BY:
 TRI