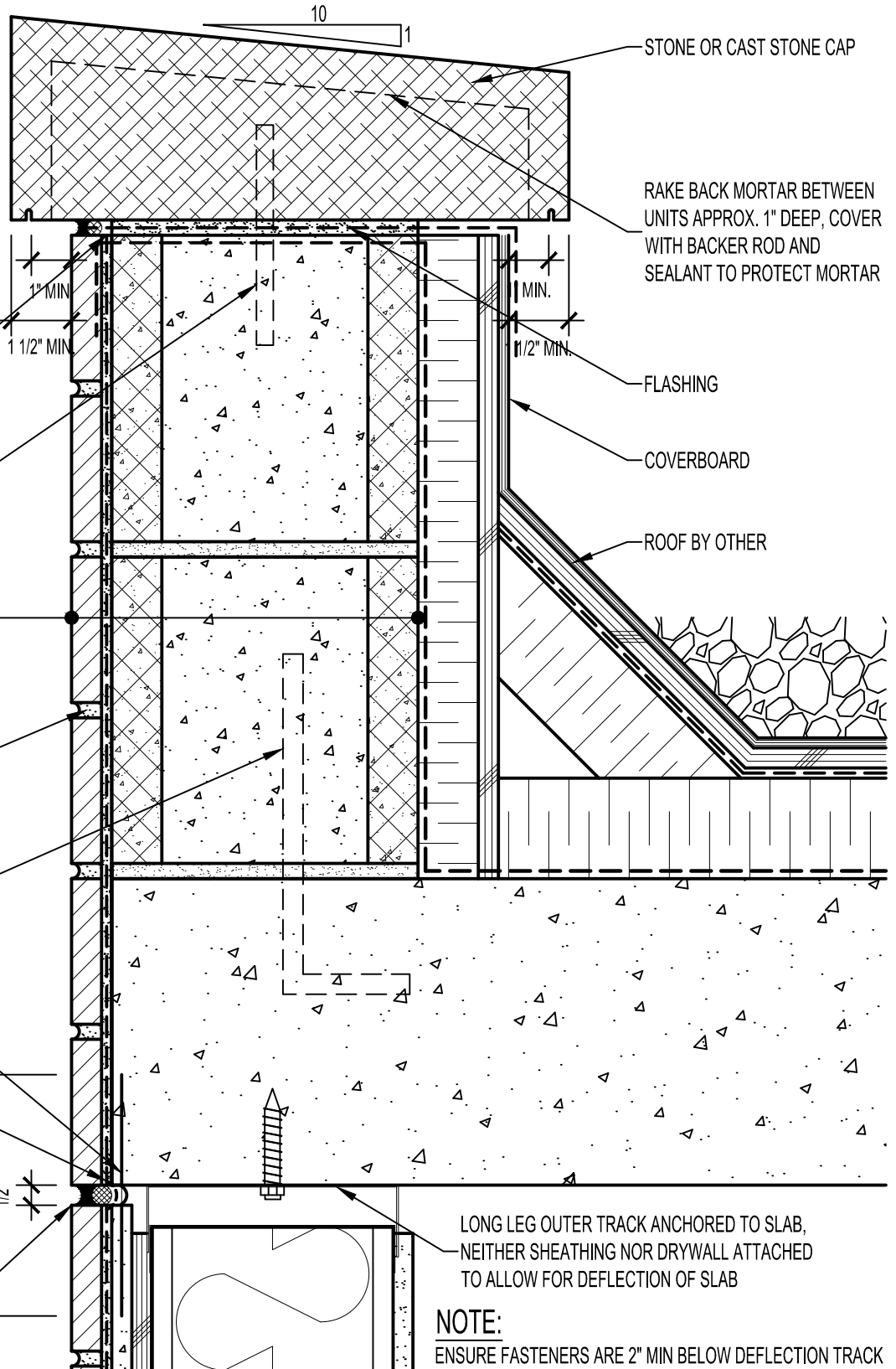


ARCHITECT NOTE:

1/2" MINIMUM DEFLECTION SPACE AT EACH FLOOR ACCOMMODATES 1/4" DISPLACEMENT. WIDER MOVEMENT JOINTS MAY BE REQUIRED BASED UPON ANTICIPATED MOVEMENTS OF STRUCTURAL ELEMENTS AND THE SEALANT PROPERTIES.



STONE OR CAST STONE CAP

RAKE BACK MORTAR BETWEEN UNITS APPROX. 1" DEEP, COVER WITH BACKER ROD AND SEALANT TO PROTECT MORTAR

SEALANT AND BACKER ROD

MECHANICAL ANCHOR

CALCIUM SILICATE TILE UNIT, HI-BOND MASONRY VENEER MORTAR - POLYMER FORTIFIED, LATICRETE AIR & WATER BARRIER, CONCRETE MASONRY UNIT (CMU)

POINTING MORTAR

VERTICAL REINFORCING IF REQUIRED

WATERPROOFING FABRIC LEFT LOOSE FOR ACCOMMODATION OF SLAB EDGE MOVEMENT
COAT WATERPROOFING FABRIC WITH AIR / WATER BARRIER

MOVEMENT JOINT REFERENCE NOTE IN TOP LEFT CORNER

MOVEMENT JOINT SEALED WITH SILICONE SEALANT AND BACKER ROD

FLASHING

COVERBOARD

ROOF BY OTHER

LONG LEG OUTER TRACK ANCHORED TO SLAB, NEITHER SHEATHING NOR DRYWALL ATTACHED TO ALLOW FOR DEFLECTION OF SLAB

NOTE:
ENSURE FASTENERS ARE 2" MIN BELOW DEFLECTION TRACK

Arriscraft
Building Stone · Brick · Limestone

ARRISCRAFT-CADD

DETAIL No:
SS04SAT

TITLE:

PARAPET TO WALL WITH
STONE OR CAST STONE CAP

U122

DATE DRAWN:
03/02/15

SCALE:
3"=1'-0"

DRAWN BY:
TRI