

NOTE: REFER TO
 DOOR THRESHOLD: SS04SATU050-51
 DOOR HEAD: SS04SATU061

ATTACH SHEATHING WITH
 APPROVED SCREWS
 (TYPICAL @ EVERY STUD)

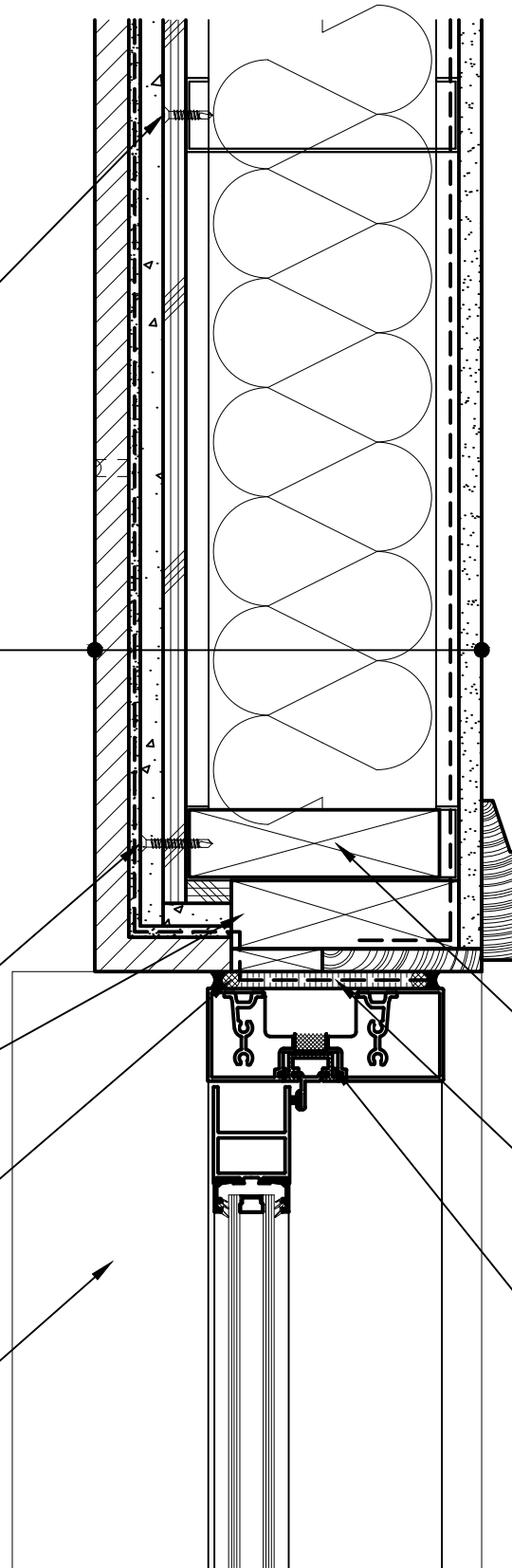
CALCIUM SILICATE TILE UNIT,
 HI-BOND MASONRY VENEER MORTAR -
 POLYMER FORTIFIED,
 LATICRETE AIR & WATER BARRIER,
 CEMENT BOARD,
 EXTERIOR SHEATHING,
 STEEL STUD WALL,
 BATT INSULATION (THICKNESS
 DEPENDENT ON REQUIRED R-VALUE),
 VAPOR BARRIER (LOCATION
 DEPENDENT ON CLIMATE ZONE),
 GYPSUM WALLBOARD

ATTACH CEMENT BOARD
 WITH APPROVED SCREWS
 (TYPICAL @ EVERY STUD)

WOOD BLOCKING

COMPRESSIBLE BACKER ROD AND
 SEALANT ALL AROUND FRAME

SLOPED THRESHOLD SILL



WOOD BLOCKING

SPRAY APPLIED FOAM INSULATING
 AIR SEAL ALL AROUND FRAME

PREMANUFACTURED THERMALLY
 BROKEN ALUMINUM DOOR ASSEMBLY

Arriscraft
 Building Stone · Brick · Limestone

ARRISCRAFT-CADD

DETAIL No:

SS04SAT

TITLE:

ALUMINUM DOOR JAMB -
 RECESSED DOOR (PLAN VIEW)

U071

DATE DRAWN:
 03/02/15

SCALE:
 3"=1'-0"

DRAWN BY:
 TRI