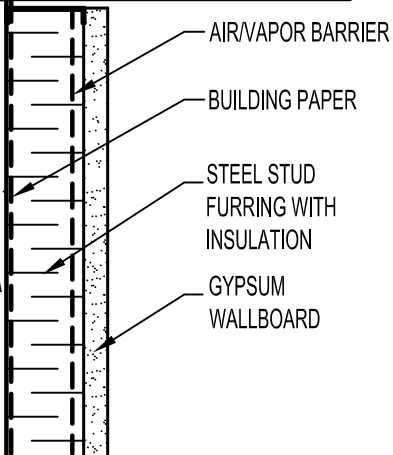
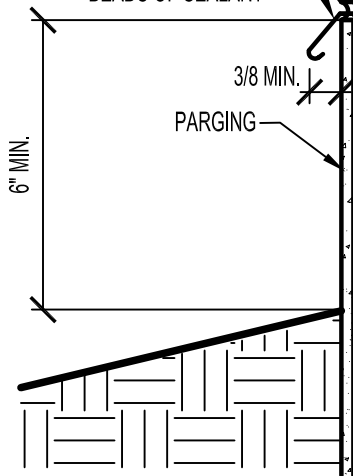
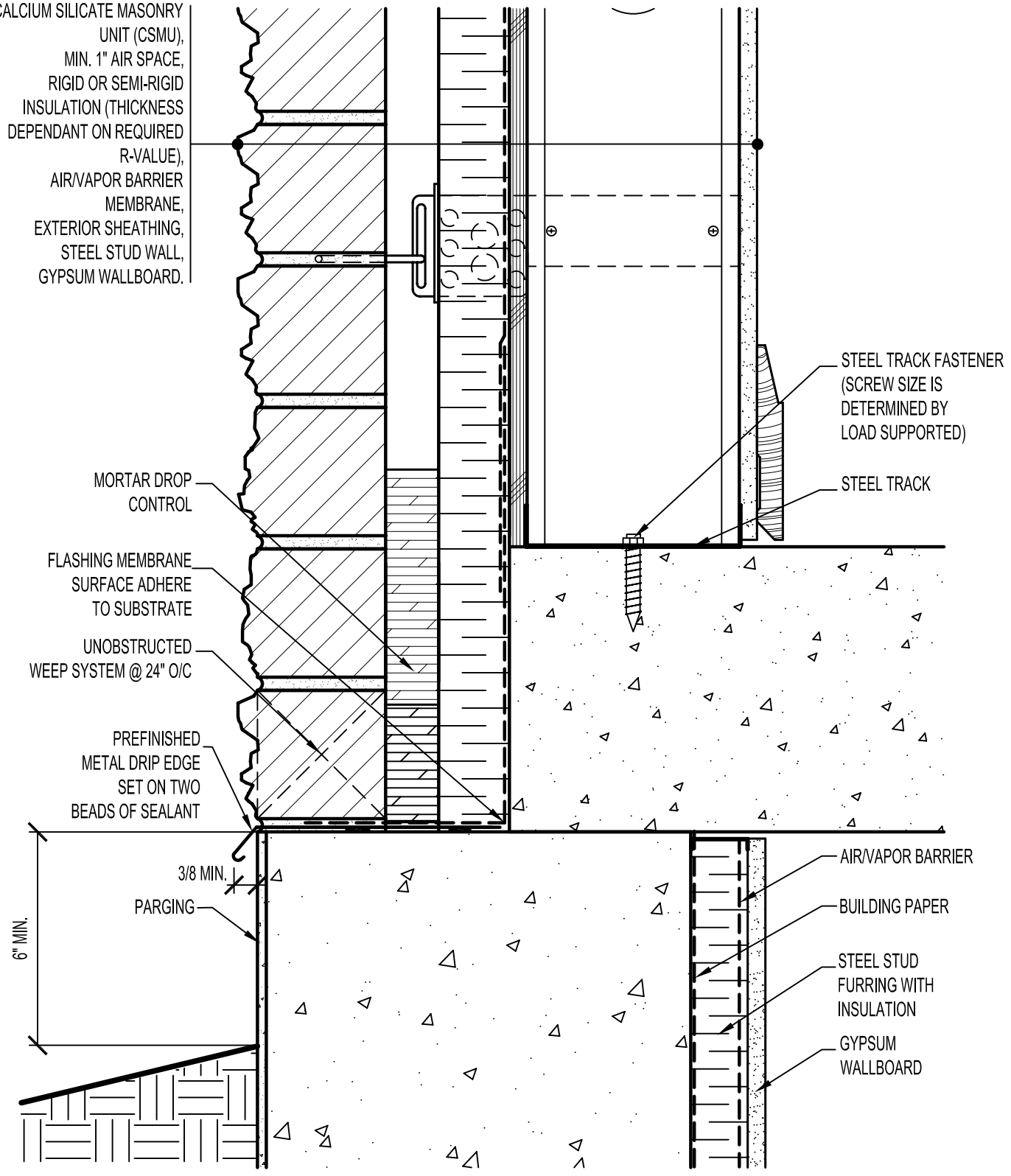


CALCIUM SILICATE MASONRY UNIT (CSMU),
 MIN. 1" AIR SPACE,
 RIGID OR SEMI-RIGID INSULATION (THICKNESS DEPENDANT ON REQUIRED R-VALUE),
 AIR/VAPOR BARRIER MEMBRANE,
 EXTERIOR SHEATHING,
 STEEL STUD WALL,
 GYPSUM WALLBOARD.



ARRISCRAFT
 INTERNATIONAL
 BUILDING STONE • BRICK • LIMESTONE

ARRISCRAFT • CADD

TITLE:
**ALTERNATIVE FOUNDATION
 TO WALL JUNCTION WITH SOIL**

DATE DRAWN:
 08/30/04

SCALE:
 3"=1'-0"

DRAWN BY:
 LPS

DETAIL No:
 SS 04R

U002