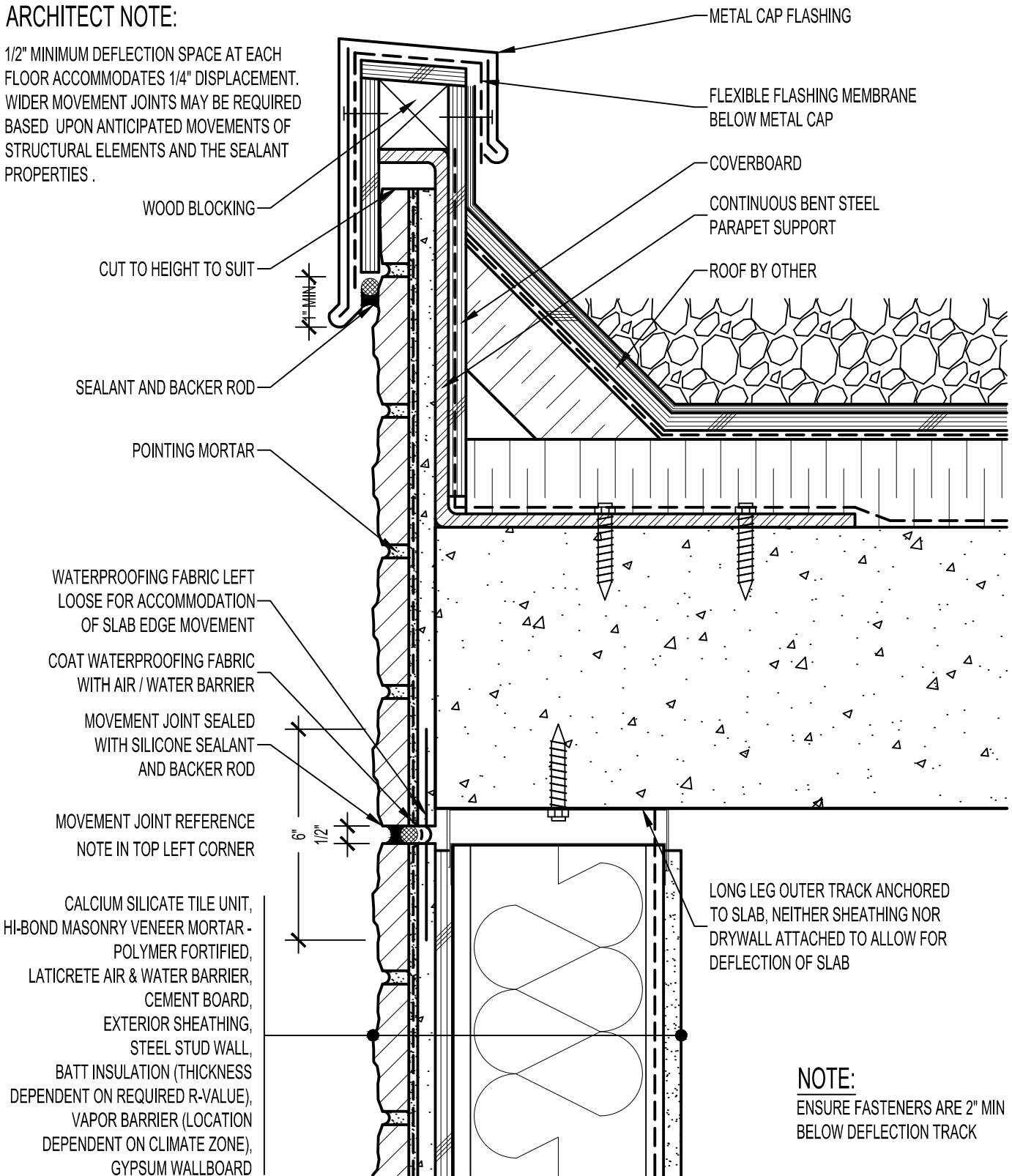


**ARCHITECT NOTE:**

1/2" MINIMUM DEFLECTION SPACE AT EACH FLOOR ACCOMMODATES 1/4" DISPLACEMENT. WIDER MOVEMENT JOINTS MAY BE REQUIRED BASED UPON ANTICIPATED MOVEMENTS OF STRUCTURAL ELEMENTS AND THE SEALANT PROPERTIES.



WOOD BLOCKING

CUT TO HEIGHT TO SUIT

SEALANT AND BACKER ROD

POINTING MORTAR

WATERPROOFING FABRIC LEFT LOOSE FOR ACCOMMODATION OF SLAB EDGE MOVEMENT

COAT WATERPROOFING FABRIC WITH AIR / WATER BARRIER

MOVEMENT JOINT SEALED WITH SILICONE SEALANT AND BACKER ROD

MOVEMENT JOINT REFERENCE NOTE IN TOP LEFT CORNER

CALCIUM SILICATE TILE UNIT, HI-BOND MASONRY VENEER MORTAR - POLYMER FORTIFIED, LATICRETE AIR & WATER BARRIER, CEMENT BOARD, EXTERIOR SHEATHING, STEEL STUD WALL, BATT INSULATION (THICKNESS DEPENDENT ON REQUIRED R-VALUE), VAPOR BARRIER (LOCATION DEPENDENT ON CLIMATE ZONE), GYPSUM WALLBOARD

METAL CAP FLASHING

FLEXIBLE FLASHING MEMBRANE BELOW METAL CAP

COVERBOARD

CONTINUOUS BENT STEEL PARAPET SUPPORT

ROOF BY OTHER

LONG LEG OUTER TRACK ANCHORED TO SLAB, NEITHER SHEATHING NOR DRYWALL ATTACHED TO ALLOW FOR DEFLECTION OF SLAB

**NOTE:**  
ENSURE FASTENERS ARE 2" MIN BELOW DEFLECTION TRACK

**Arriscraft**  
Building Stone · Brick · Limestone

**ARRISCRAFT-CADD**

DETAIL No:  
SS04RAT

TITLE:  
LOW PARAPET TO WALL  
WITH METAL CAP FLASHING

**U120**

DATE DRAWN: 03/02/15  
SCALE: 3"=1'-0"  
DRAWN BY: TRI