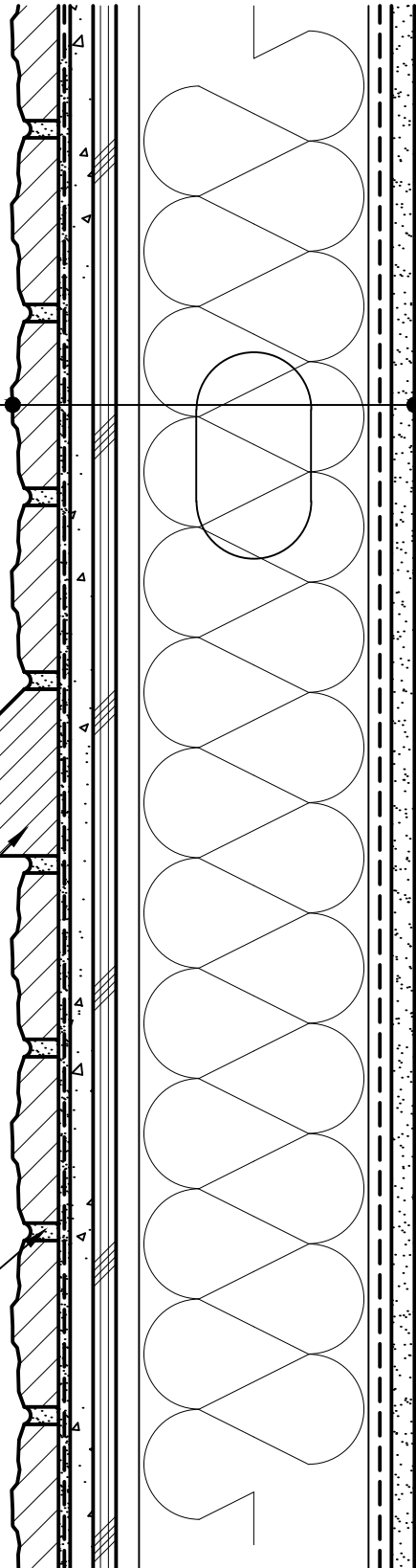


CALCIUM SILICATE TILE UNIT,
 HI-BOND MASONRY VENEER MORTAR -
 POLYMER FORTIFIED,
 LATICRETE AIR & WATER BARRIER,
 CEMENT BOARD,
 EXTERIOR SHEATHING,
 STEEL STUD WALL,
 BATT INSULATION (THICKNESS
 DEPENDENT ON REQUIRED R-VALUE),
 VAPOR BARRIER (LOCATION
 DEPENDENT ON CLIMATE ZONE),
 GYPSUM WALLBOARD

SLOPED WATERTABLE CALCIUM
 SILICATE TILE UNIT

POINTING MORTAR



Arriscraft
 Building Stone · Brick · Limestone

ARRISCRAFT-CADD

DETAIL No:

SS04RAT

TITLE:

SLOPED WATERTABLE

U101

DATE DRAWN:
 03/02/15

SCALE:
 3"=1'-0"

DRAWN BY:
 TRI