

NOTE: REFER TO  
 DOOR THRESHOLD: SS04RATU050-51  
 DOOR HEAD: SS04RATU061

ATTACH SHEATHING WITH  
 APPROVED SCREWS  
 (TYPICAL @ EVERY STUD)

ATTACH CEMENT BOARD  
 WITH APPROVED SCREWS  
 (TYPICAL @ EVERY STUD)

GYPSUM WALLBOARD,  
 VAPOR BARRIER (LOCATION DEPENDENT  
 ON CLIMATE ZONE),  
 STEEL STUD WALL,  
 BATT INSULATION (THICKNESS  
 DEPENDENT ON REQUIRED R-VALUE),  
 EXTERIOR SHEATHING,  
 CEMENT BOARD,  
 LATICRETE AIR & WATER BARRIER,  
 HI-BOND MASONRY VENEER MORTAR -  
 POLYMER FORTIFIED,  
 CALCIUM SILICATE TILE UNIT

WOOD BLOCKING

COMPRESSIBLE BACKER ROD AND  
 SEALANT ALL AROUND FRAME

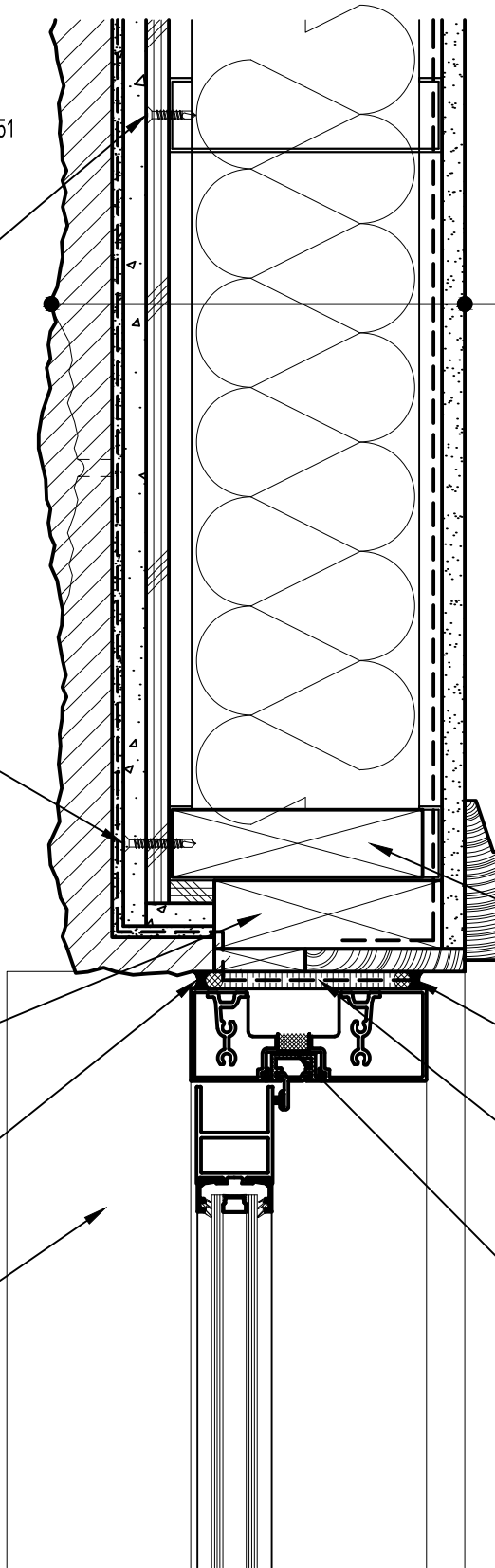
SPRAY APPLIED FOAM INSULATING  
 AIR SEAL ALL AROUND FRAME

PREMANUFACTURED THERMALLY  
 BROKEN ALUMINUM DOOR ASSEMBLY

WOOD BLOCKING

COMPRESSIBLE BACKER  
 ROD AND SEALANT

SLOPED THRESHOLD SILL



**Arriscraft**  
 Building Stone · Brick · Limestone

**ARRISCRAFT-CADD**

DETAIL No:

SS04RAT

TITLE:  
 ALUMINUM DOOR JAMB -  
 RECESSED DOOR (PLAN VIEW)

**U071**

DATE DRAWN:  
 03/02/15

SCALE:  
 3"=1'-0"

DRAWN BY:  
 TRI