

NOTE: REFER TO
 WINDOW SILL: SS04RATU023
 WINDOW HEAD: SS04RATU031

ATTACH SHEATHING WITH
 APPROVED SCREWS
 (TYPICAL @ EVERY STUD)

ATTACH CEMENT BOARD
 WITH APPROVED SCREWS
 (TYPICAL @ EVERY STUD)

GYPSUM WALLBOARD,
 VAPOR BARRIER (LOCATION DEPENDENT
 ON CLIMATE ZONE),
 STEEL STUD WALL,
 BATT INSULATION (THICKNESS
 DEPENDENT ON REQUIRED R-VALUE),
 EXTERIOR SHEATHING,
 CEMENT BOARD,
 LATICRETE AIR & WATER BARRIER,
 HI-BOND MASONRY VENEER MORTAR -
 POLYMER FORTIFIED,
 CALCIUM SILICATE TILE UNIT

WOOD BLOCKING

WOOD BLOCKING

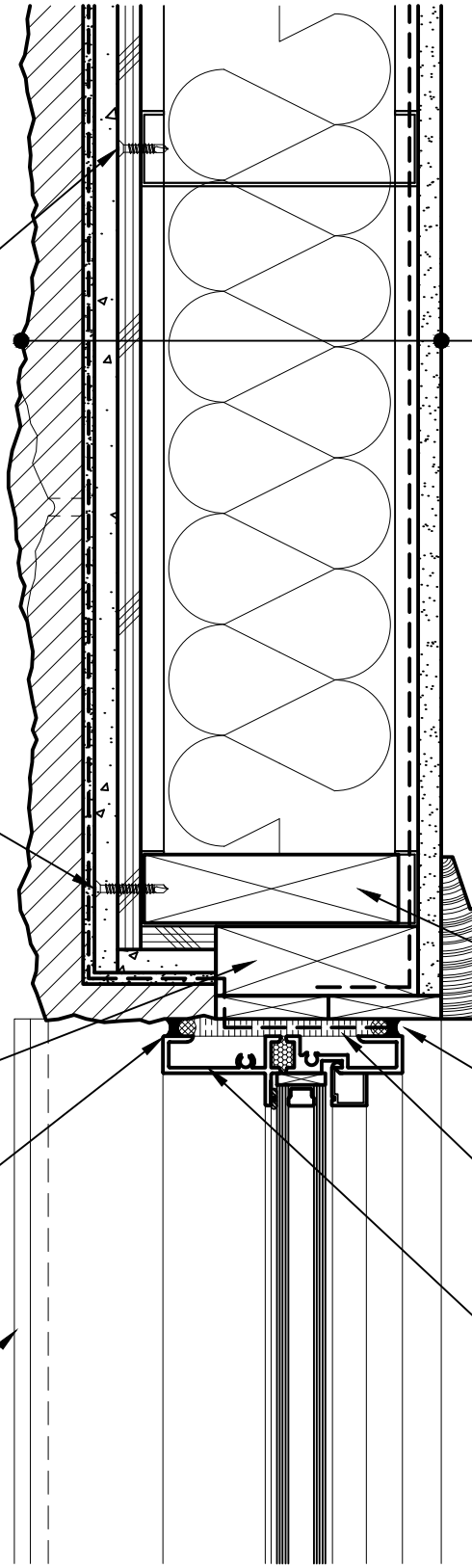
COMPRESSIBLE BACKER ROD AND
 SEALANT ALL AROUND FRAME

COMPRESSIBLE BACKER
 ROD AND SEALANT

SPRAY APPLIED FOAM INSULATING
 AIR SEAL ALL AROUND FRAME

PREFINISHED ALUMINUM
 SILL c/w END DAMS

PREMANUFACTURED THERMALLY
 BROKEN ALUMINUM WINDOW ASSEMBLY



Arriscraft
 Building Stone · Brick · Limestone

ARRISCRAFT-CADD

DETAIL No:

SS04RAT

TITLE: WINDOW JAMB WITH
 ALUMINUM SILL - END RETURN
 TILE UNIT (PLAN VIEW)

U042

DATE DRAWN:
 03/02/15

SCALE:
 3"=1'-0"

DRAWN BY:
 TRI