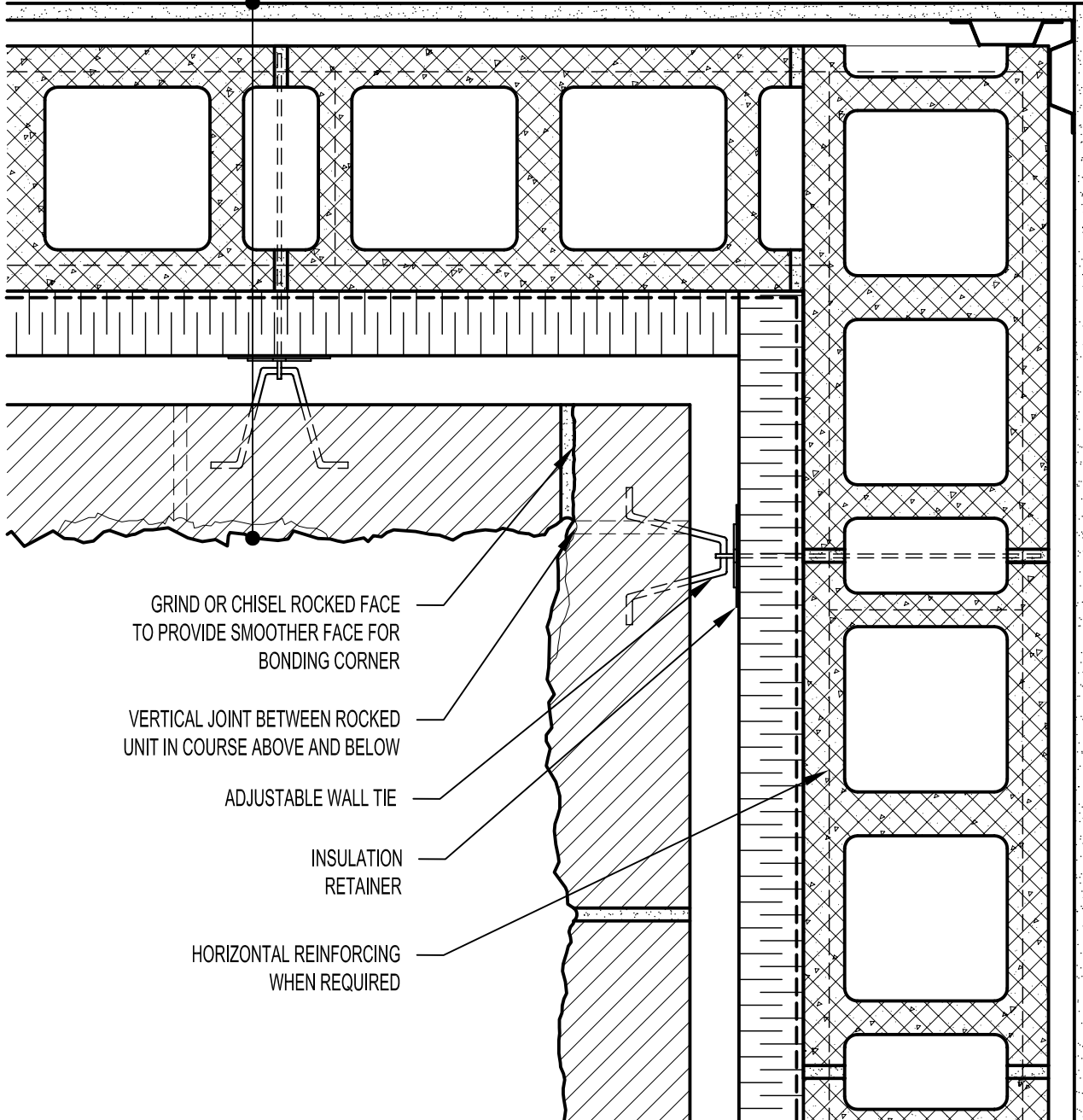


GYPSUM WALLBOARD,
 METAL FURRING (OPTIONAL),
 CONCRETE MASONRY UNIT (CMU),
 AIR/VAPOUR BARRIER
 MEMBRANE,
 RIGID OR SEMI-RIGID INSULATION
 (THICKNESS DEPENDANT ON
 REQUIRED R-VALUE),
 MIN. 25 MM AIR SPACE,
 CALCIUM SILICATE BUILDING STONE.



GRIND OR CHISEL ROCKED FACE
 TO PROVIDE SMOOTHER FACE FOR
 BONDING CORNER

VERTICAL JOINT BETWEEN ROCKED
 UNIT IN COURSE ABOVE AND BELOW

ADJUSTABLE WALL TIE

INSULATION
 RETAINER

HORIZONTAL REINFORCING
 WHEN REQUIRED



ARRISCRAFT
 INTERNATIONAL
 BUILDING STONE • BRICK • LIMESTONE

ARRISCRAFT • CADD

TITLE:

TYPICAL BONDED INSIDE
 CORNER

DATE DRAWN:
 08/30/04

SCALE:
 1:5

DRAWN BY:
 LPS

DETAIL No:
 CB SH3M

D153