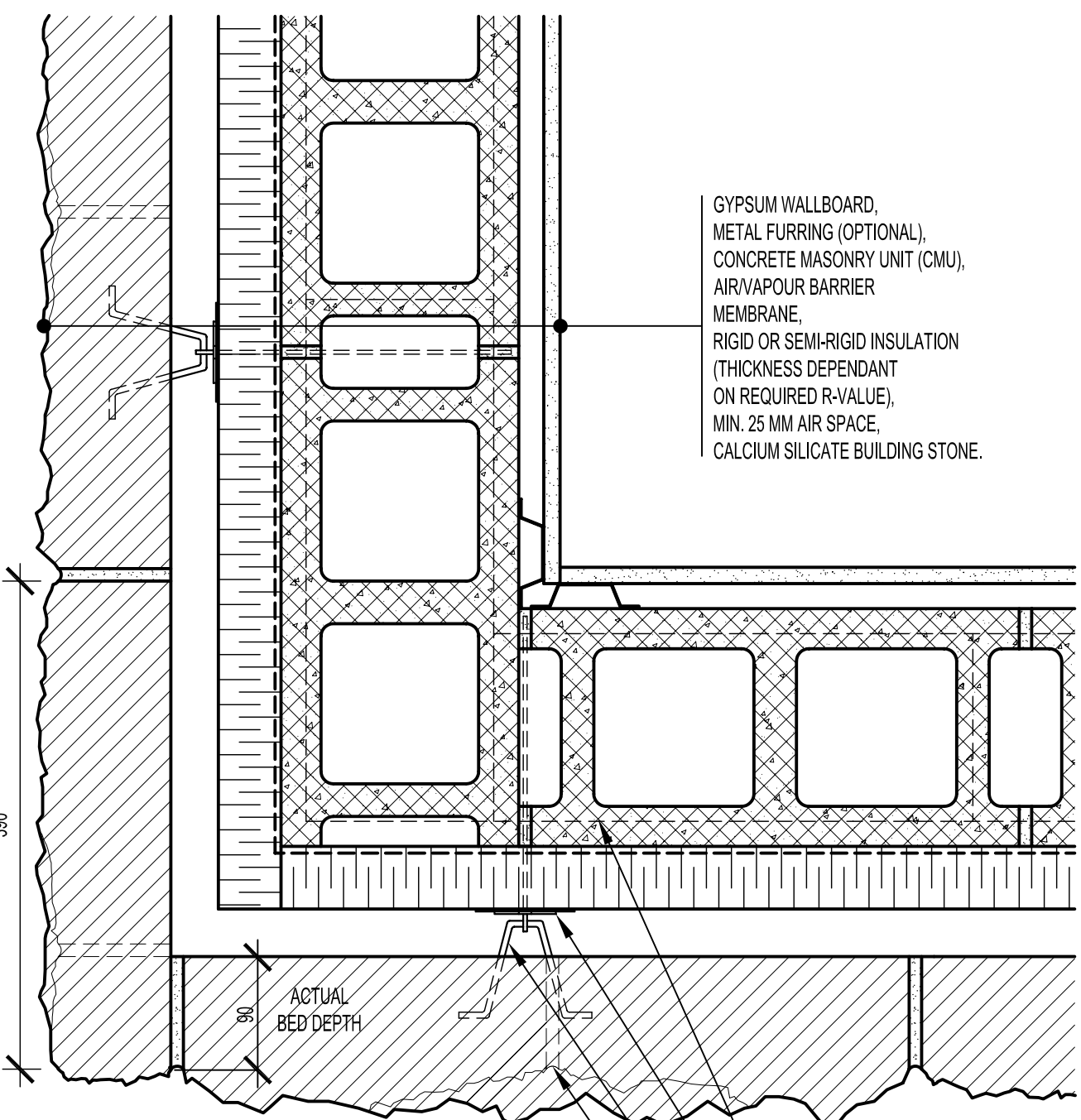


390



GYPSUM WALLBOARD,
 METAL FURRING (OPTIONAL),
 CONCRETE MASONRY UNIT (CMU),
 AIR/VAPOUR BARRIER
 MEMBRANE,
 RIGID OR SEMI-RIGID INSULATION
 (THICKNESS DEPENDANT
 ON REQUIRED R-VALUE),
 MIN. 25 MM AIR SPACE,
 CALCIUM SILICATE BUILDING STONE.

95
 ACTUAL
 BED DEPTH

- HORIZONTAL REINFORCING WHEN REQUIRED
- INSULATION RETAINER
- ADJUSTABLE WALL TIE
- VERTICAL JOINT BETWEEN ROCKED UNITS IN COURSE ABOVE AND BELOW



ARRISCRAFT
 INTERNATIONAL
 BUILDING STONE • BRICK • LIMESTONE

ARRISCRAFT • CADD

TITLE:
 TYPICAL BONDED OUTSIDE
 CORNER

DATE DRAWN:
 08/30/04

SCALE:
 1:5

DRAWN BY:
 LPS

DETAIL No:
 CB SH3M

D152