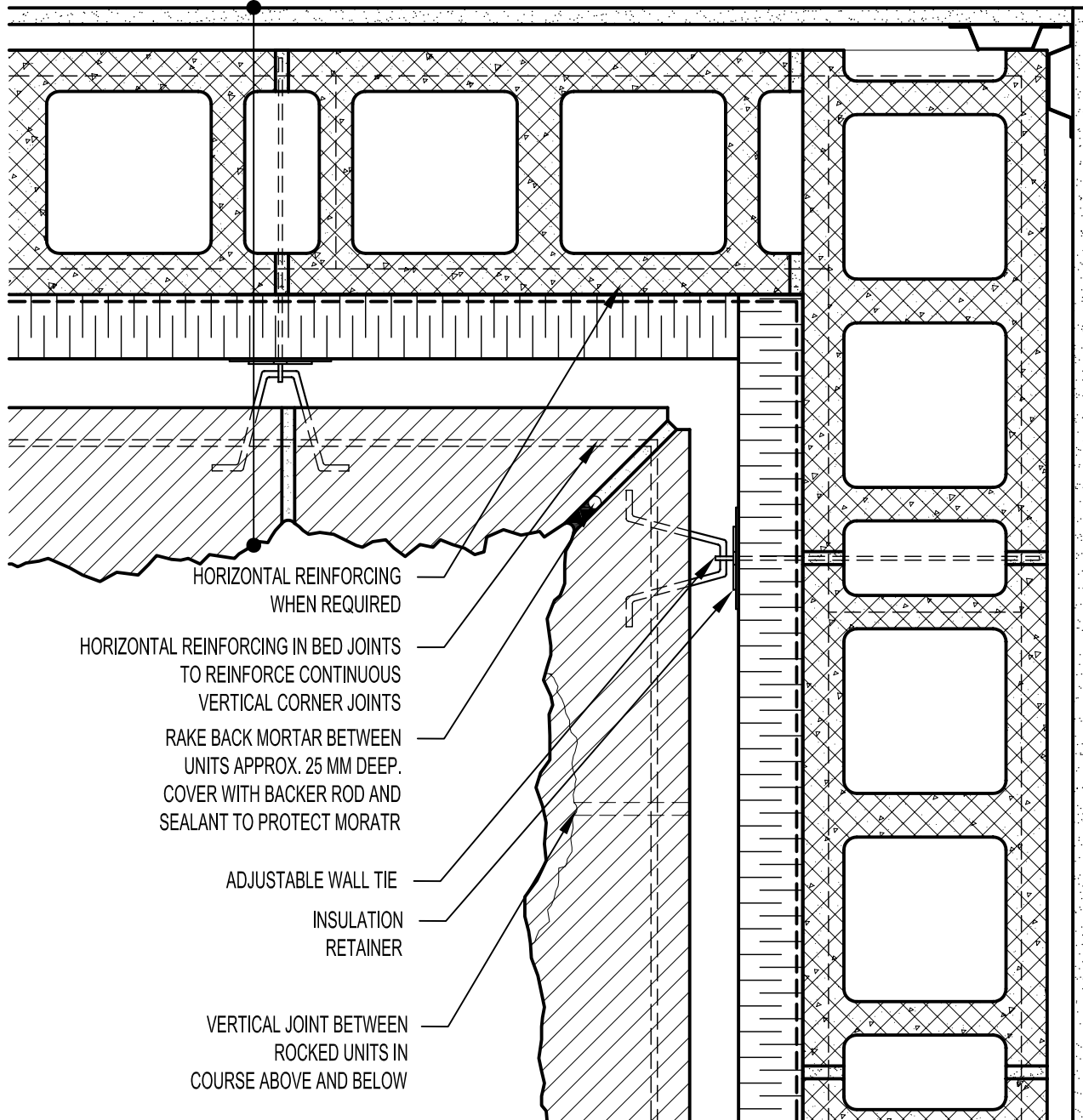


GYPSUM WALLBOARD,
 METAL FURRING (OPTIONAL),
 CONCRETE MASONRY UNIT (CMU),
 AIR/VAPOUR BARRIER
 MEMBRANE,
 RIGID OR SEMI-RIGID INSULATION
 (THICKNESS DEPENDANT ON
 REQUIRED R-VALUE),
 MIN. 25 MM AIR SPACE,
 CALCIUM SILICATE BUILDING STONE.



HORIZONTAL REINFORCING
 WHEN REQUIRED

HORIZONTAL REINFORCING IN BED JOINTS
 TO REINFORCE CONTINUOUS
 VERTICAL CORNER JOINTS

RAKE BACK MORTAR BETWEEN
 UNITS APPROX. 25 MM DEEP.
 COVER WITH BACKER ROD AND
 SEALANT TO PROTECT MORATR

ADJUSTABLE WALL TIE

INSULATION
 RETAINER

VERTICAL JOINT BETWEEN
 ROCKED UNITS IN
 COURSE ABOVE AND BELOW



ARRISCRAFT
 INTERNATIONAL
 BUILDING STONE • BRICK • LIMESTONE

ARRISCRAFT • CADD

TITLE:

INSIDE MITRED CORNER

DATE DRAWN:
 08/30/04

SCALE:
 1:5

DRAWN BY:
 LPS

DETAIL No:
 CB SH3M

D151