

CALCIUM SILICATE
BUILDING STONE,
MIN. 25 MM AIR SPACE,
RIGID OR SEMI-RIGID INSULATION
(THICKNESS DEPENDANT ON
REQUIRED R-VALUE),
AIR/VAPOUR BARRIER
MEMBRANE,
CONCRETE MASONRY UNIT (CMU),
METAL FURRING (OPTIONAL),
GYPSUM WALLBOARD.

SEALANT BEADS FOR
MOISTURE PROTECTION

SLOPE AWAY TO ENSURE
WATER DRAINAGE

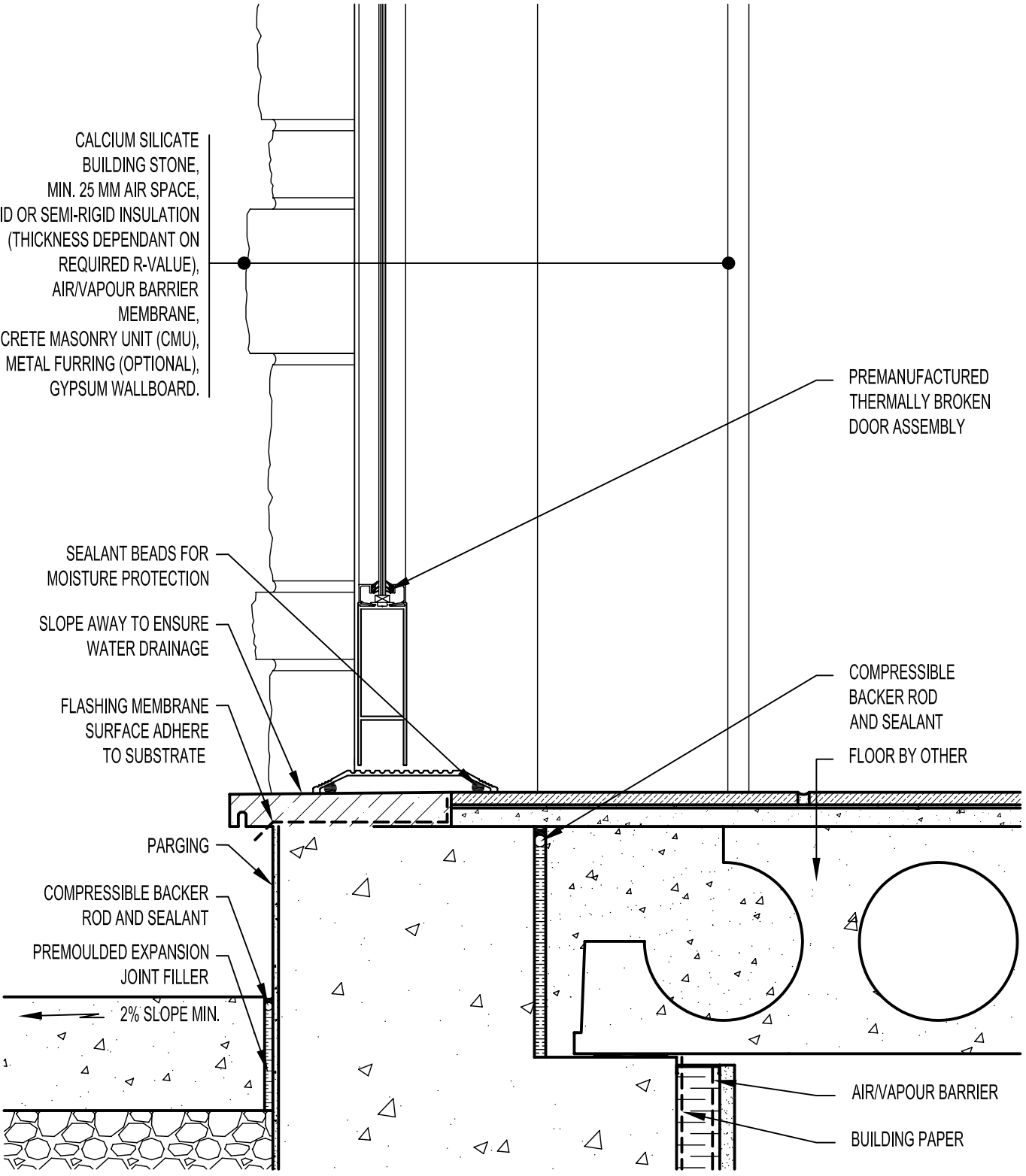
FLASHING MEMBRANE
SURFACE ADHERE
TO SUBSTRATE

PREMANUFACTURED
THERMALLY BROKEN
DOOR ASSEMBLY

COMPRESSIBLE
BACKER ROD
AND SEALANT
FLOOR BY OTHER

PARGING
COMPRESSIBLE BACKER
ROD AND SEALANT
PREMOULDED EXPANSION
JOINT FILLER
2% SLOPE MIN.

AIR/VAPOUR BARRIER
BUILDING PAPER



ARRISCRAFT
INTERNATIONAL
BUILDING STONE • BRICK • LIMESTONE

ARRISCRAFT • CADD

TITLE:

THRESHOLD OF DOOR

DATE DRAWN:
08/30/04

SCALE:
1:5

DRAWN BY:
LPS

DETAIL No:
CB SH3M

D050