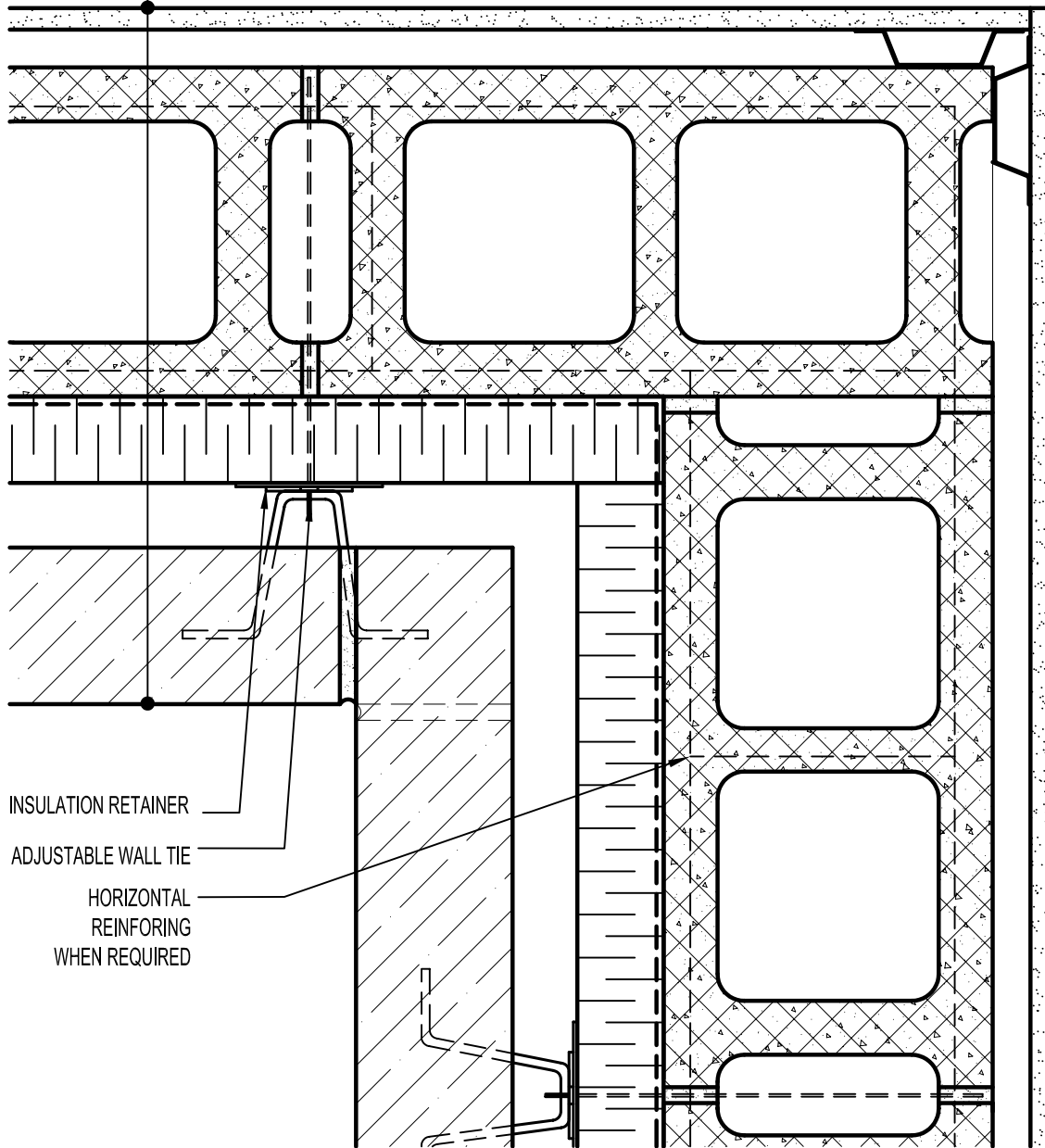


GYPSUM WALLBOARD,
 METAL FURRING (OPTIONAL),
 CONCRETE MASONRY UNIT (CMU),
 AIR/VAPOR BARRIER
 MEMBRANE,
 RIGID OR SEMI-RIGID
 INSULATION (THICKNESS
 DEPENDANT ON
 REQUIRED R-VALUE),
 MIN. 1" AIR SPACE,
 ADAIR® LIMESTONE MASONRY UNIT.



INSULATION RETAINER
 ADJUSTABLE WALL TIE
 HORIZONTAL
 REINFORING
 WHEN REQUIRED



ARRISCRAFT
 INTERNATIONAL
 BUILDING STONE • BRICK • LIMESTONE

ARRISCRAFT • CADD

TITLE:
 TYPICAL BONDED INSIDE
 CORNER

DATE DRAWN:
 08/30/04

SCALE:
 3"=1'-0"

DRAWN BY:
 LPS

DETAIL No:

CBI AD12S

U153