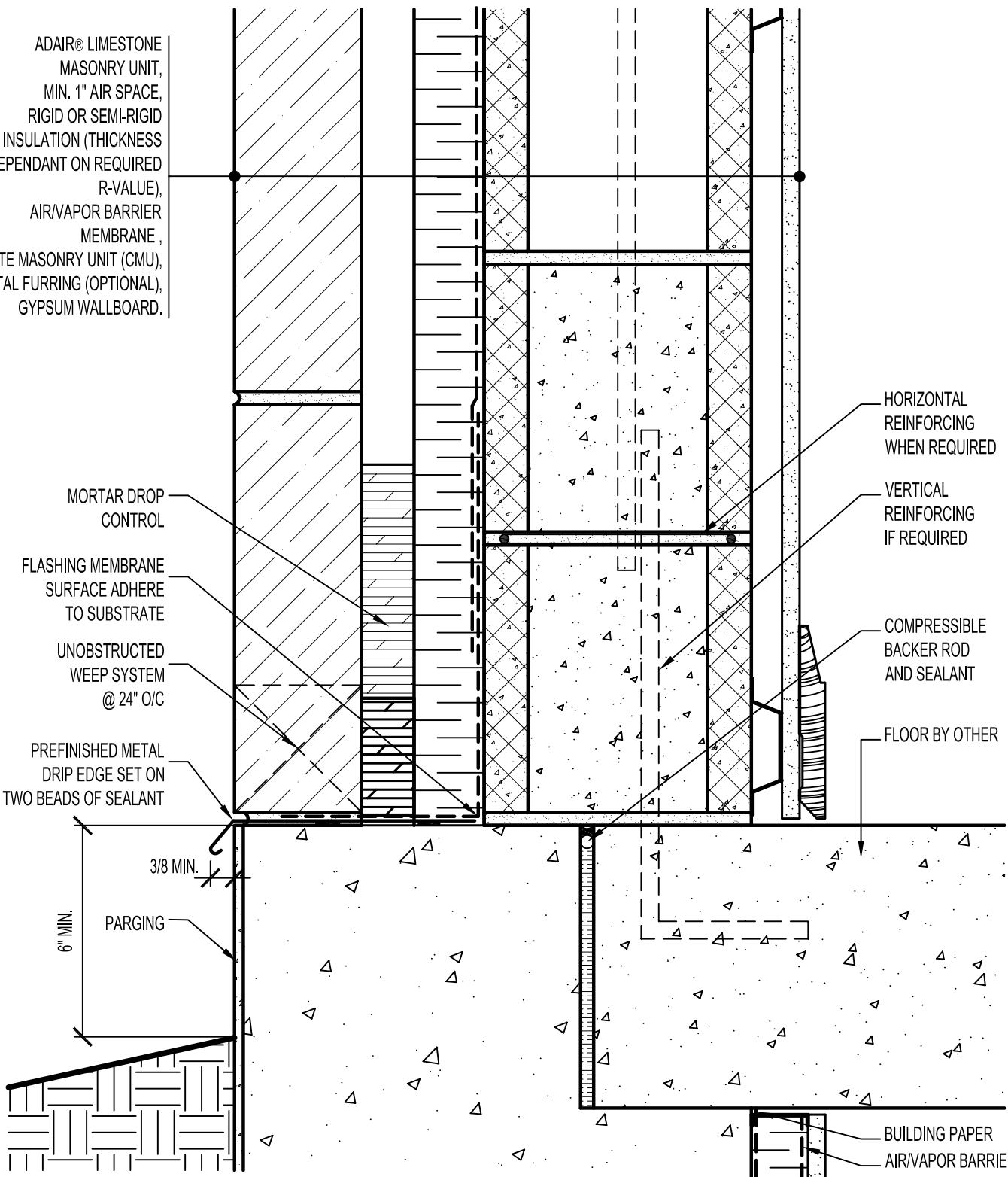


ADAIR® LIMESTONE  
 MASONRY UNIT,  
 MIN. 1" AIR SPACE,  
 RIGID OR SEMI-RIGID  
 INSULATION (THICKNESS  
 DEPENDANT ON REQUIRED  
 R-VALUE),  
 AIR/VAPOR BARRIER  
 MEMBRANE,  
 CONCRETE MASONRY UNIT (CMU),  
 METAL FURRING (OPTIONAL),  
 GYPSUM WALLBOARD.



HORIZONTAL  
 REINFORCING  
 WHEN REQUIRED

VERTICAL  
 REINFORCING  
 IF REQUIRED

COMPRESSIBLE  
 BACKER ROD  
 AND SEALANT

FLOOR BY OTHER

MORTAR DROP  
 CONTROL

FLASHING MEMBRANE  
 SURFACE ADHERE  
 TO SUBSTRATE

UNOBSTRUCTED  
 WEEP SYSTEM  
 @ 24" O/C

PREFINISHED METAL  
 DRIP EDGE SET ON  
 TWO BEADS OF SEALANT

3/8 MIN.

6" MIN.  
 PARKING

BUILDING PAPER  
 AIR/VAPOR BARRIER



**ARRISCRAFT**  
 INTERNATIONAL  
 BUILDING STONE • BRICK • LIMESTONE

**ARRISCRAFT • CADD**

TITLE:  
 FOUNDATION TO WALL  
 JUNCTION AND SOIL

DATE DRAWN:  
 08/30/04

SCALE:  
 3"=1'-0"

DRAWN BY:  
 LPS

DETAIL No:  
 CBI AD12S

**U000**