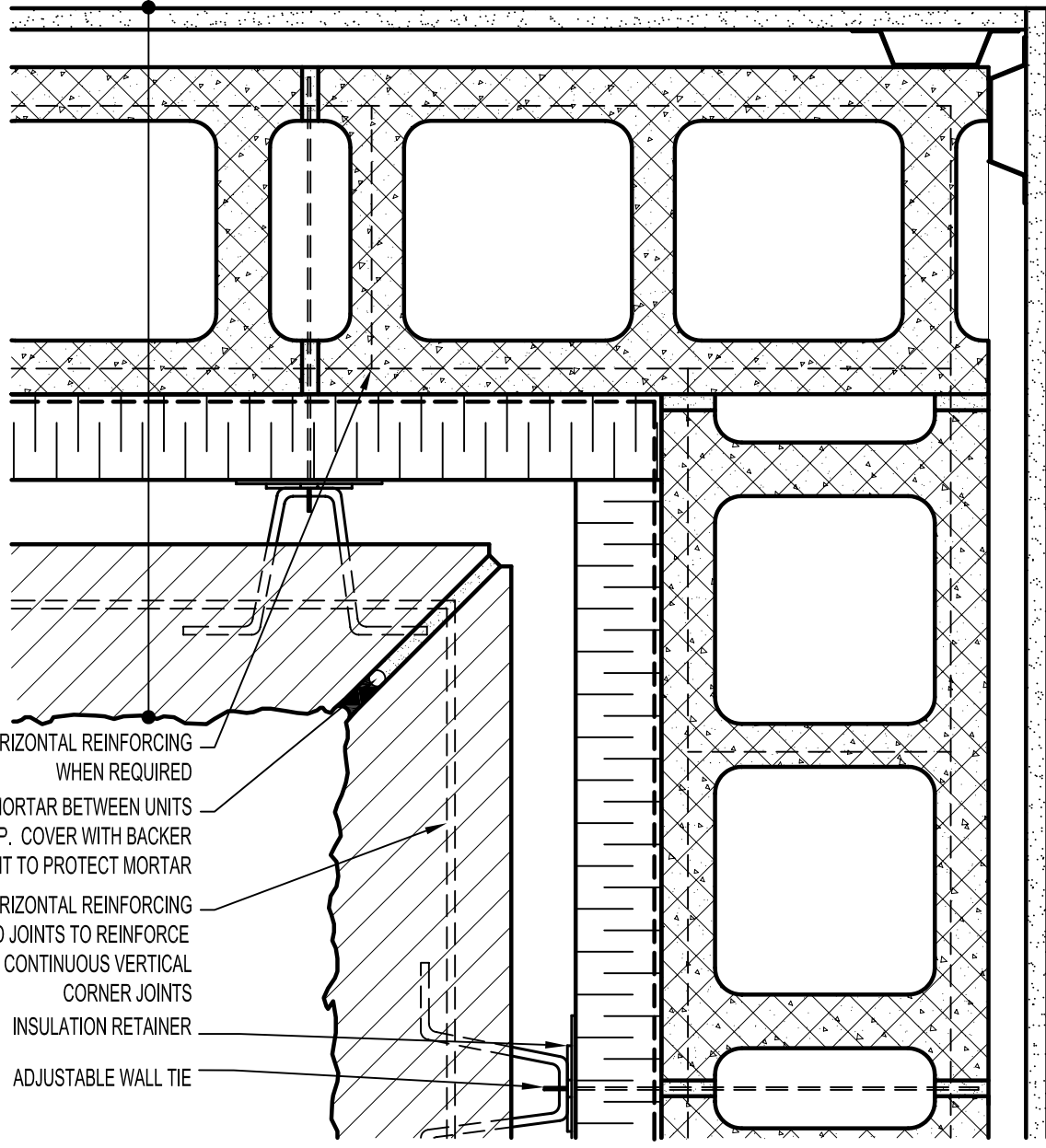


GYPSUM WALLBOARD,
 METAL FURRING (OPTIONAL),
 CONCRETE MASONRY UNIT (CMU),
 AIR/VAPOR BARRIER
 MEMBRANE,
 RIGID OR SEMI-RIGID
 INSULATION (THICKNESS
 DEPENDANT ON REQUIRED
 R-VALUE),
 MIN. 1" AIR SPACE,
 CALCIUM SILICATE BUILDING STONE.



HORIZONTAL REINFORCING
 WHEN REQUIRED

RAKE BACK MORTAR BETWEEN UNITS
 APPROX. 1" DEEP. COVER WITH BACKER
 ROD AND SEALANT TO PROTECT MORTAR

HORIZONTAL REINFORCING
 IN BED JOINTS TO REINFORCE
 CONTINUOUS VERTICAL
 CORNER JOINTS

INSULATION RETAINER

ADJUSTABLE WALL TIE



ARRISCRAFT
 INTERNATIONAL
 BUILDING STONE • BRICK • LIMESTONE

ARRISCRAFT • CADD

TITLE:
 INSIDE MITERED CORNER

DATE DRAWN:
 08/30/04

SCALE:
 3"=1'-0"

DRAWN BY:
 LPS

DETAIL No:

CB CD3I

U151