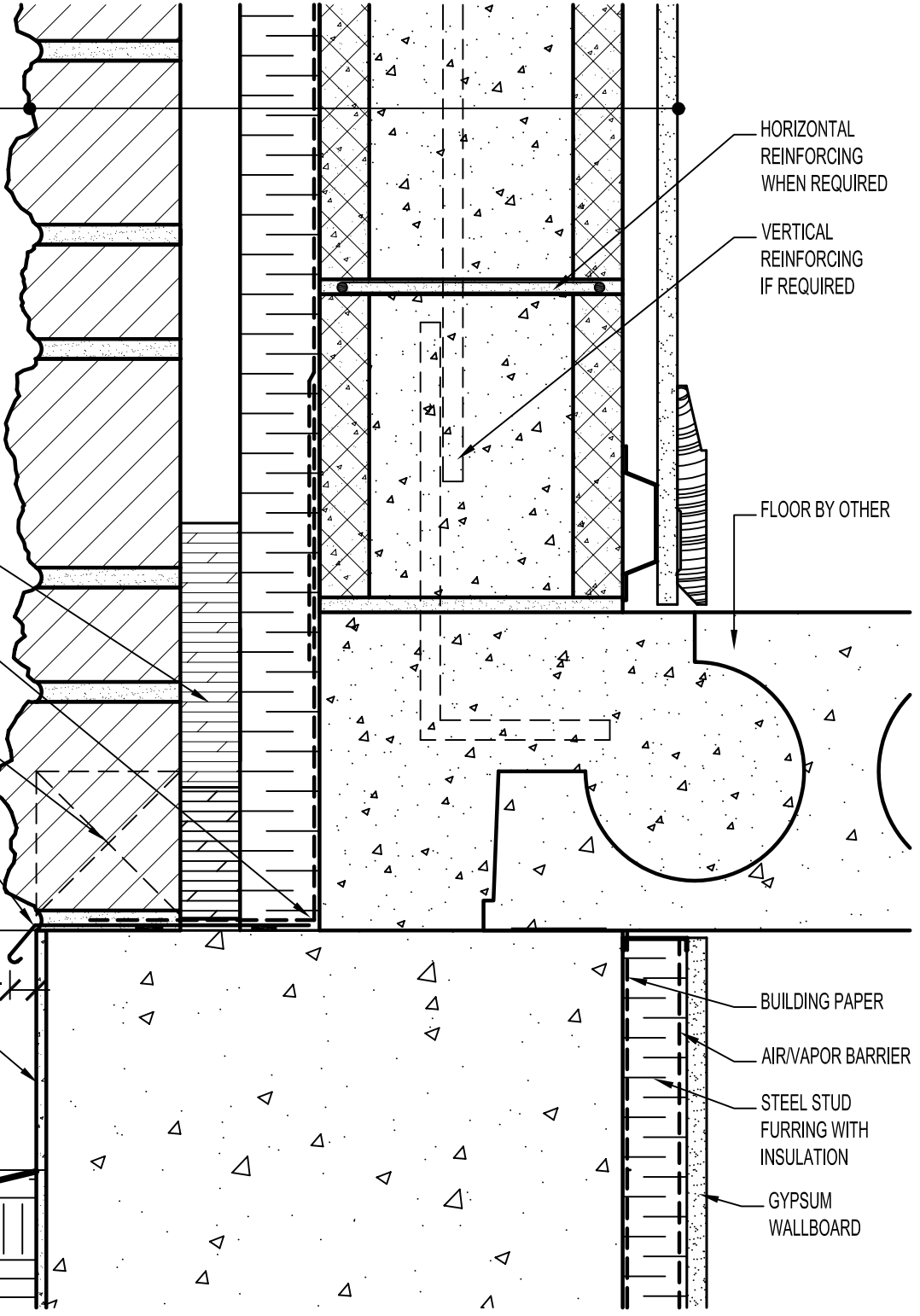


CALCIUM SILICATE
BUILDING STONE,
MIN. 1" AIR SPACE,
RIGID OR SEMI-RIGID
INSULATION (THICKNESS
DEPENDANT ON REQUIRED
R-VALUE),
AIR/VAPOR BARRIER
MEMBRANE,
CONCRETE MASONRY UNIT (CMU),
METAL FURRING (OPTIONAL),
GYPSUM WALLBOARD.



HORIZONTAL
REINFORCING
WHEN REQUIRED

VERTICAL
REINFORCING
IF REQUIRED

FLOOR BY OTHER

MORTAR DROP
CONTROL

FLASHING MEMBRANE
SURFACE ADHERE
TO SUBSTRATE

UNOBSTRUCTED
WEEP SYSTEM
@ 24" O/C

PREFINISHED METAL
DRIP EDGE SET ON
TWO BEADS OF SEALANT

BUILDING PAPER

AIR/VAPOR BARRIER

STEEL STUD
FURRING WITH
INSULATION

GYPSUM
WALLBOARD

6" MIN.
3/8 MIN.
PARKING



ARRISCRAFT
INTERNATIONAL
BUILDING STONE • BRICK • LIMESTONE

ARRISCRAFT • CADD

TITLE:
ALTERNATIVE FOUNDATION TO WALL
JUNCTION WITH SOIL

DATE DRAWN:
08/30/04

SCALE:
3"=1'-0"

DRAWN BY:
LPS

DETAIL No:
CB CD3I

U002