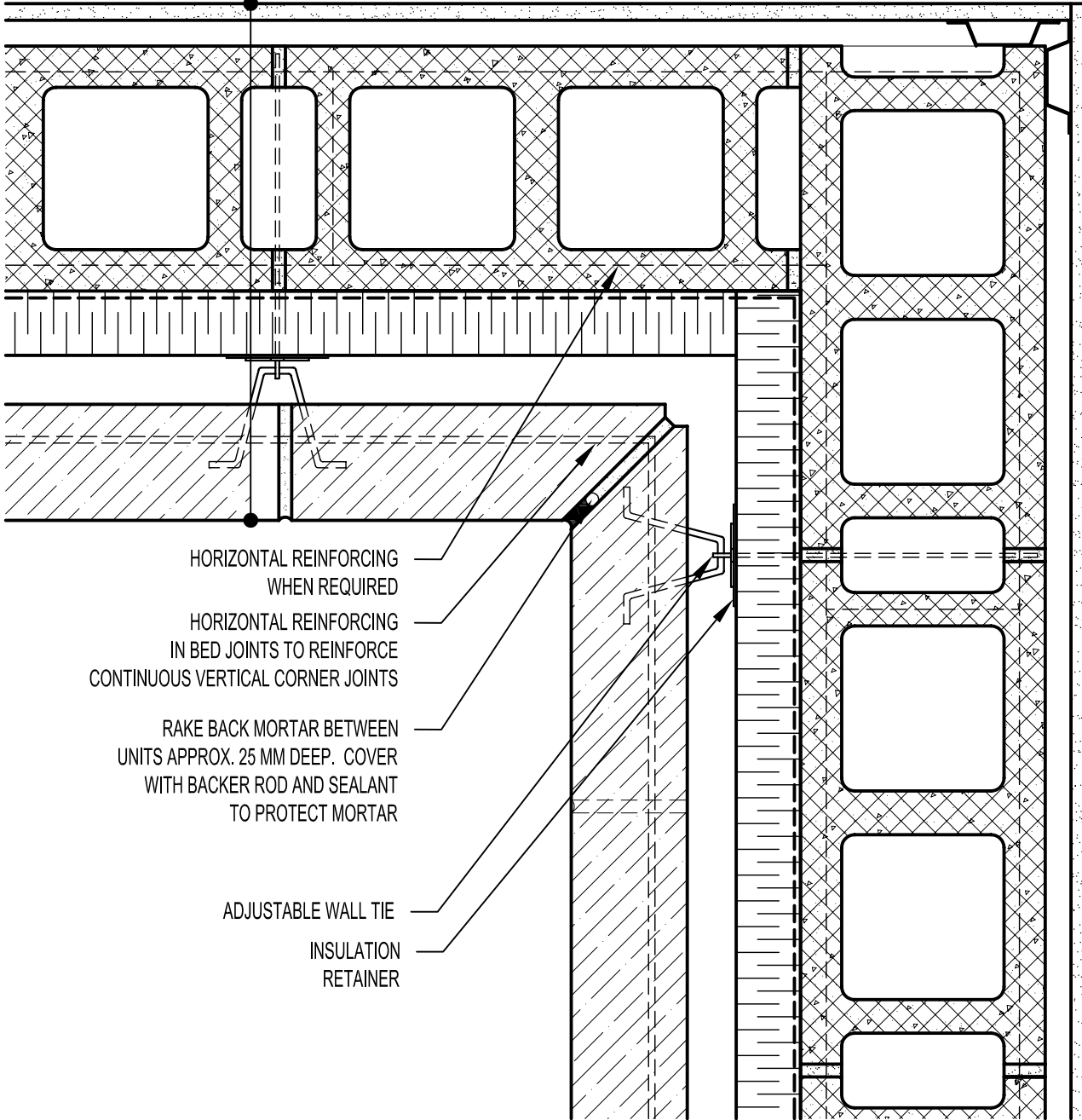


GYPSUM WALLBOARD,  
 METAL FURRING (OPTIONAL),  
 CONCRETE MASONRY UNIT (CMU),  
 AIR/VAPOUR BARRIER  
 MEMBRANE,  
 RIGID OR SEMI-RIGID INSULATION  
 (THICKNESS DEPENDANT  
 ON REQUIRED R-VALUE),  
 MIN. 25 MM AIR SPACE,  
 ADAIR® LIMESTONE MASONRY UNIT.



HORIZONTAL REINFORCING  
 WHEN REQUIRED

HORIZONTAL REINFORCING  
 IN BED JOINTS TO REINFORCE  
 CONTINUOUS VERTICAL CORNER JOINTS

RAKE BACK MORTAR BETWEEN  
 UNITS APPROX. 25 MM DEEP. COVER  
 WITH BACKER ROD AND SEALANT  
 TO PROTECT MORTAR

ADJUSTABLE WALL TIE

INSULATION  
 RETAINER



**ARRISCRAFT**  
 INTERNATIONAL  
 BUILDING STONE • BRICK • LIMESTONE

**ARRISCRAFT • CADD**

TITLE:

INSIDE MITRED CORNER

DATE DRAWN:  
 08/30/04

SCALE:  
 1:5

DRAWN BY:  
 LPS

DETAIL No:

CB AD09S

**D151**