

ADJUSTABLE WALL TIE

INSULATION
RETAINER

GYPSUM WALLBOARD,
METAL FURRING
CHANNEL (OPTIONAL),
CONCRETE MASONRY
UNIT (CMU),
AIR/VAPOUR BARRIER
MEMBRANE,
RIGID OR SEMI-RIGID
INSULATION (THICKNESS
DEPENDANT ON REQUIRED
R-VALUE),
MIN. 25 MM AIR SPACE,
ADAIR® LIMESTONE
MASONRY UNIT.

D/3
(MAX. TOTAL)

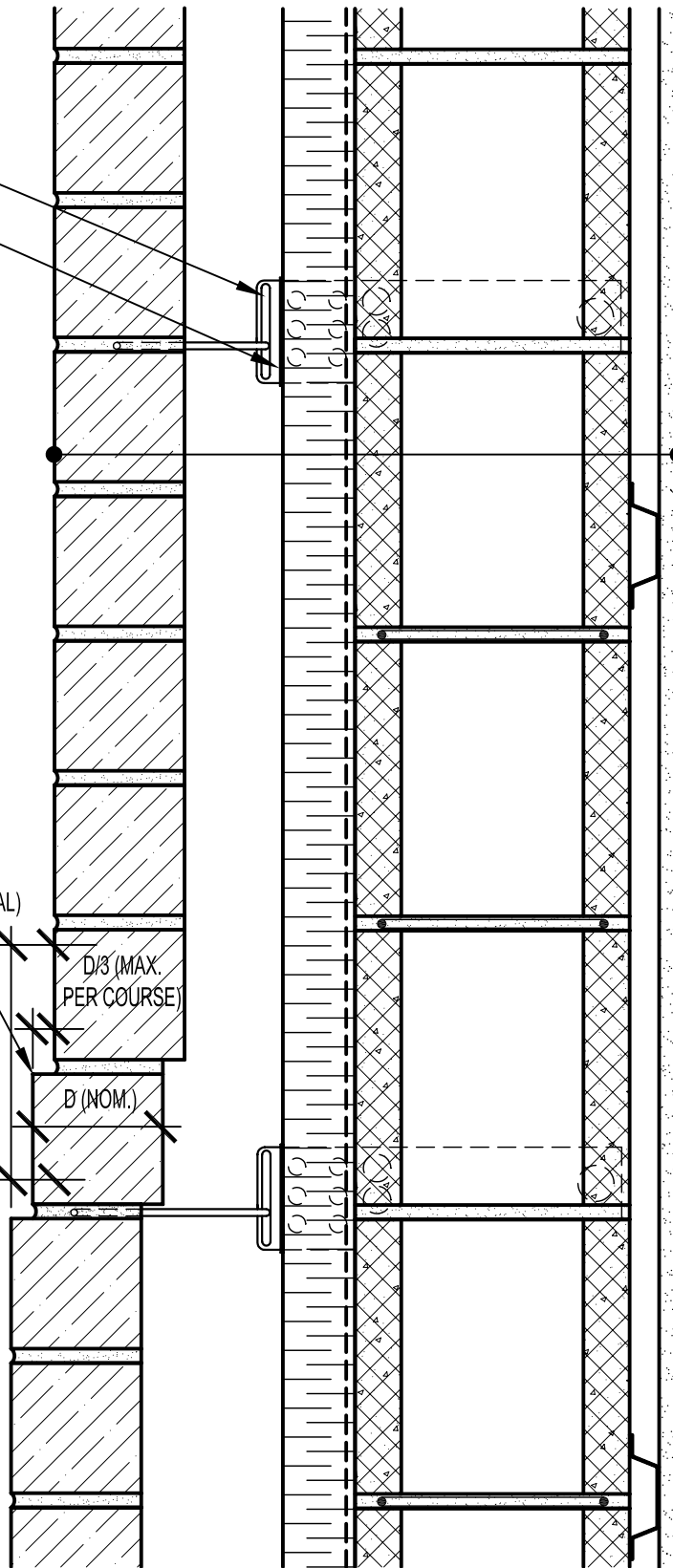
CHAMFER RECOMMENDED
FOR RECESSED UNITS
GREATER THAN 19 MM

D/3 (MAX.
PER COURSE)

D (NOM.)

D/3 (MAX.
PER COURSE)

NOTE: RECESS LIMITATIONS
SET BY THE MASONRY
CONSTRUCTION FOR
BUILDING STANDARD
CSA A371 WITHIN CANADA



ARRISCRAFT
INTERNATIONAL
BUILDING STONE • BRICK • LIMESTONE

ARRISCRAFT • CADD

TITLE:

RECESSED
(CROBELLING REVERSED)

DATE DRAWN:
08/30/04

SCALE:
1:5

DRAWN BY:
LPS

DETAIL No:
CB AD09S

D111