

ADAIR® LIMESTONE
MASONRY UNIT,
MIN. 25 MM AIR SPACE,
RIGID OR SEMI-RIGID INSULATION
(THICKNESS DEPENDANT ON
REQUIRED R-VALUE),
AIR/VAPOUR BARRIER
MEMBRANE,
CONCRETE MASONRY UNIT (CMU),
METAL FURRING (OPTIONAL),
GYPSUM WALLBOARD.

FLASHING MEMBRANE
SURFACE ADHERE
TO SUBSTRATE

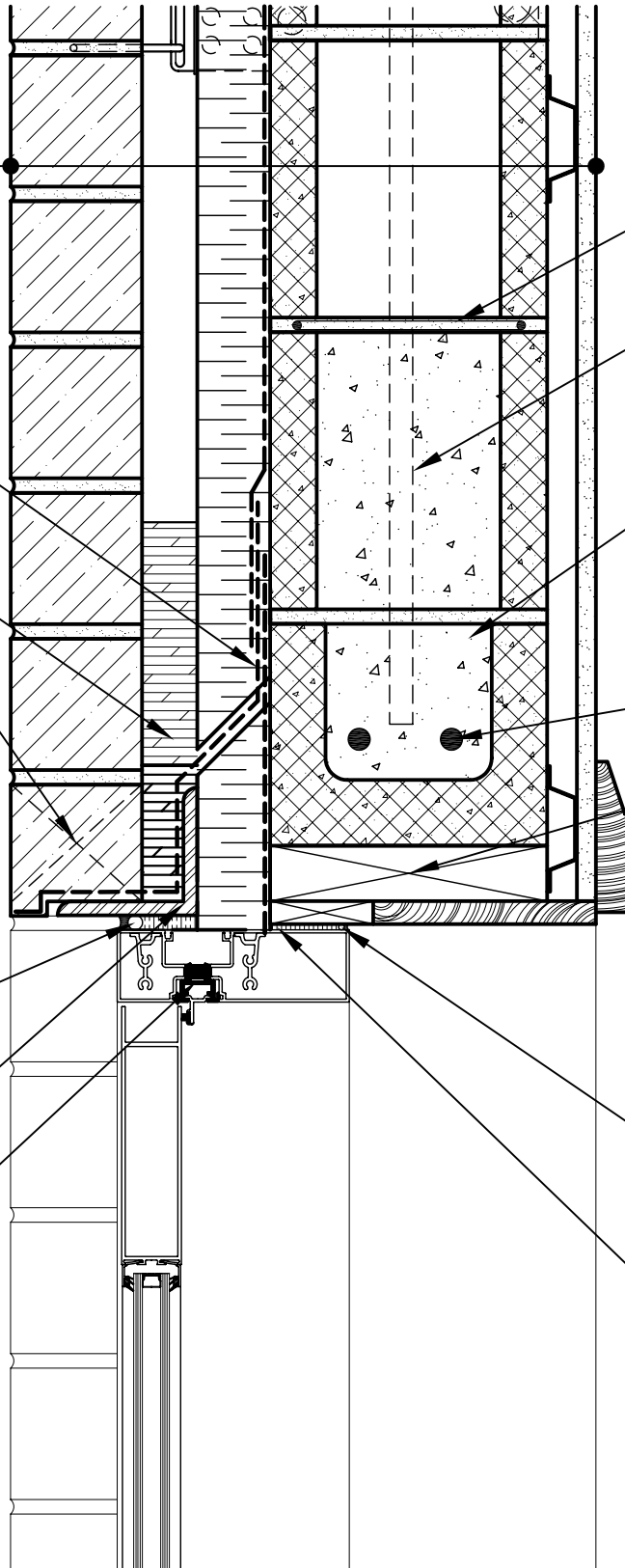
MORTAR DROP
CONTROL

UNOBSTRUCTED
WEEP SYSTEM
@ 600 MM O/C

COMPRESSIBLE BACKER ROD
AND SEALANT

CORROSION PROTECTED
STEEL ANGLE LINTEL

PREMANUFACTURED
THERMALLY BROKEN
ALUMINUM DOOR ASSEMBLY



HORIZONTAL
REINFORCING
WHEN REQUIRED

VERTICAL
REINFORCING
IF REQUIRED

CUT CONCRETE BOND
BEAM TO HEIGHT AND
INCLUDE SOAP UNITS
AT ENDS TO MAINTAIN
COURSING OF CMU

STEEL REBAR
REINFORCING

WOOD BLOCKING

COMPRESSIBLE BACKER
ROD AND SEALANT ALL
AROUND THE FRAME

SPRAY APPLIED FOAM
INSULATING AIR SEAL
ALL AROUND FRAME



ARRISCRAFT
INTERNATIONAL
BUILDING STONE • BRICK • LIMESTONE

ARRISCRAFT • CADD

TITLE:

ALTERNATIVE ALUMINUM
DOOR HEAD

DATE DRAWN:

08/30/04

SCALE:

1:5

DRAWN BY:

LPS

DETAIL No:

CB AD09S

D062