

ADAIR® LIMESTONE
MASONRY UNIT,
MIN. 25 MM AIR SPACE,
RIGID OR SEMI-RIGID INSULATION
(THICKNESS DEPENDANT ON
REQUIRED R-VALUE),
AIR/VAPOUR BARRIER
MEMBRANE,
CONCRETE MASONRY UNIT (CMU),
METAL FURRING (OPTIONAL),
GYPSUM WALLBOARD.

FLASHING MEMBRANE
SURFACE ADHERE
TO SUBSTRATE

MORTAR DROP
CONTROL

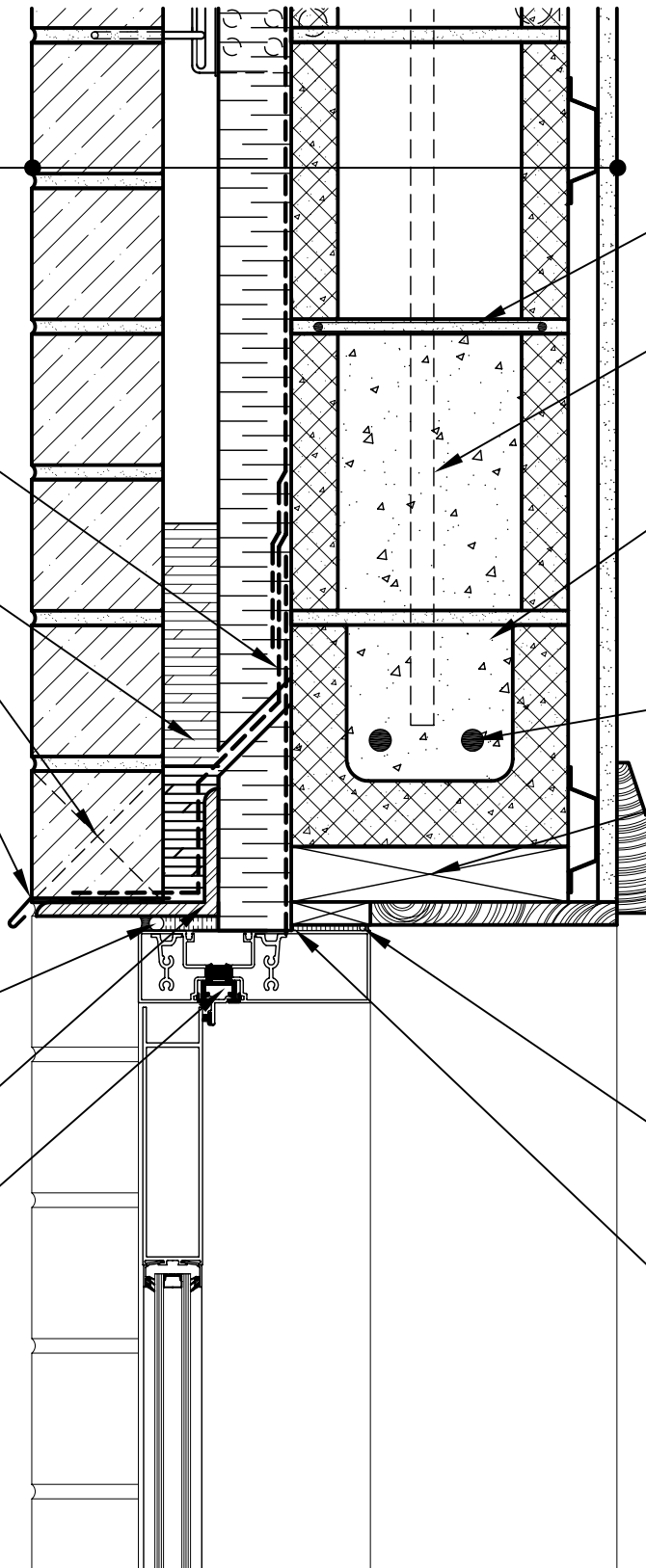
UNOBSTRUCTED
WEEP SYSTEM
@ 600 MM O/C

PREFINISHED
METAL DRIP EDGE
SET ON TWO
BEADS OF SEALANT

COMPRESSIBLE BACKER ROD
AND SEALANT

CORROSION PROTECTED
STEEL ANGLE LINTEL

PREMANUFACTURED
THERMALLY BROKEN
ALUMINUM DOOR ASSEMBLY



HORIZONTAL
REINFORCING
WHEN REQUIRED

VERTICAL
REINFORCING
IF REQUIRED

CUT CONCRETE BOND
BEAM TO HEIGHT AND
INCLUDE SOAP UNITS
AT END OF BOND BEAM
TO MAINTAIN COURSING
OF CMU

STEEL REBAR
REINFORCING

WOOD BLOCKING

COMPRESSIBLE
BACKER ROD AND SEALANT
ALL AROUND THE FRAME

SPRAY APPLIED FOAM
INSULATING AIR SEAL
ALL AROUND FRAME



ARRISCRAFT
INTERNATIONAL
BUILDING STONE • BRICK • LIMESTONE

ARRISCRAFT • CADD

TITLE:

ALUMINUM DOOR
HEAD

DATE DRAWN:
08/30/04

SCALE:
1:5

DRAWN BY:
LPS

DETAIL No:

CB AD09S

D060