

ADAIR® LIMESTONE  
MASONRY UNIT,  
MIN. 1" AIR SPACE,  
RIGID OR SEMI-RIGID  
INSULATION (THICKNESS  
DEPENDANT ON REQUIRED  
R-VALUE),  
AIR/VAPOR BARRIER  
MEMBRANE,  
CONCRETE  
MASONRY UNIT (CMU),  
METAL FURRING (OPTIONAL),  
GYPSUM WALLBOARD.

FLASHING MEMBRANE  
SURFACE ADHERE  
TO SUBSTRATE

MORTAR DROP  
CONTROL

UNOBSTRUCTED  
WEEP SYSTEM  
@ 24" O/C

PREFINISHED  
METAL DRIP EDGE  
SET ON TWO  
BEADS OF SEALANT

CORROSION PROTECTED  
STEEL ANGLE LINTEL

COMPRESSIBLE BACKER  
ROD AND SEALANT

PREMANUFACTURED  
THERMALLY BROKEN  
ALUMUNIM DOOR ASSEMBLY

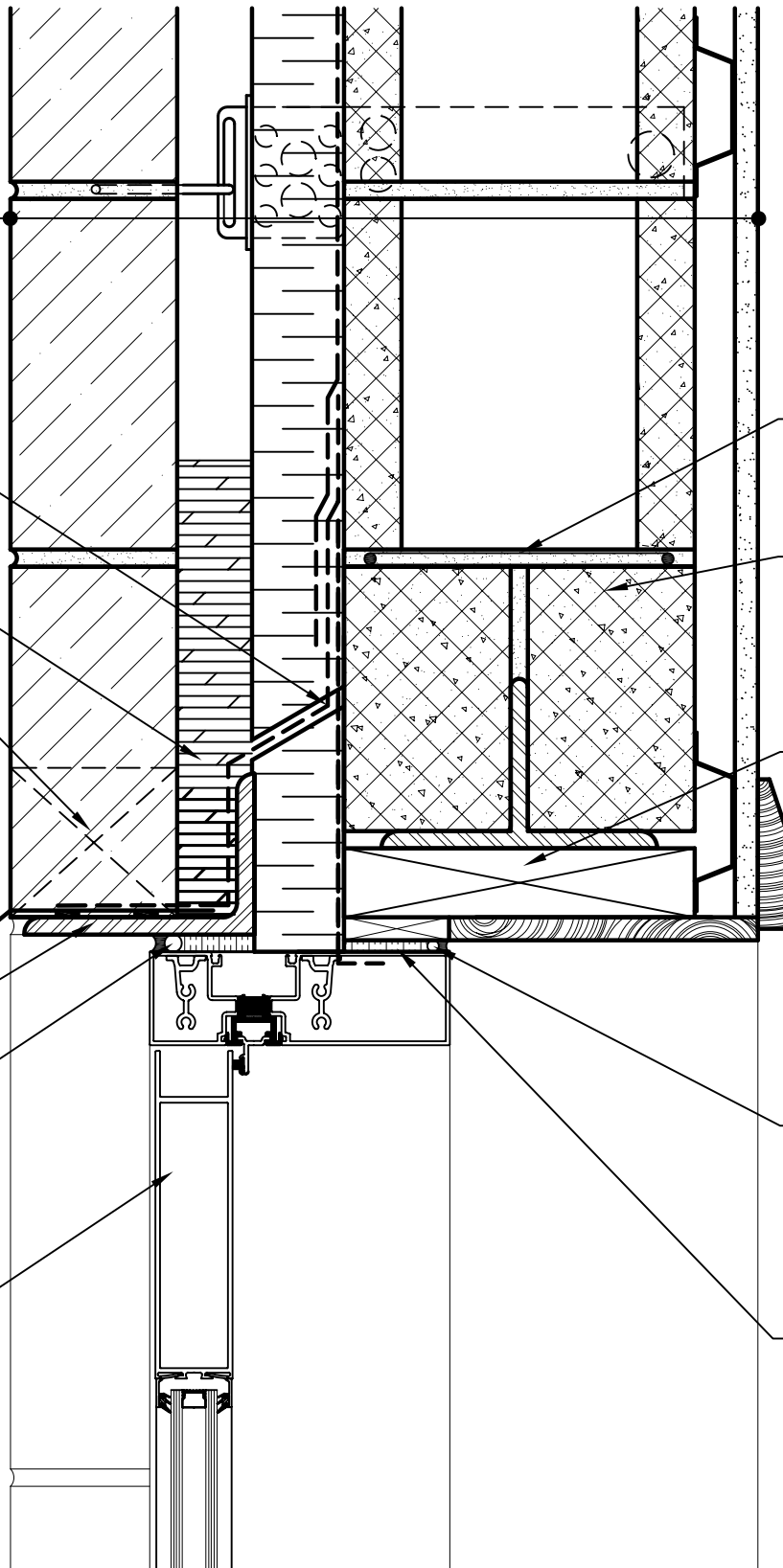
HORIZONTAL  
REINFORCING  
WHEN REQUIRED

CUT SOLID MASONRY  
UNIT TO HEIGHT AND  
INCLUDE SOAP UNITS AT  
ENDS MAINTAIN  
COURSING OF CMU

WOOD BLOCKING

COMPRESSIBLE  
BACKER ROD AND  
SEALANT ALL  
AROUND THE FRAME

SPRAY APPLIED FOAM  
INSULATING AIR SEAL  
ALL AROUND FRAME



**ARRISCRAFT**  
INTERNATIONAL  
BUILDING STONE • BRICK • LIMESTONE

**ARRISCRAFT • CADD**

TITLE:

ALUMINUM DOOR  
HEAD

DATE DRAWN:  
08/30/04

SCALE:  
3"=1'-0"

DRAWN BY:  
LPS

DETAIL No:

CB AD08S

**U061**