

INSULATION
RETAINER

ADJUSTABLE
WALL TIE

GYPSUM WALLBOARD,
METAL FURRING
(OPTIONAL),
CONCRETE MASONRY
UNIT (CMU),
AIR/VAPOR BARRIER
MEMBRANE,
RIGID OR SEMI-RIGID
INSULATION (THICKNESS
DEPENDANT ON
REQUIRED R-VALUE),
MIN. 1" AIR SPACE,
ADAIR® LIMESTONE
MASONRY UNIT.

D/2 (MAX.
TOTAL)

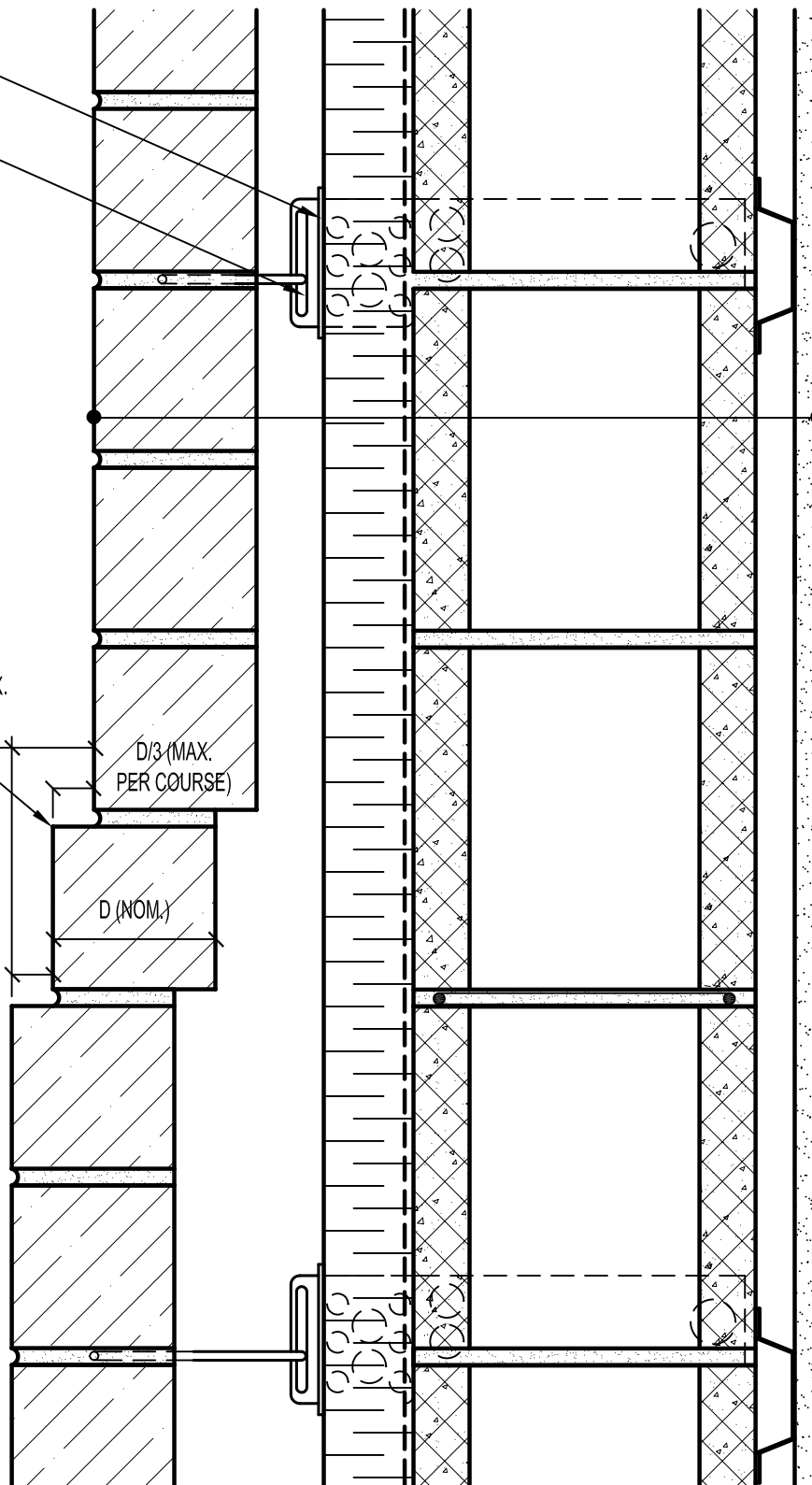
CHAMFER RECOMMENDED
FOR UNITS RECESSED
GREATER THAN 3/4"

D/3 (MAX.
PER COURSE)

D/3 (MAX.
PER COURSE)

D (NOM.)

NOTE: RECESS LIMITATIONS
SET BY BUILDING CODE
REQUIREMENTS FOR
MASONRY STRUCTURES,
ACI 530/ASCE 5/TMS 402,
WITHIN THE UNITED STATES



ARRISCRAFT
INTERNATIONAL
BUILDING STONE • BRICK • LIMESTONE

ARRISCRAFT • CADD

TITLE: **RECESSED
(CORBELLING REVERSED)**

DATE DRAWN:
08/30/04

SCALE:
3"=1'-0"

DRAWN BY:
LPS

DETAIL No:
CB AD04S

U111