



Project Focus

ARRIS-clip Case Study: Virtua Health & Wellness Center

The Particulars:

HGA Architects in Milwaukee, WI designed the stunning Virtua Healthcare facility in Washington Township, NJ, and used ARRIS-clip Renaissance® units as an integral part of the exterior façade so that they could achieve their design vision.

Due to the deep stone soffits and the large spans between columns there were few options available to support a traditional 4" thick unit masonry veneer façade. This left only one option for the designers - Curtain Wall Construction. This led to 34,000 sq. ft. of ARRIS-clip Renaissance® Units being specified. The use of the lighter ARRIS-clip units allowed for lighter structure resulting in significant cost savings and greater design flexibility.

The Project Highlights:

- 34,000 sq. ft. of ARRIS-clip Renaissance® units Smooth finish. Custom color.
- The first of four Virtua facility buildings on three separate campuses with 180,000 sq. ft. of ARRIS-clip Renaissance® units being specified.
- Joints were finished with backer-rod and silicone sealant.
- Return Corner Units were utilized at the corners of the building.
- The suspended stone soffits were critical to the design intent so that stone appeared to be "floating" over the store front windows below.
- Since the joints were not mortared, the use of the ARRIS-clip Renaissance® Units allowed for winter construction with no tarps and salamanders required to cover and heat the wall.

Project: Virtua Health and Wellness Center,
Washington Township, NJ

Architect: HGA Architects, Milwaukee, WI

Product: ARRIS-clip Renaissance® Units, Custom Color



800.265.8123 | arriscraft.com

 **Arriscraft**
Building Stone · Brick · Limestone

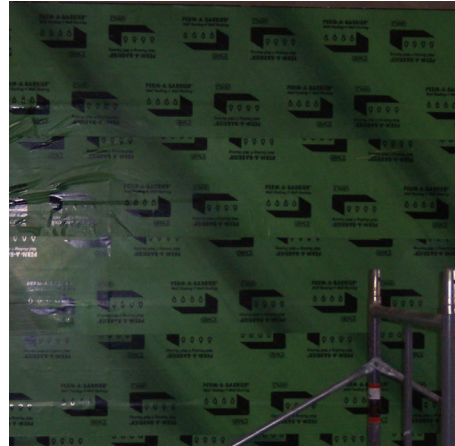
ARRIS-clip Case Study: Virtua Health & Wellness Center



Step 1: Steel Studs



Step 2: Exterior Grade Sheathing



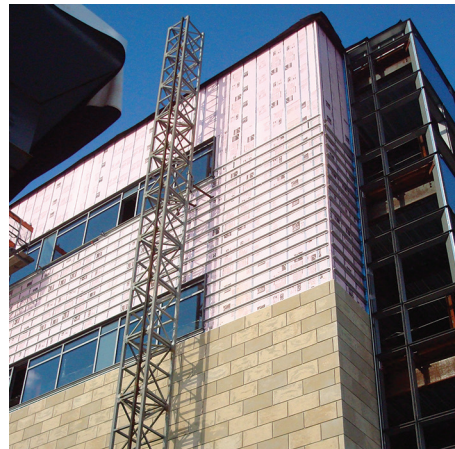
Step 3: Waterproofing Membrane



Step 4: Install "Z" channels and then Rigid Insulation between "Z" channels



Step 5: Install Gridworx Channels over "Z" channels and rigid insulation



Step 6: Clip Stone on to the Gridworx Channels



Step 7: Joints Sealed with Backer Rod and Silicone Sealant

