

# Project Focus

## ARRIS-tile Case Study: Montecito Office Building

### The Particulars:

SEM Architects in Denver, CO designed the striking Montecito Office Building in Las Vegas, NV. Utilizing Renaissance® units as an integral part of the exterior façade to achieve their design vision. According to Todd Decker at SEM Architects they wanted to maintain a uniform finish plane for the skin with a rich pedestrian scaled finish at the base transitioning to a more monolithic finish above. This was achieved by combining thin-set adhered ARRIS-tile with synthetic stucco. By using ARRIS-tile along the other components the detailing of stud placement, sheathing, weather barriers, openings, etc. remained consistent throughout the wall assembly making construction and detailing simple.

With many options within the ARRIS-tile product line including colors, textures, and profile units SEM Architects appreciated the design versatility and flexibility that this product gave them.

### The Project Highlights:

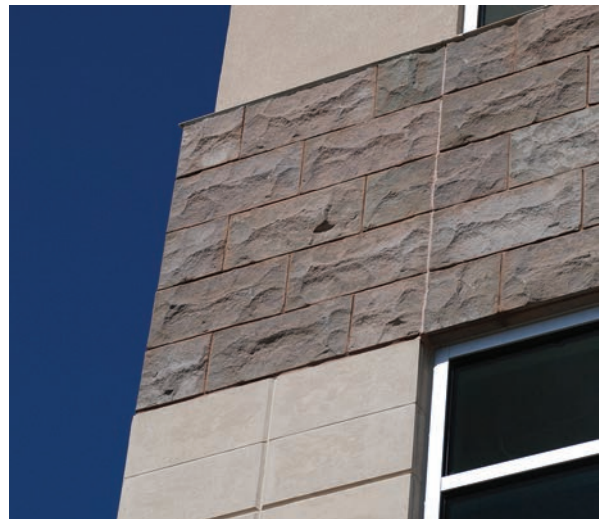
15,000 sq. ft. of ARRIS-tile Renaissance® units in Ginger and a custom color in both smooth and rocked textures.

While originally envisioned with travertine and granite cladding, with budget concerns a more economical alternate material was required. This led to the selection of ARRIS-tile. By using two colors, ARRIS-tile maintained the original color scheme while bringing the cladding back within budget.

Chamfered smooth ARRIS-tile units were used to create the appearance of the larger travertine panels. Once again this option effectively managed costs on the project.

The ARRIS-tile was simply adhered to the waterproofed substrate with a thin-set latex modified adhesive similar to the installation process used for ceramic, porcelain or natural stone tiles.

Project: Montecito Office Building, Las Vegas, NV  
Architect: SEM Architects, Denver, CO  
Product: Ginger Smooth ARRIS-tile and Custom Color  
Rocked ARRIS-tile Renaissance® Units



# ARRIS-tile Case Study: Montecito Office Building



According to Todd Decker with SEM, the overall design of the Montecito Office Building reflects upon traditional design principles using a base, middle and top. These traditional principles are contrasted by a modern more contemporary aesthetic. The base is accented with large, two-story windows and stone pilasters while the middle portion of the building uses a variety of horizontal window patterns. The upper portion of the building incorporates intricately detailed metal panels along with integral sun shade devices at the entry feature to create an iconic image on the skyline. The design focused on emphasizing the plan articulation and fenestration pattern. Therefore a relatively tight skin was in order, and ARRIS-tile was a perfect fit as a result.

