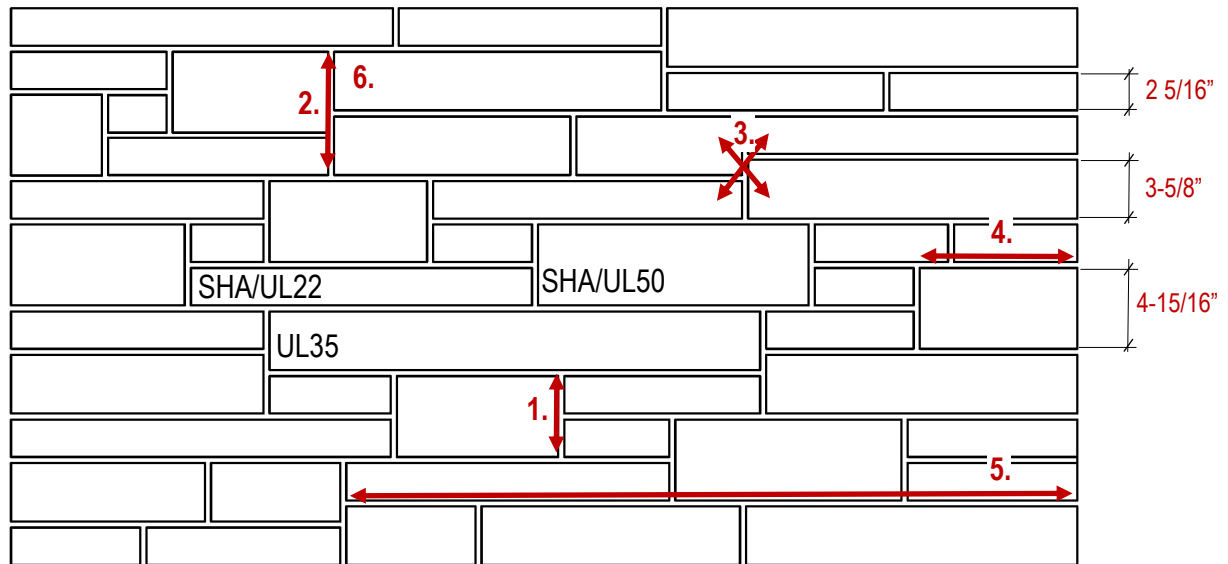


Urban Ledgestone Building Stone

Typical Elevation • 20:50:30 Ashlar Bond • 3/8" Mortar Joints



Guidelines for Installation:

1. Two UL22 units laid on top of each other will bond with one SHA/UL50. To maintain consistency of appearance, mix small and large units.
2. A UL22 and SHA/UL50 combination will bond with two UL35s.
3. UL35 units should form a staggered bonding line by crossing with UL22s.
4. Maintain a minimum 4" lap between vertical joints.
5. Maintain a maximum 5—7 foot horizontal joint length.
6. Maximum vertical joint is the height of the tallest unit.
7. To maintain the standard ratio of sizes in the wall, SHA/UL50 units should be placed approximately 1—1.5' apart. SHA/UL50 units should not touch each other.

Avoid:

1. Stepping or stringing together more than 2-3 units of the same height.
2. Creating box patterns in the wall.
3. Stack Bonding.

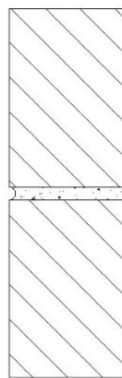
Size	Pieces* per	Nominal Length
SHA/UL22	14	24"
UL35	18	32"
SHA/UL50	8	32"

*One piece is based on a 23-5/8" length and may be comprised of 2 or more individual stones. UL35 and SHA/UL50 pieces are based on a 31-5/8" length.

General Installation Guidelines

- Arriscraft recommends the use of a Portland cement-lime mortar, proportioned to a 1:1:6 ratio.
- Masonry units should be laid with full head and bed joints except where they are used for weep holes or ventilation.
- Bevel mortar from rear face to prevent protrusion into cavity.
- Prevent excessive mortar droppings by cutting off excess mortar with trowel as the units are laid.
- Butter head joints of unit being placed in wall.
- Place unit to tightly compress mortar.
- Do not re-adjust unit once it has been set in place.
- Tool joints when mortar is thumbprint hard. This timing will depend on the mortar properties and weather conditions.
- Tool joints to a tightly compressed surface to achieve the most weather resistance. Concave tooled joints provide the best resistance to moisture penetration.
- After tooling, any excess mortar and dust should be brushed from the masonry surface using a soft bristle brush. Avoid rubbing or pressing the mortar into the units.
- Refer to additional guidelines on the BASIC CARE sheet.

Joint Profile:



Concave



Recessed

August 2019