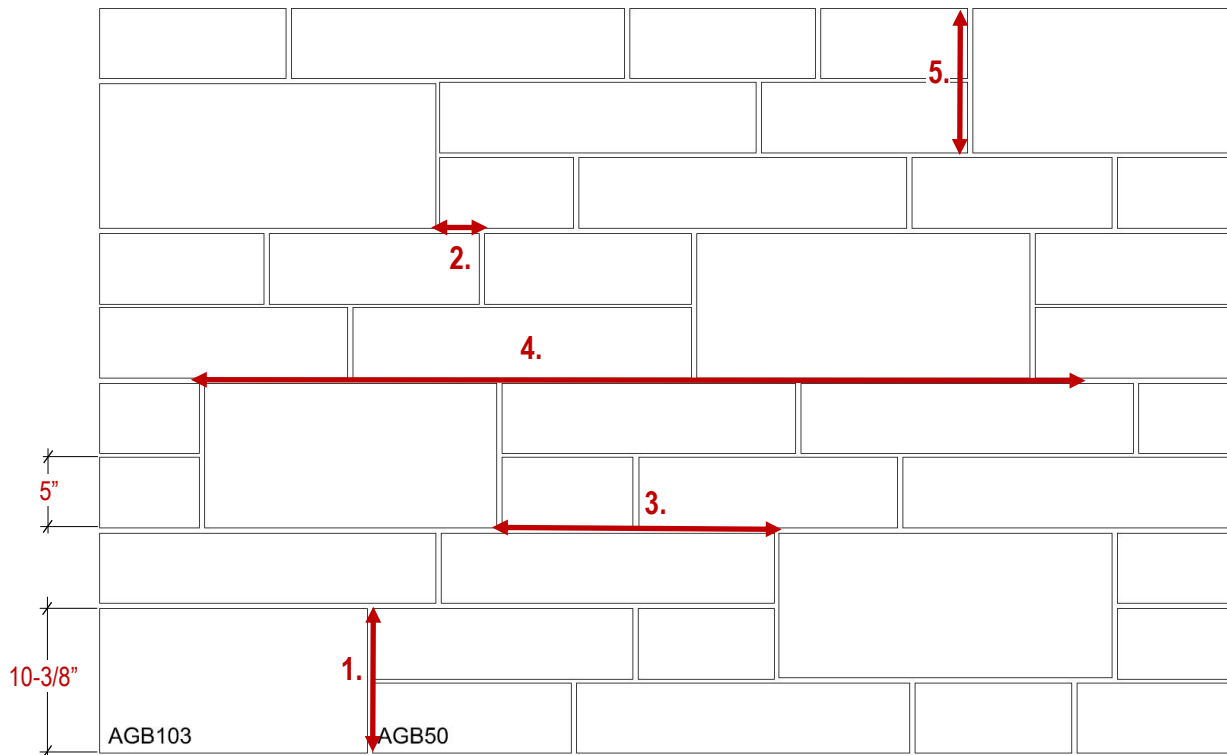


2-Unit Adair® Georgian Blend

Typical Elevation • 75:25 Bond • 3/8" Mortar Joints



Guidelines for Installation:

1. Two AGB50 units laid on top of each other will bond with an ABG103 unit.
2. Maintain a minimum 4" between vertical joints.
3. ABG103 units must not touch one another. To maintain the standard ratio of sizes in the wall, ABG103 units should be placed approximately 1-1/2 feet apart.
4. Maintain a 5-6 foot horizontal joint length depending on the wall dimensions.
5. Maximum vertical joint is the height of the tallest unit.

Avoid:

- Creating box patterns in the wall.

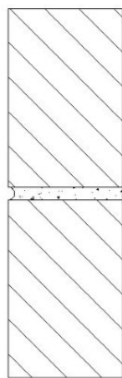
Size	Percent	Pieces per* 32 sq.ft
AGB50	75%	27
AGB103	25%	5

*One piece equals 2 lineal feet and may be comprised of 2 or more pieces.

General Installation Guidelines

- Arriscraft recommends the use of a Portland cement-lime mortar, proportioned to a 1:1:6 ratio.
- Masonry units should be laid with a full head and bed joints except where they are used for weep holes or ventilation.
- Bevel mortar from rear face to prevent protrusion into cavity.
- Prevent excessive mortar droppings by cutting off excess mortar with trowel as the units are laid.
- Butter head joints of unit being placed in wall.
- Place unit to tightly compress mortar.
- Do not re-adjust unit once it has been set in place.
- Tool joints when mortar is thumbprint hard. This timing will depend on the mortar properties and weather conditions.
- Tool joints to a tightly compressed surface to achieve the most weather resistance. Concave tooled joints provide the best resistance to moisture penetration.
- After tooling, any excess mortar and dust should be brushed from the masonry surface using a soft bristle brush. Avoid rubbing or pressing the mortar into the units.
- Refer to additional guidelines on the BASIC CARE sheet.

Optional Joint Profile:



CONCAVE



RECESSED

SEPT 2020