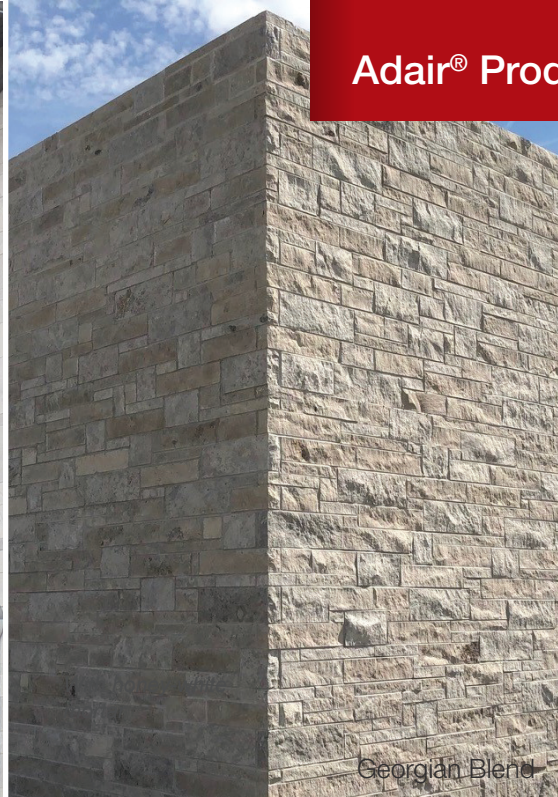
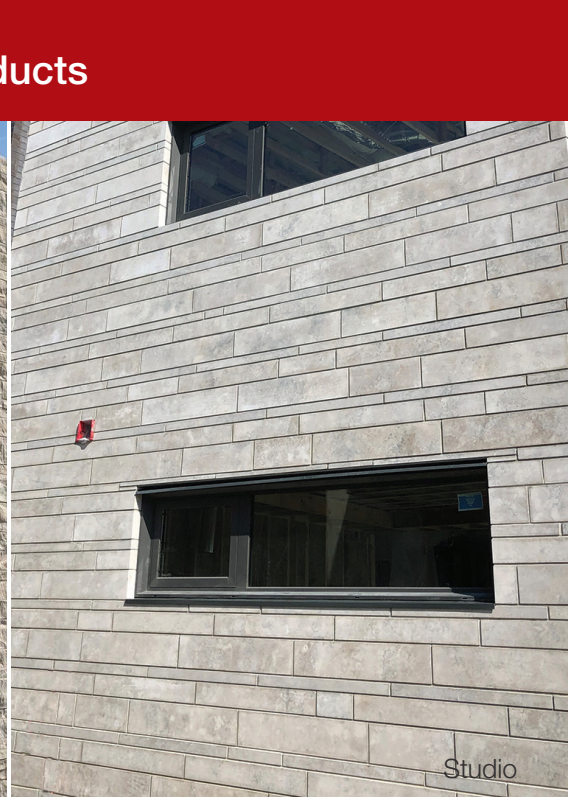


Parliament



Georgian Blend



Studio

Adair® Limestone fits your style

We have been working hard the last couple of years at our Adair® quarry. We now offer three new standard products out of the quarry:

Parliament

Parliament makes a strong statement with its rugged split face finish and natural sepia tone. Parliament is comprised of three face rises (3-5/8", 7-5/8", and 11-5/8"), and offered in random lengths up to 35-5/8". Designers can choose a coursed installation, using one size per course, or a more traditional ashlar pattern. A perfect choice for stately designs meant to last forever.

Georgian Blend

Georgian Blend is a three unit (2-5/16", 5" and 7-5/8") ashlar split face product, offered in a random lengths up to 23-5/8". It is available in a blend of both blue grey and sepia in a 60:40 ratio. This product is perfect for the residential market using a standard ashlar pattern with a blend of colour that highlights the natural stone. Georgian Blend is very competitively priced for custom builds looking for a unique new product.

Studio

Sleek, smooth and sophisticated, Studio is a natural Adair® limestone featuring our new glacial finish. This clean finish reveals the beautiful fleuri pattern in this sepia tone limestone. Available in three face rises (2-1/4", 5", and 7-5/8") at lengths of 35-5/8", Studio is designed for a modern, coursed installation, but can also be laid in a classic ashlar pattern.

Any of the above products can be order in different colour tones or veining on a custom basis.

Pro Tip:

Studio and Georgian Blend share the same face rises. Combine the two products together for a unique blend of textures!